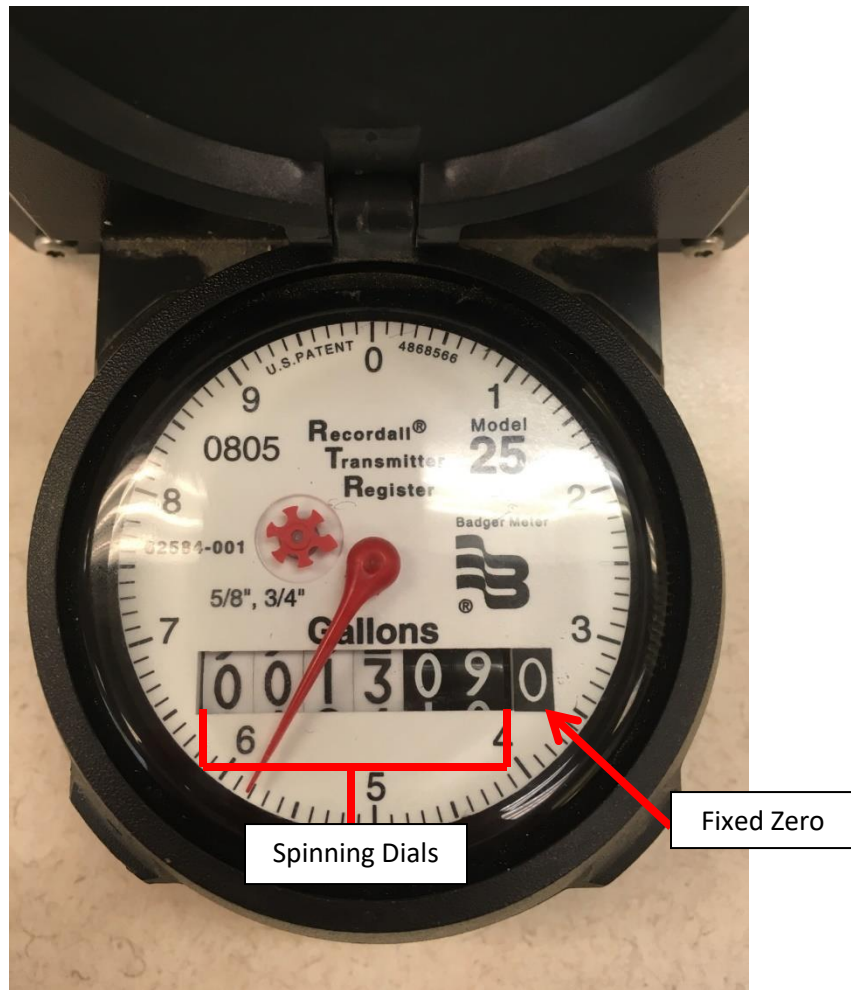


## How to Read Your Non-Digital Meter



Look at the spinning dials on your meter. The above meter would show on your bill as Current Meter Reading "1309." The difference of the two reads on your bill will be multiplied by 10 to account for the fixed zero on the meter.

This means that 13,090 gallons have passed through this meter during its lifetime.

---

To calculate your water volume charge follow the steps below:

$(\text{Current Meter Reading} - \text{Previous Meter Reading}) \times 10 = \text{Billed Usage}$

$\text{Billed Usage} \times \text{Current Rate} = \text{Water Volume Charge}$