



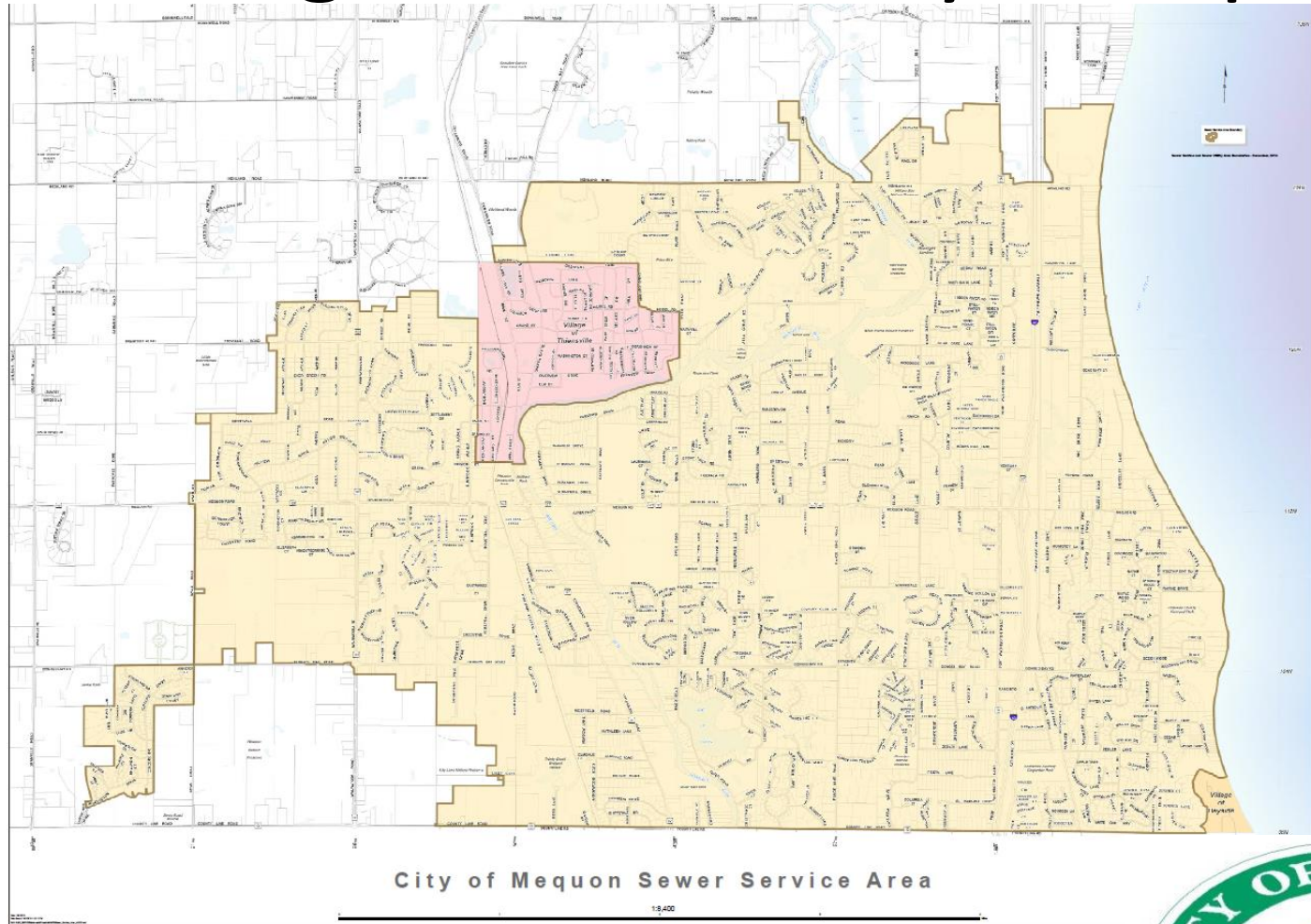
Sanitary Sewer Service Area Amendment

City of Mequon

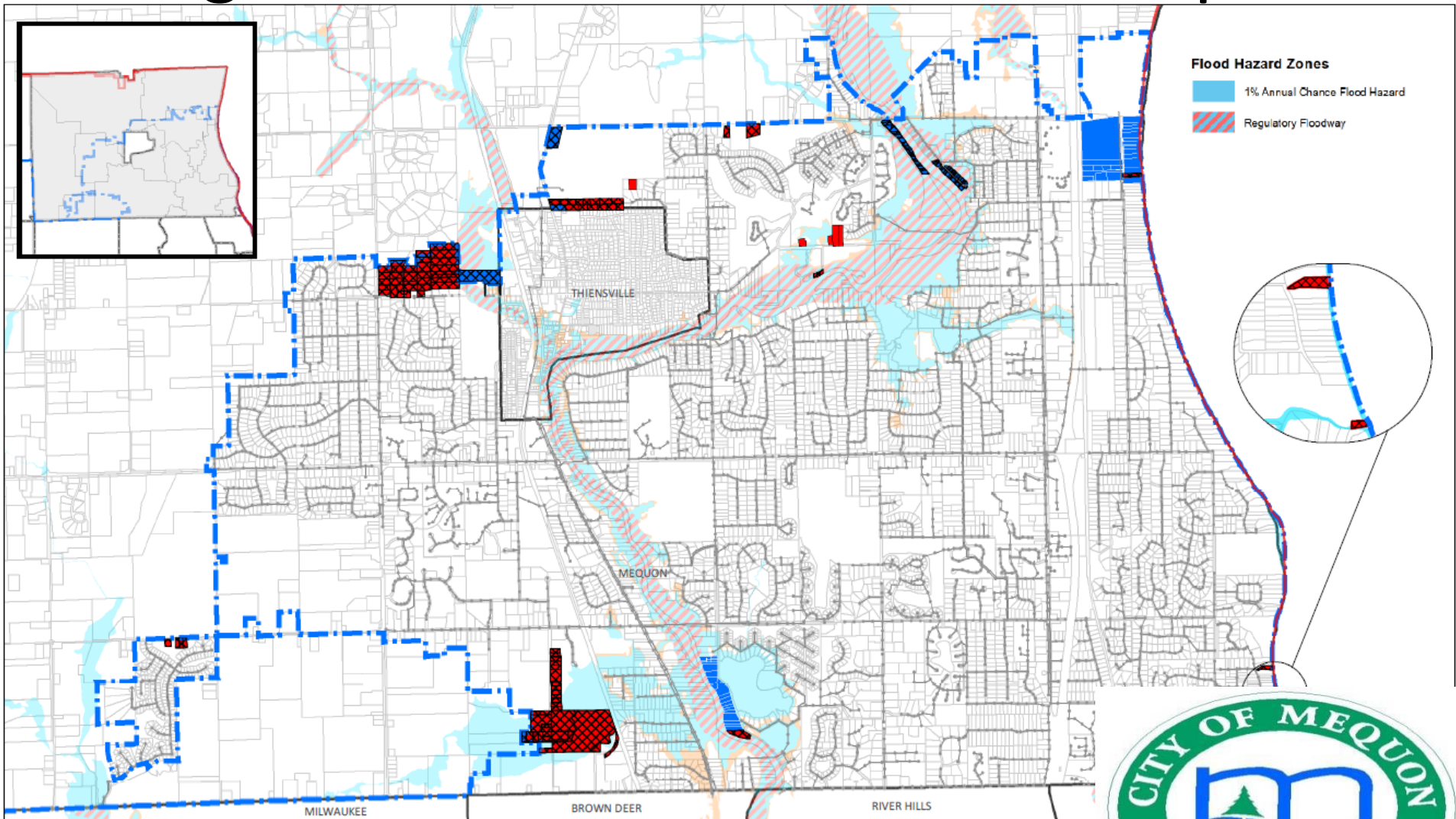
Sewer Utility District Commission

Tuesday, March 19, 2019

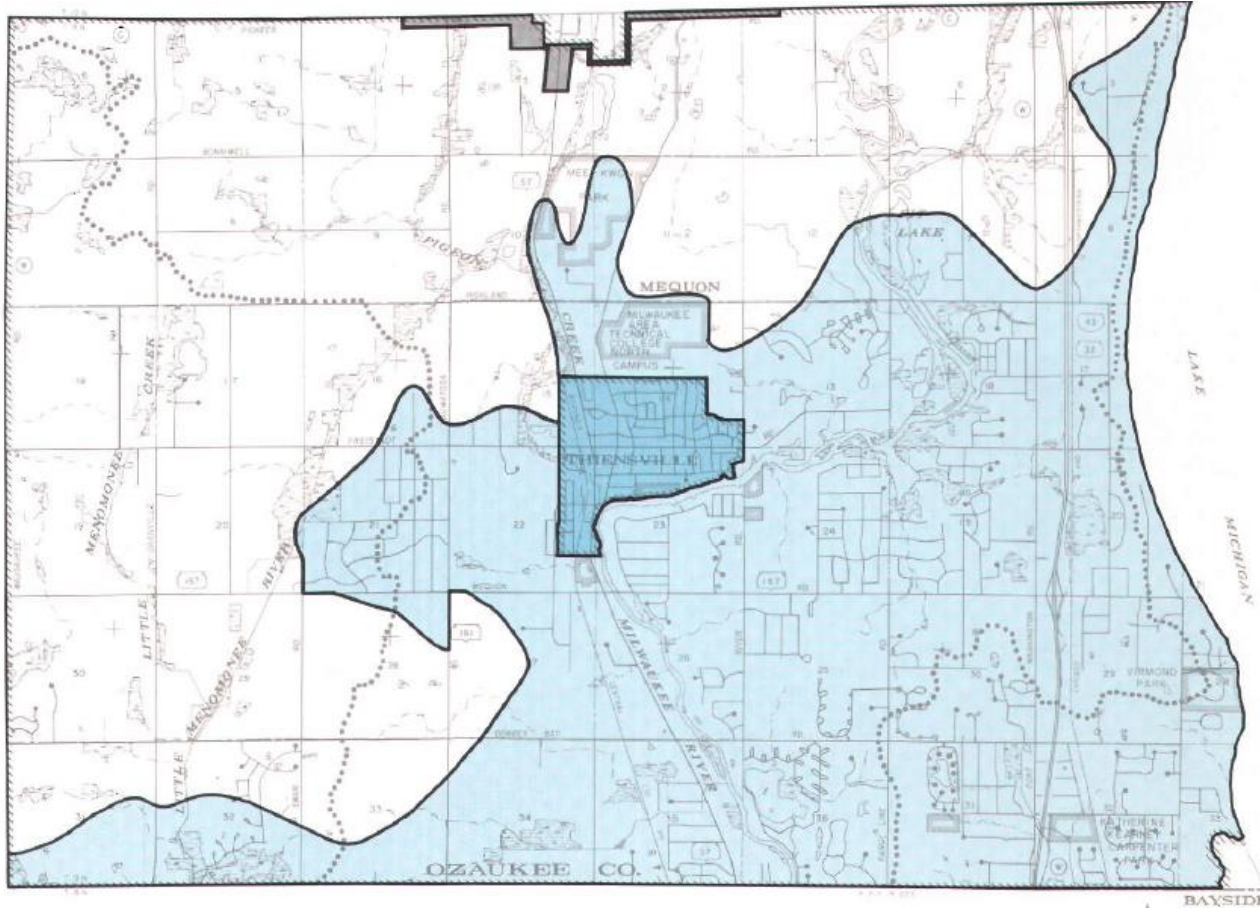
Background – Today's Map



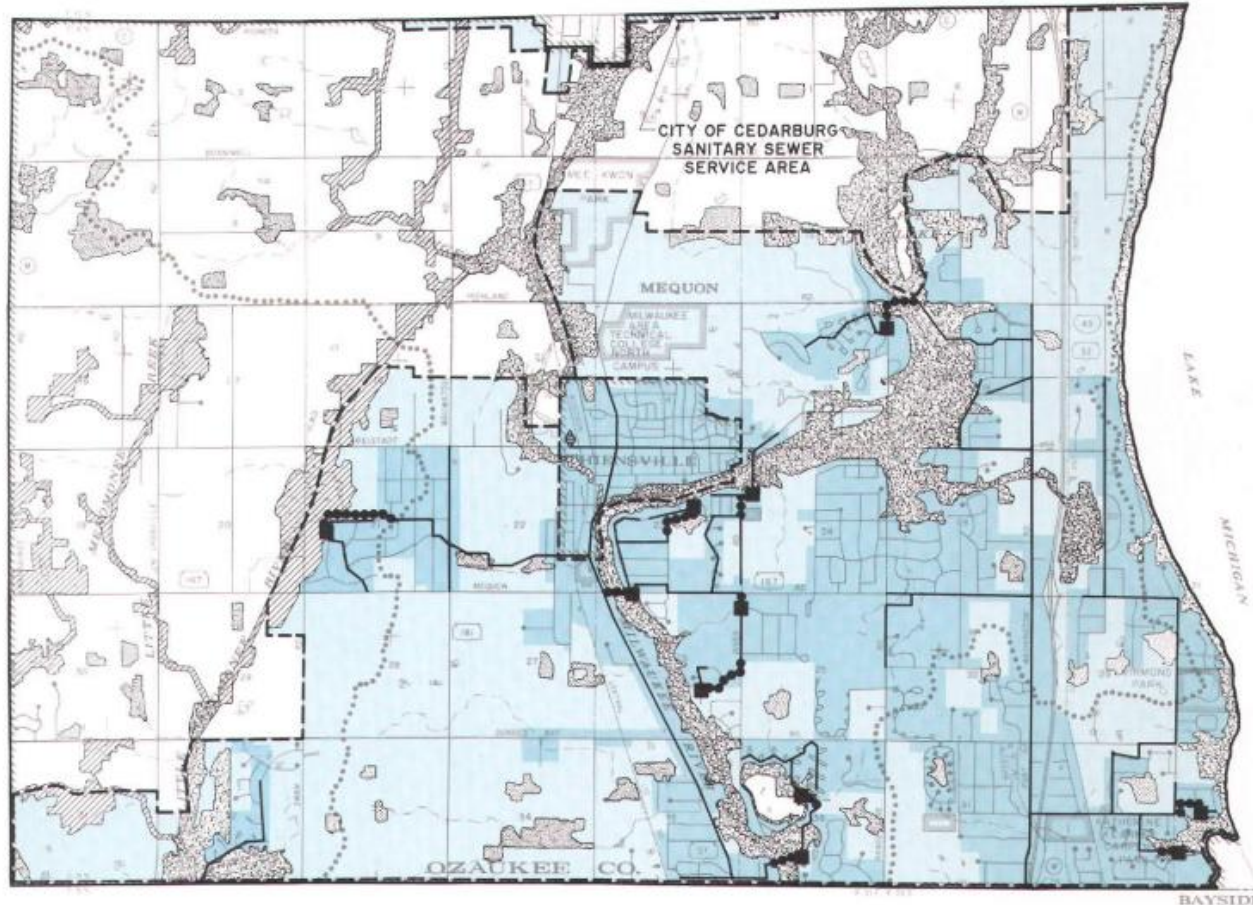
Background – MMSD Exclusion Map 2018



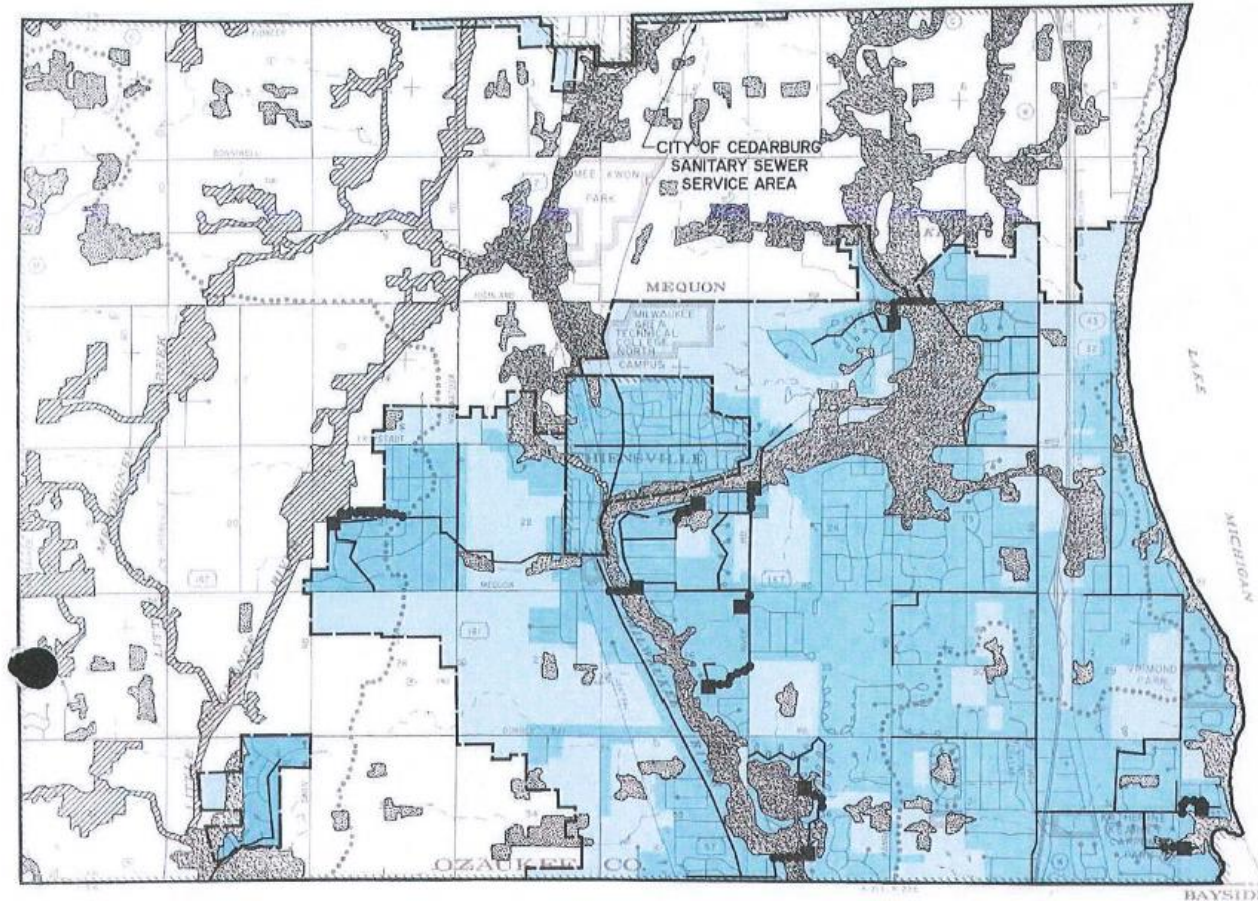
Background – Historical Map 1979



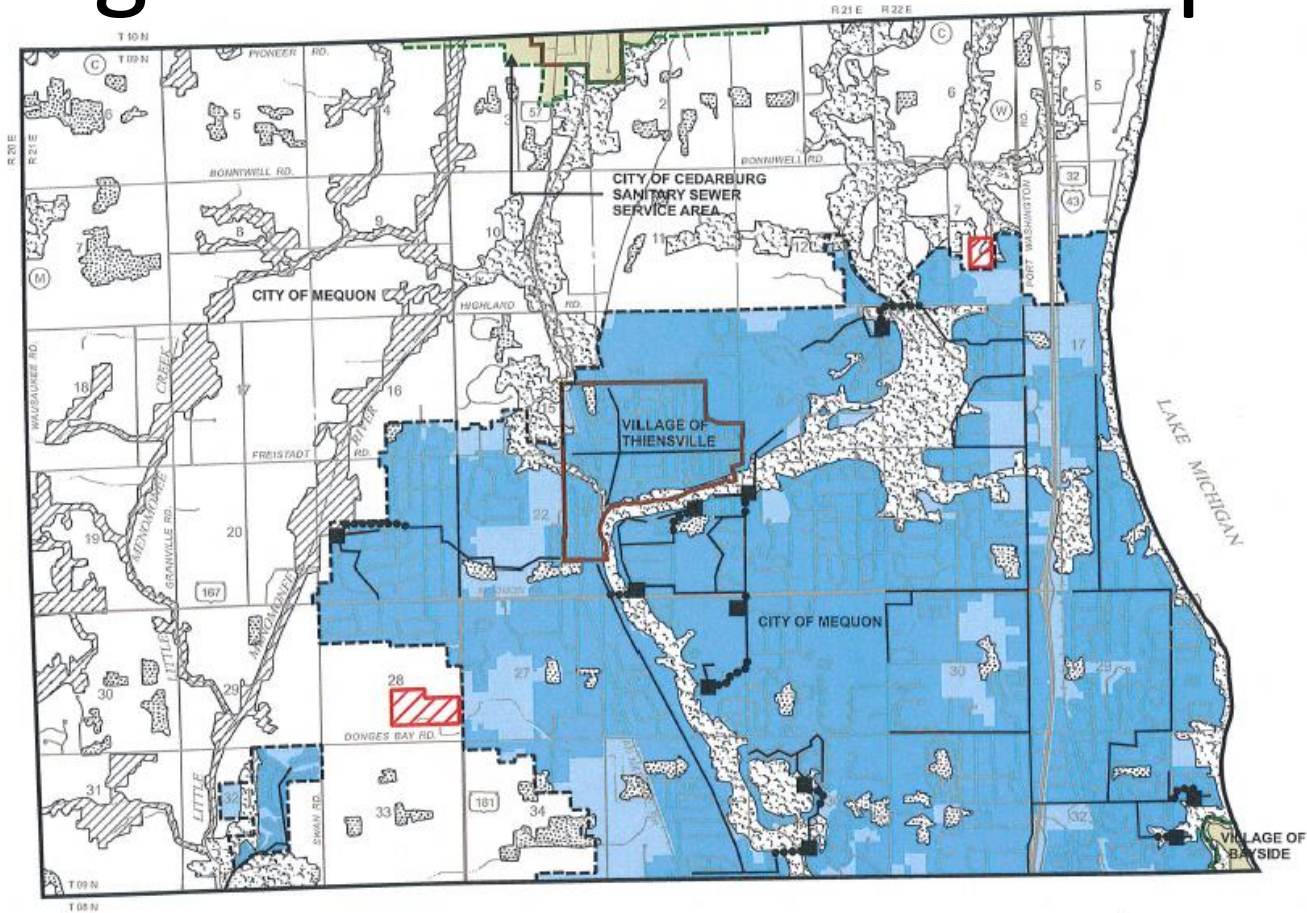
Background – Historical Map 1992



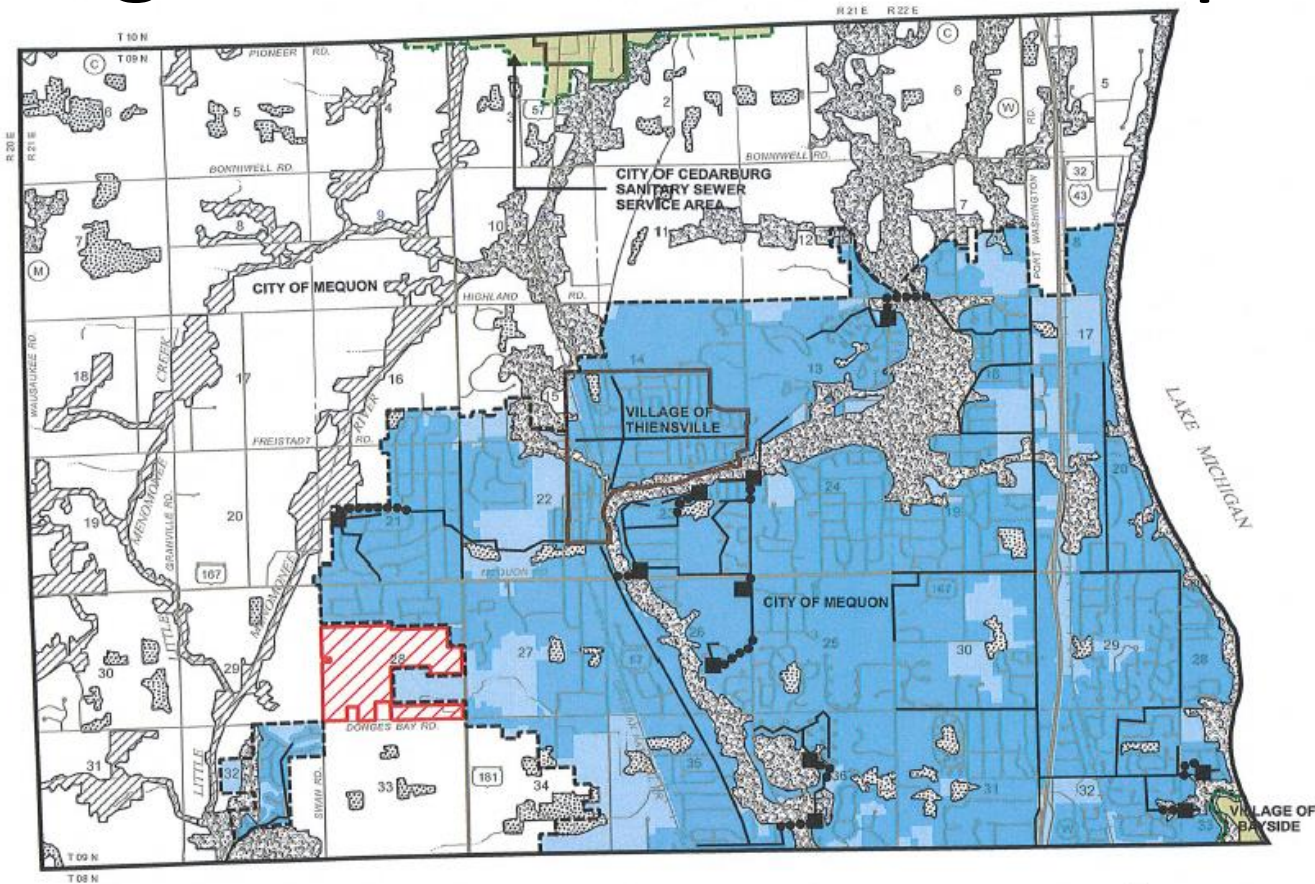
Background – Historical Map 1995



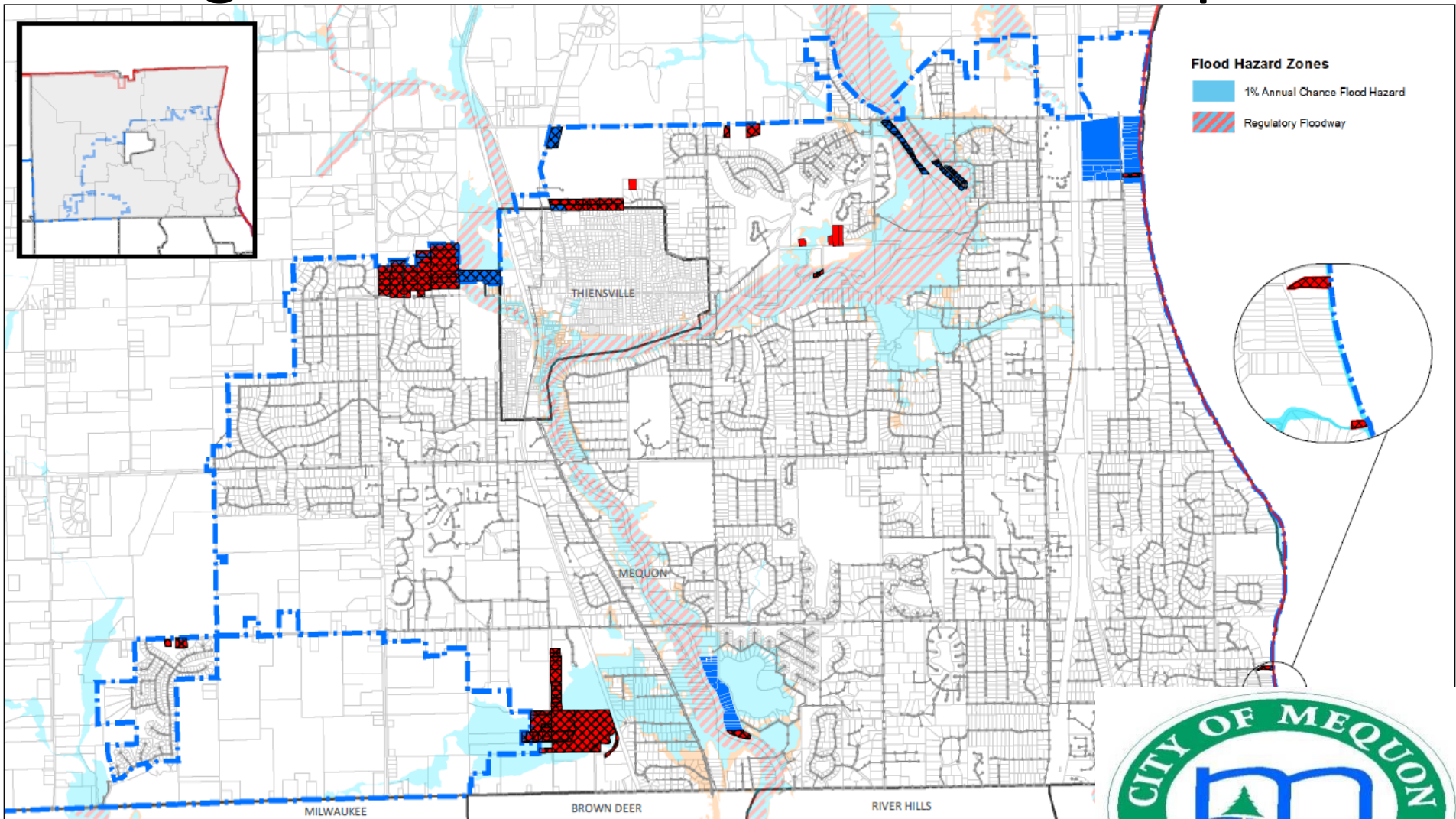
Background – Historical Map 2006



Background – Historical Map 2014



Background – MMSD Exclusion Map 2018



Background – Common Council

- Resolution 3506 - A Resolution Establishing a Policy for Exempting Properties from the City of Mequon Sewer Tax District (3/18)
- Resolution 3558 - A Resolution Exempting Certain Properties from Capital Charges Levied by the MMSD (9/18)



Background – Resolution 3558

- If any of the properties listed (in Res 3558)
 - connect to the public sanitary sewer, or
 - request to be added into the SSA, or
 - request to remain within the SSA,They shall be subject to all capital charges for that property starting with the 2018 tax roll.



Background – Resolution 3558

- All properties within the Sewer Utility District shall assume the cost for the annual Mequon Sewer Tax District charges attributable to sanitary sewer service.



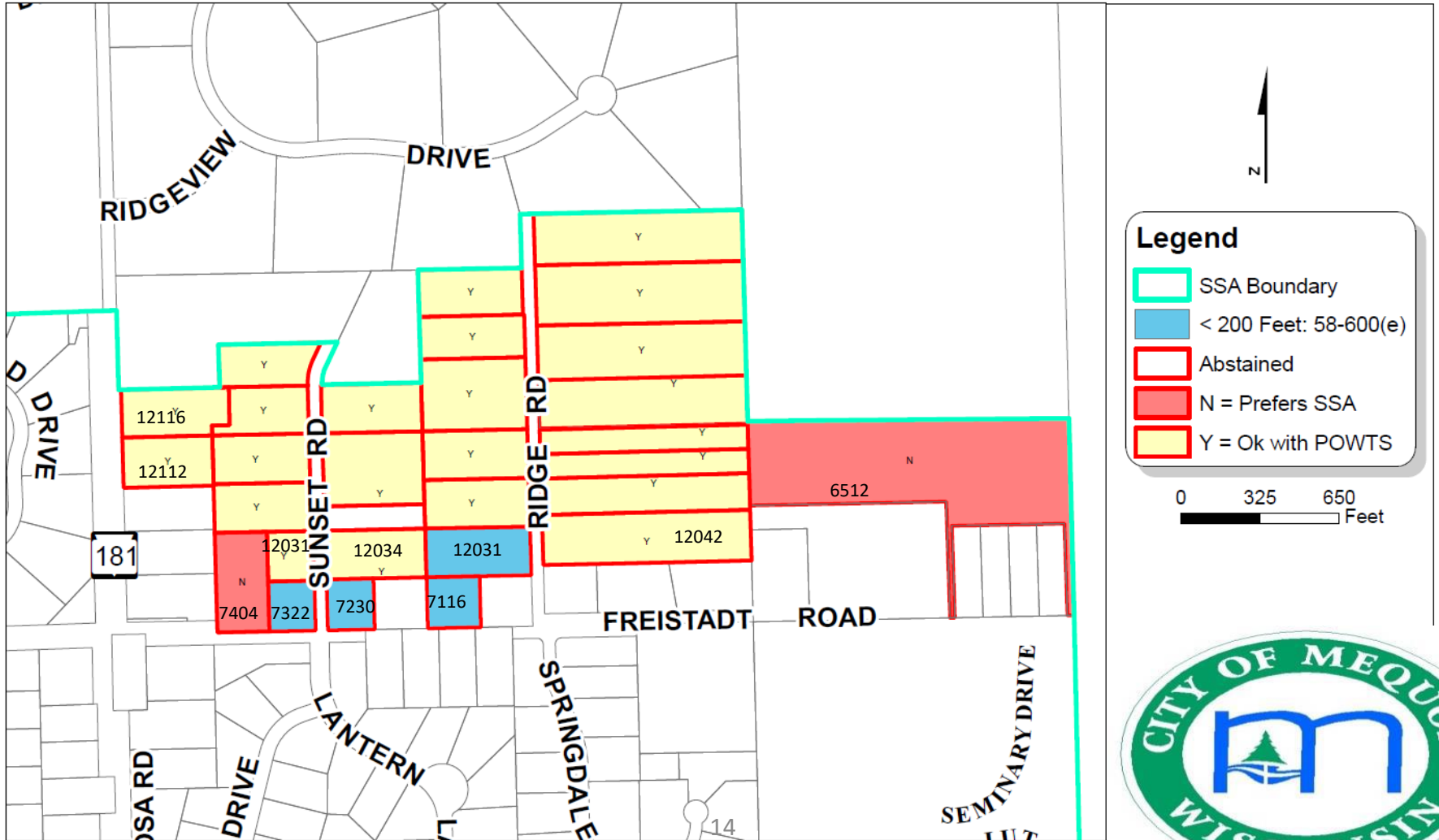
SSA Amendment - Survey

- Staff performed outreach to confirm property owner preference to incur future charges and remain in, or be removed out of the Mequon Sewer Tax District and Sewer Service Area.
- A septic mound or holding tank may be the only reasonable or feasible alternative to service certain properties because of access to the nearest sanitary sewer.

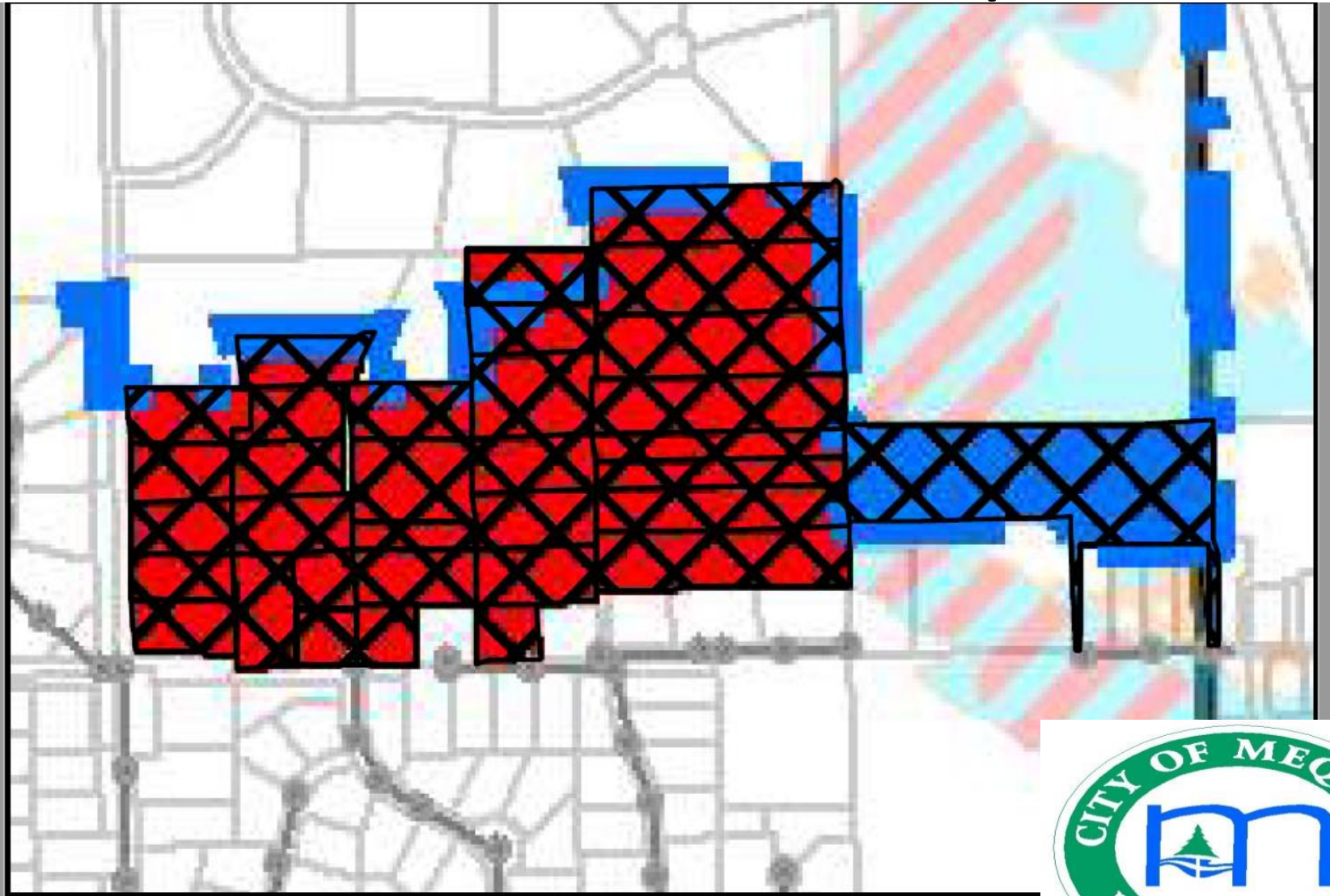


Survey Results – 5.c.1

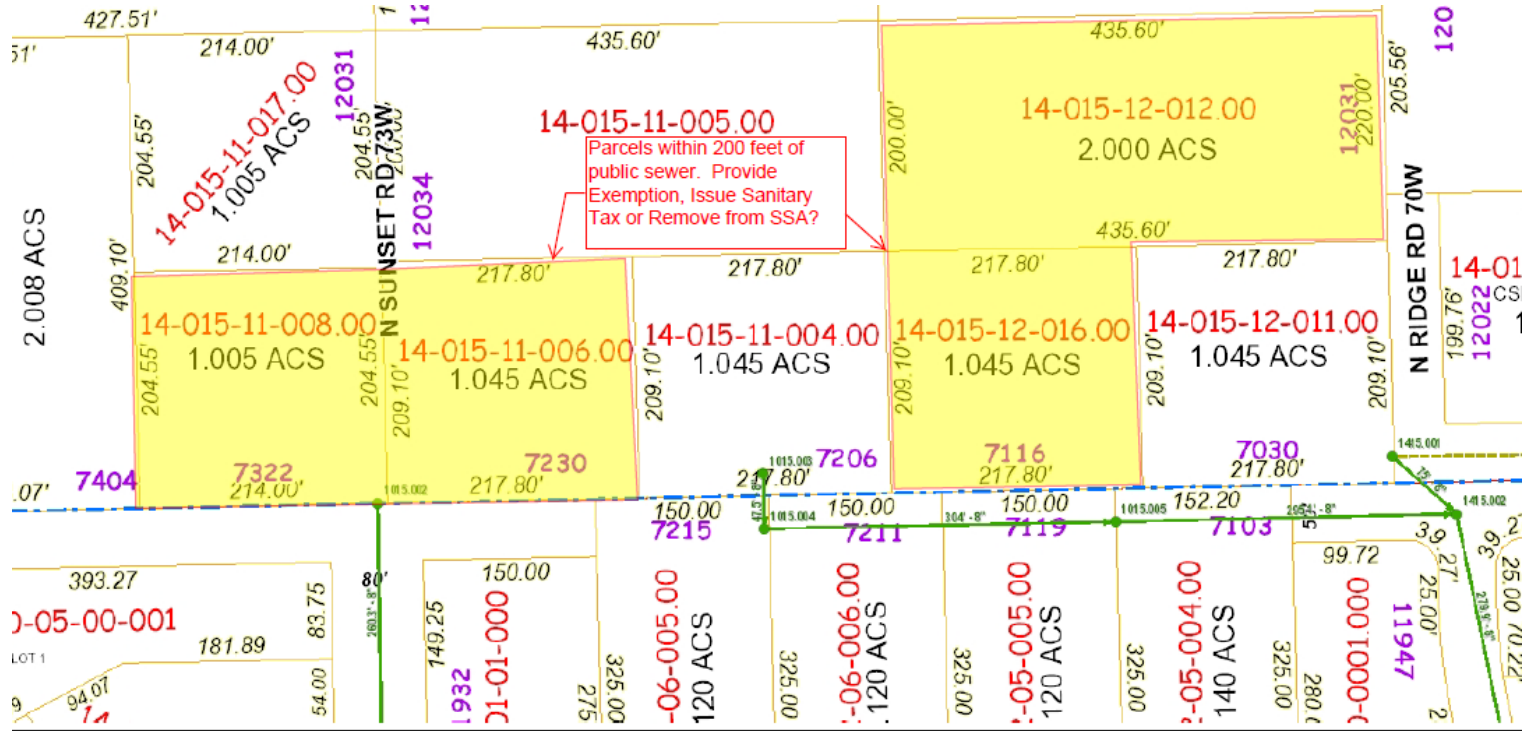
Sunset Road/Ridge Road



Allowed for Exclusion Map – 5.c.1



Site Specific Examples – 5.c.1



Sanitary Sewer Service
Freistadt Road



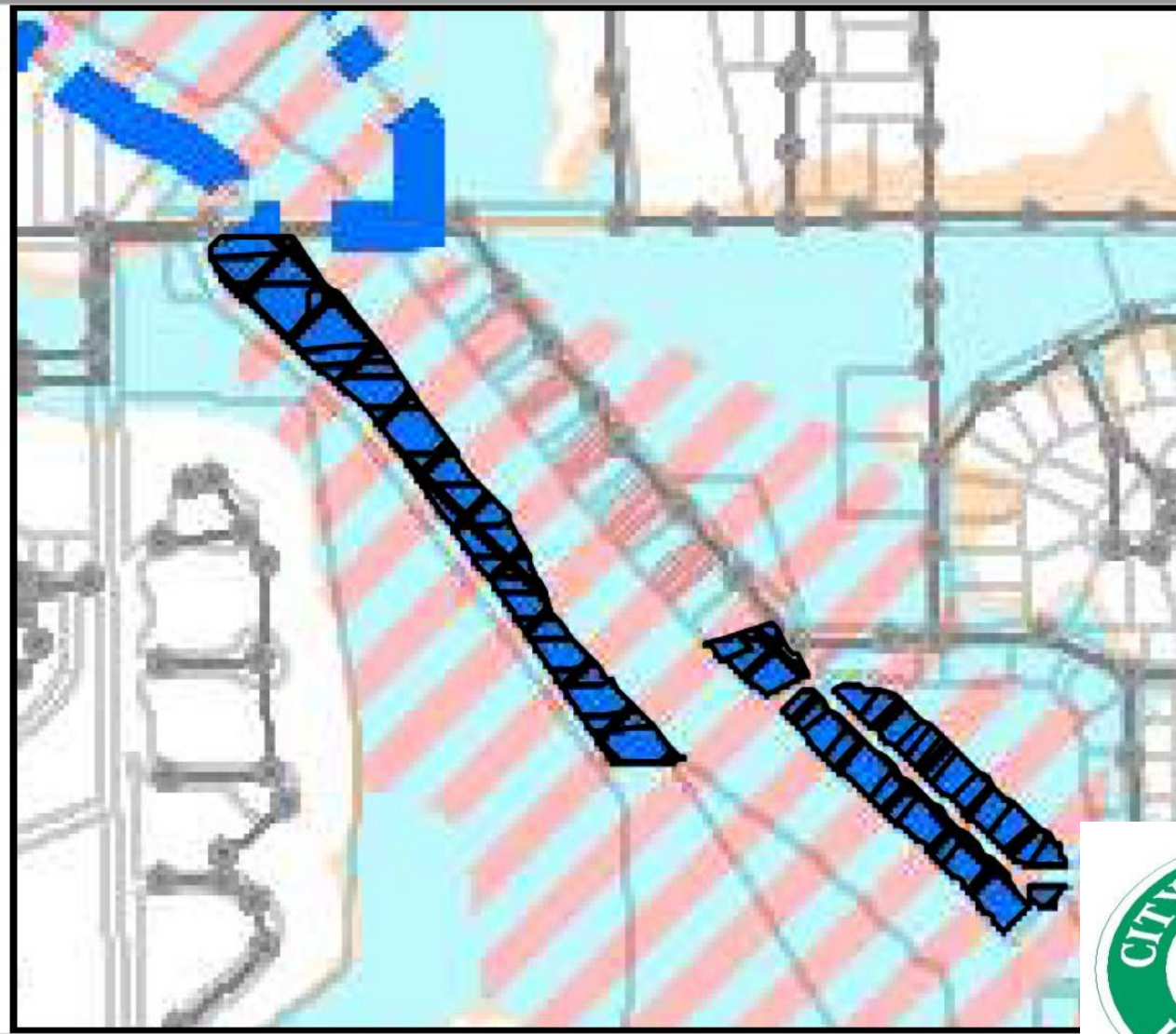
Ozaukee County
121 W Main St
P.O. Box 894



Allowed for Exclusion Map – 5.c.1

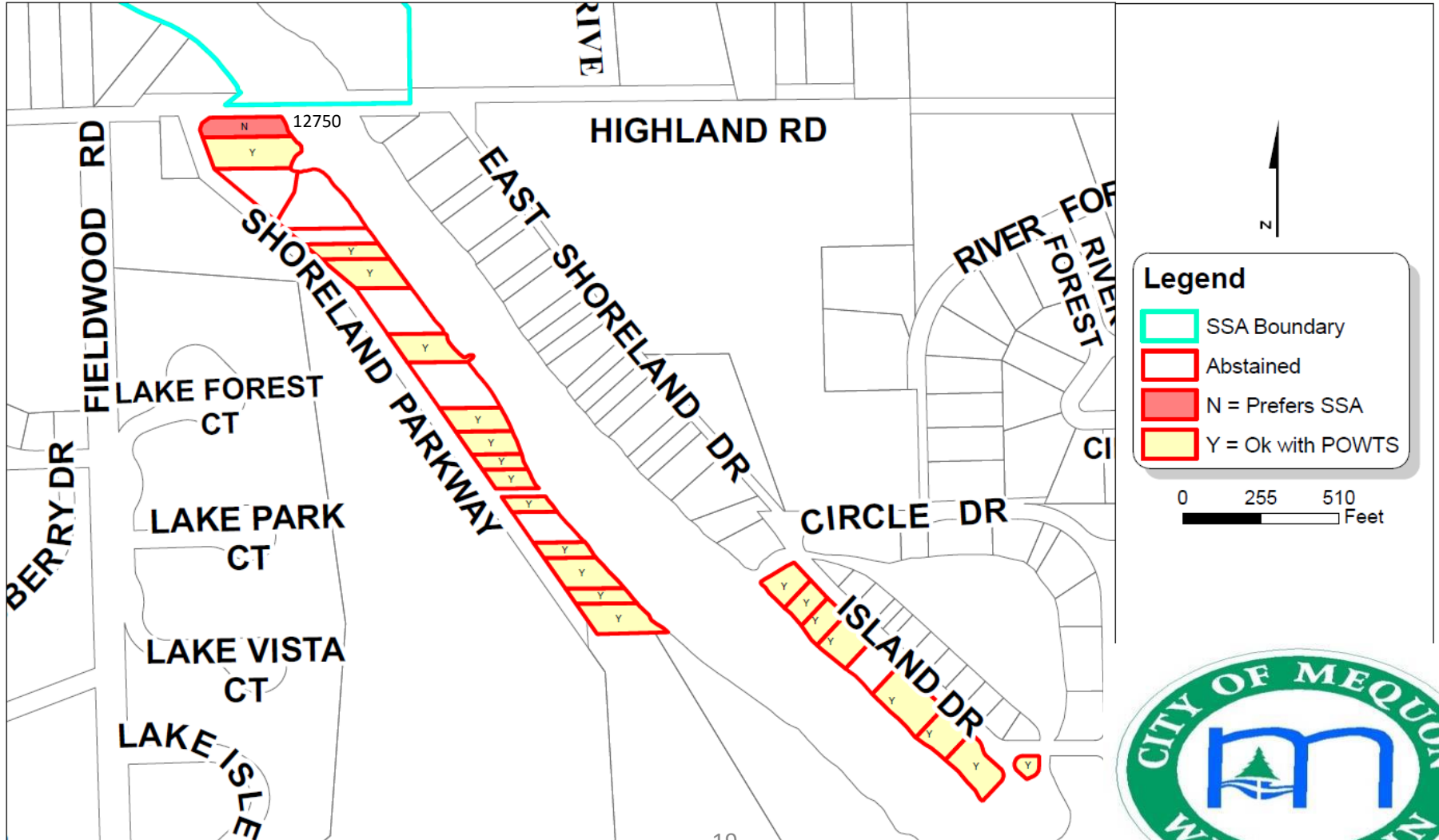


Allowed for Exclusion Map – 5.c.2



Survey Results – 5.c.2

Shoreland Parkway

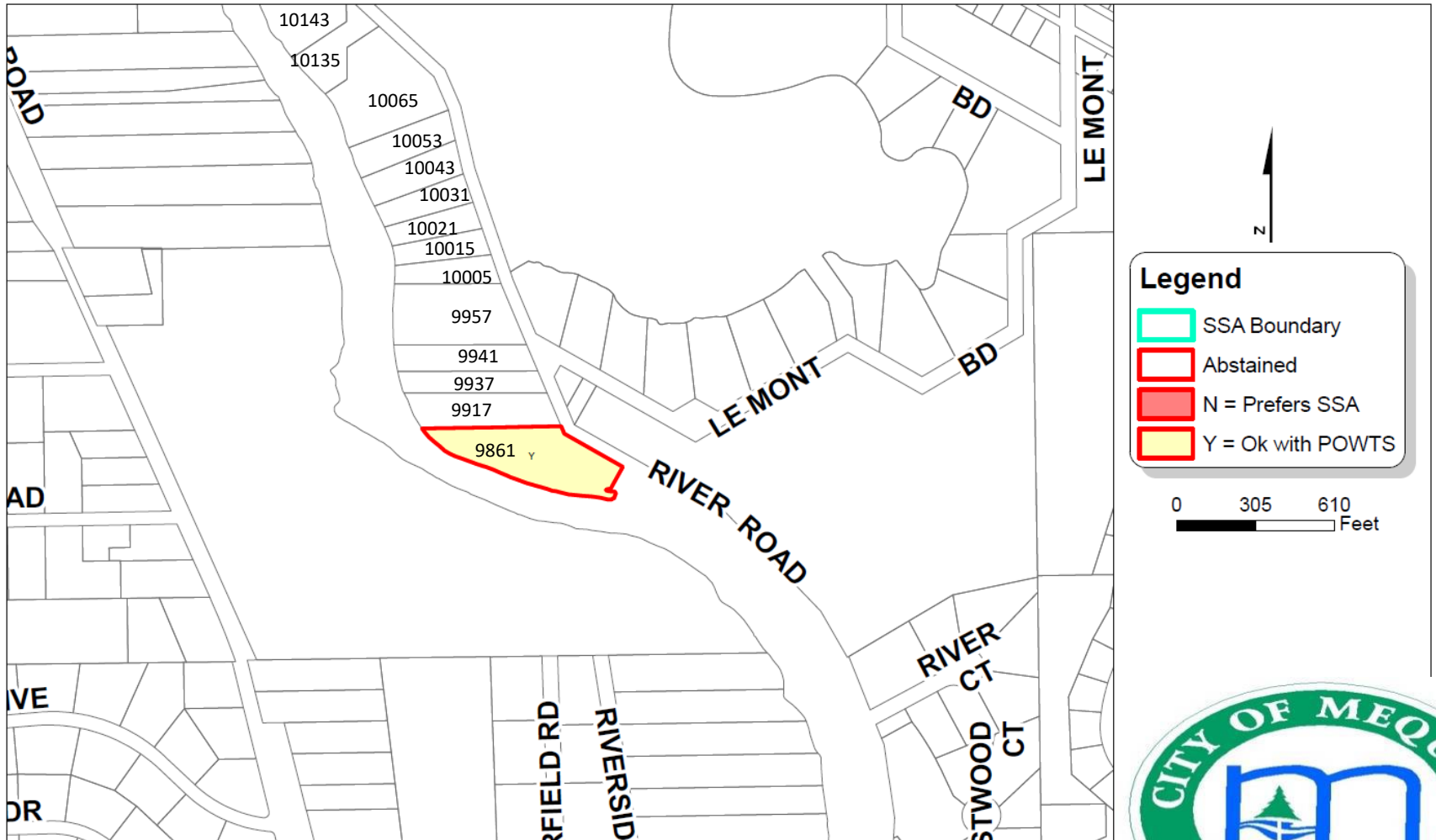


Allowed for Exclusion Map – 5.c.2



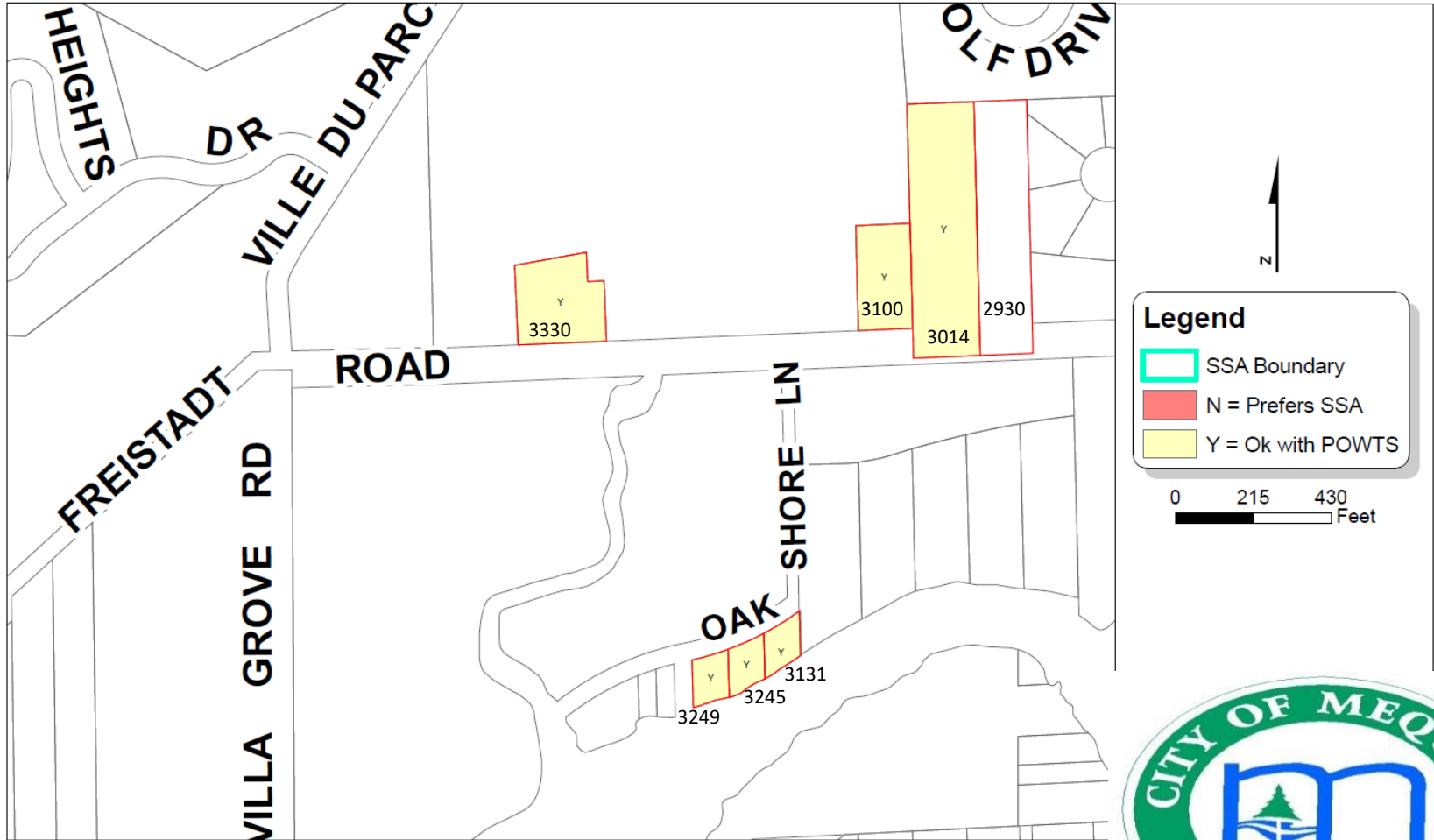
Survey Results – 5.c.2

River Road

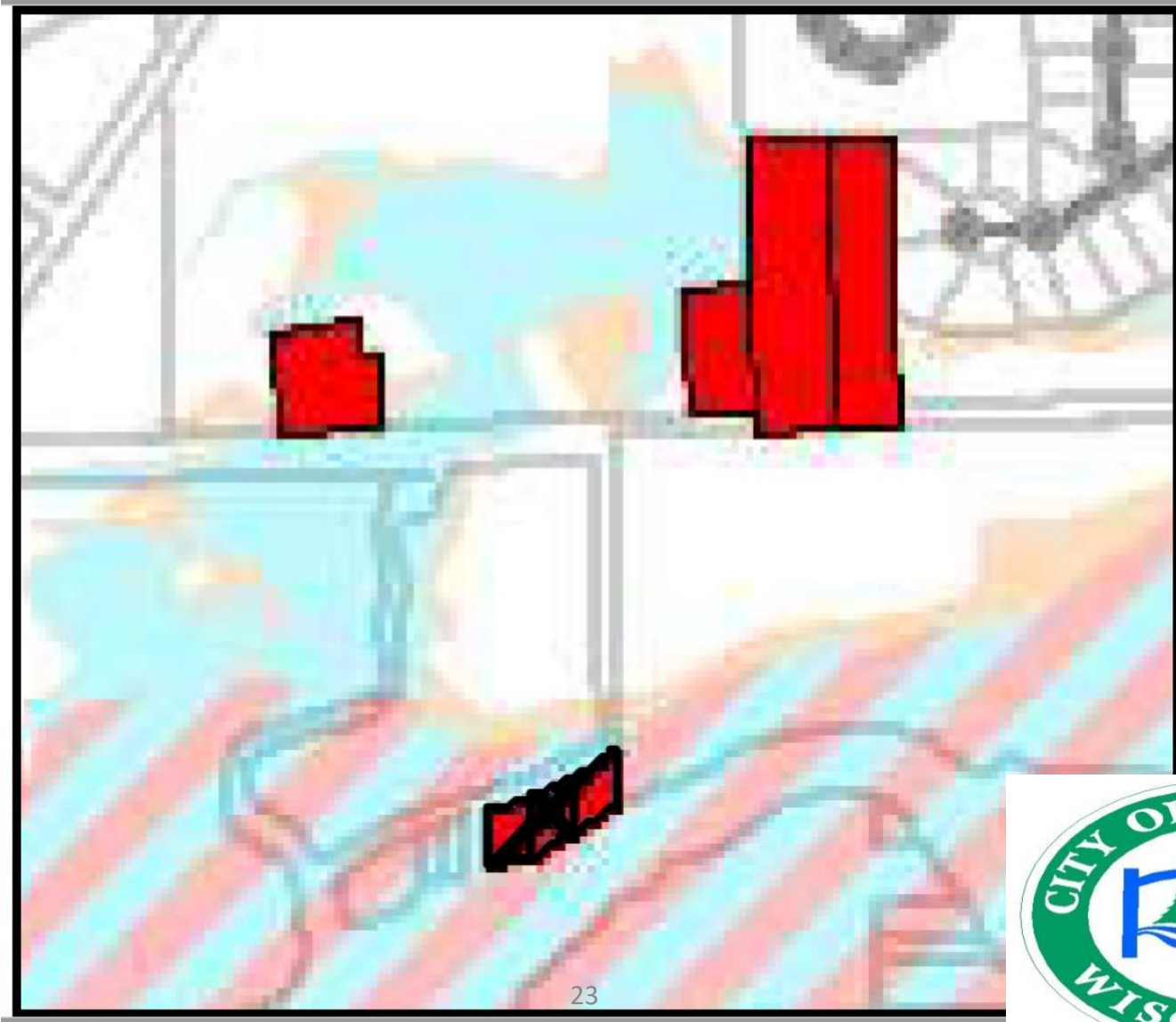


Survey Results – 5.c.3

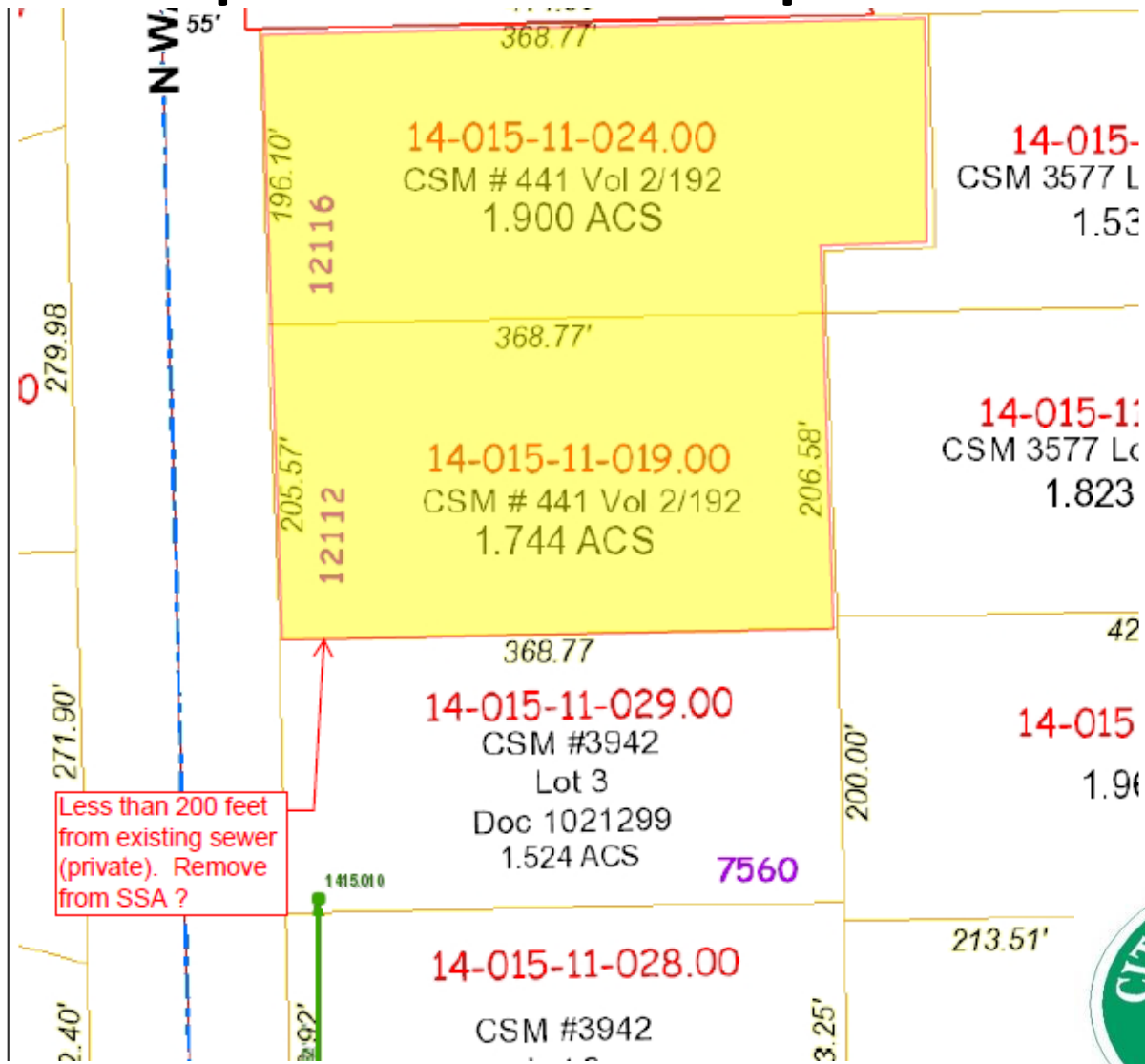
Freistadt Road/Oak Shore Lane



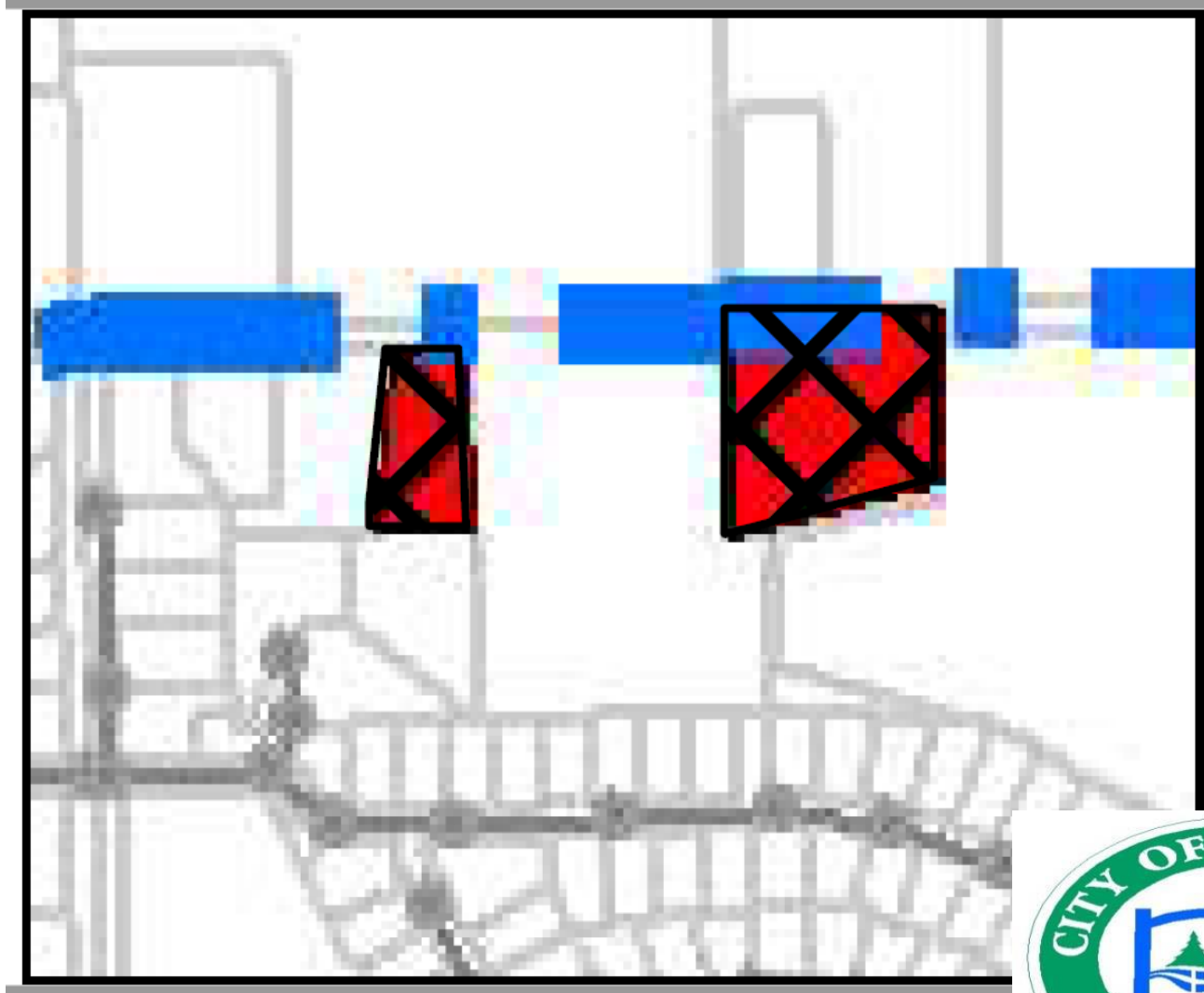
Allowed for Exclusion Map – 5.c.3



Site Specific Examples – 5.c.4



Allowed for Exclusion Map – 5.c.4



Site Specific Examples – 5.c.4



Sanitary Sewer Service
4015 Highland Road

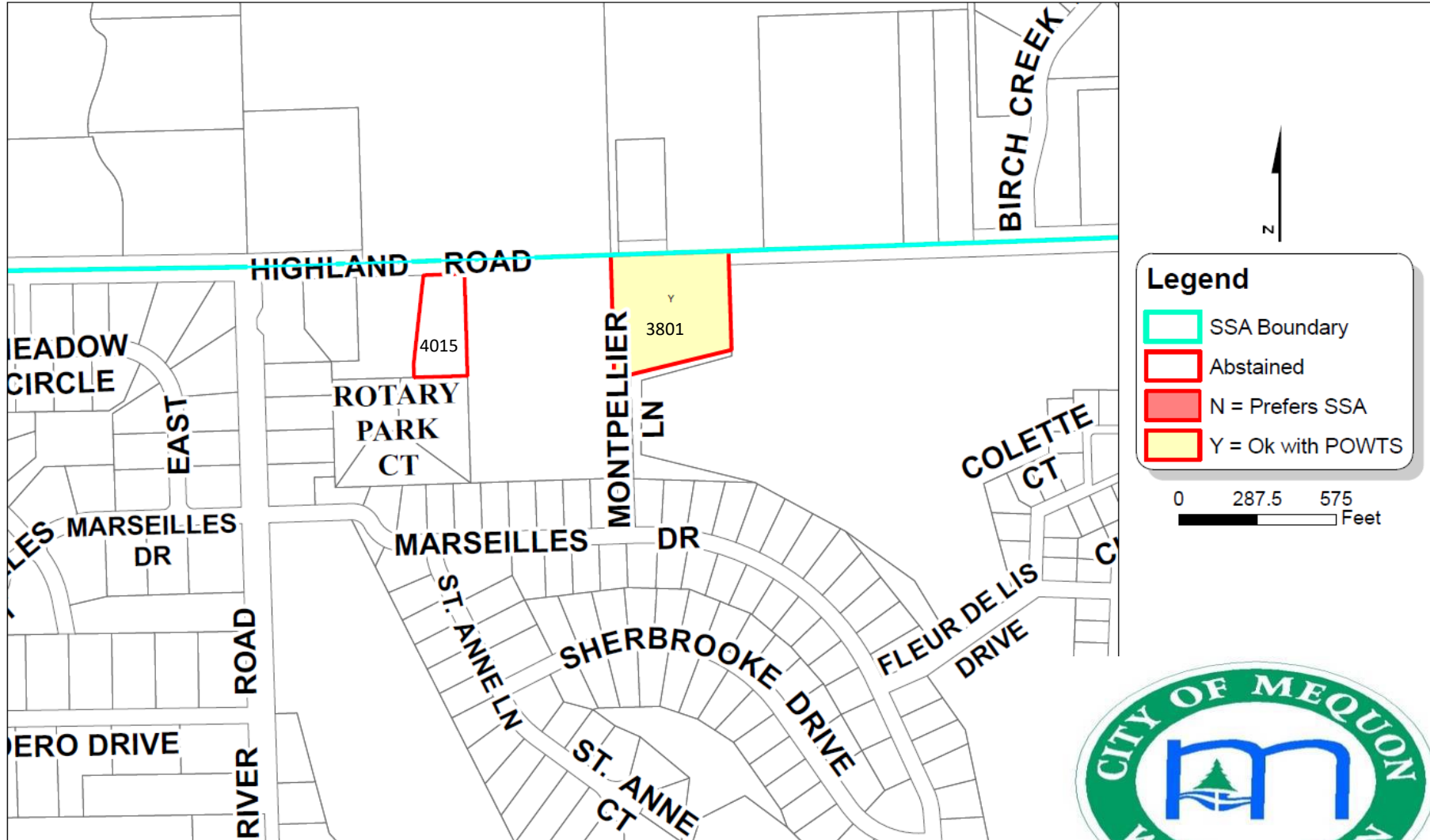


Ozaukee County
121 W Main St
P.O. Box 994

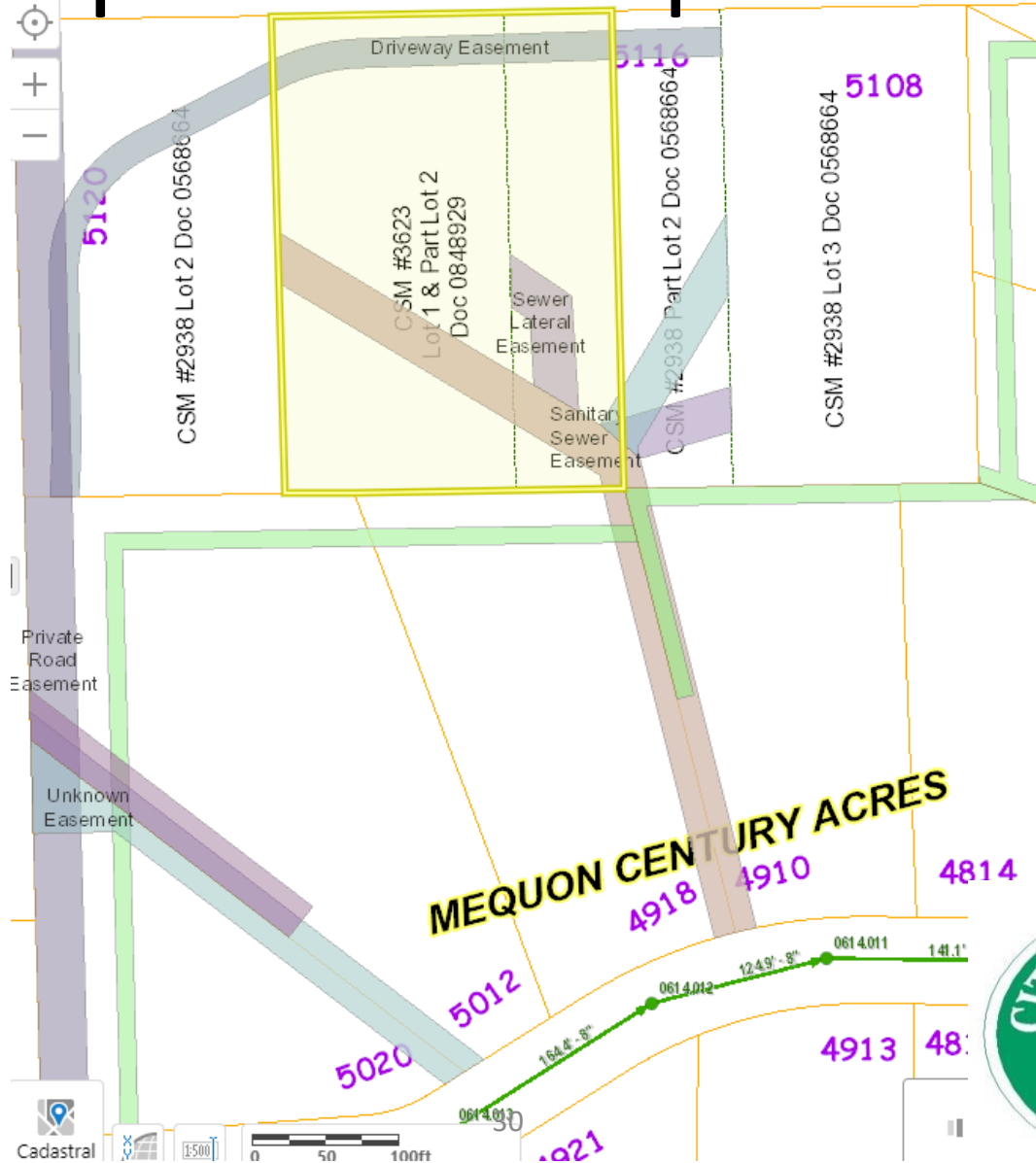


Survey Results – 5.c.4

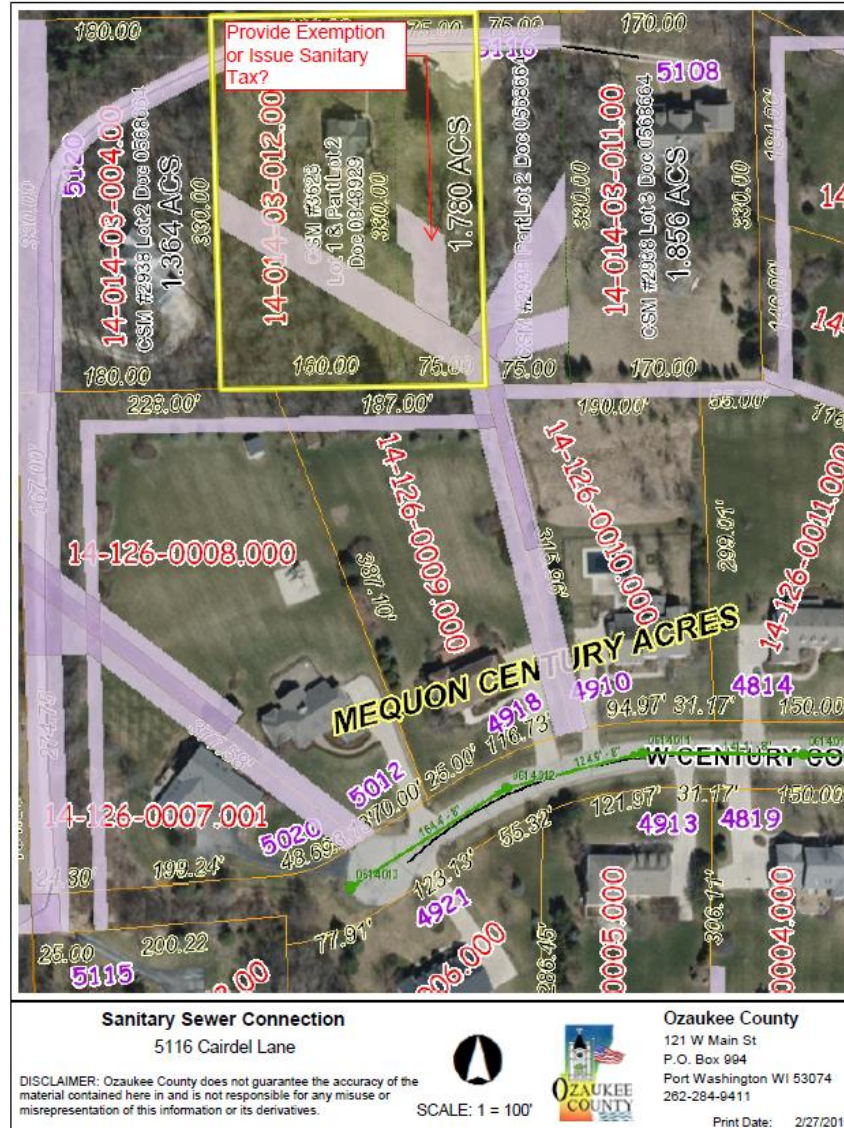
Highland Road



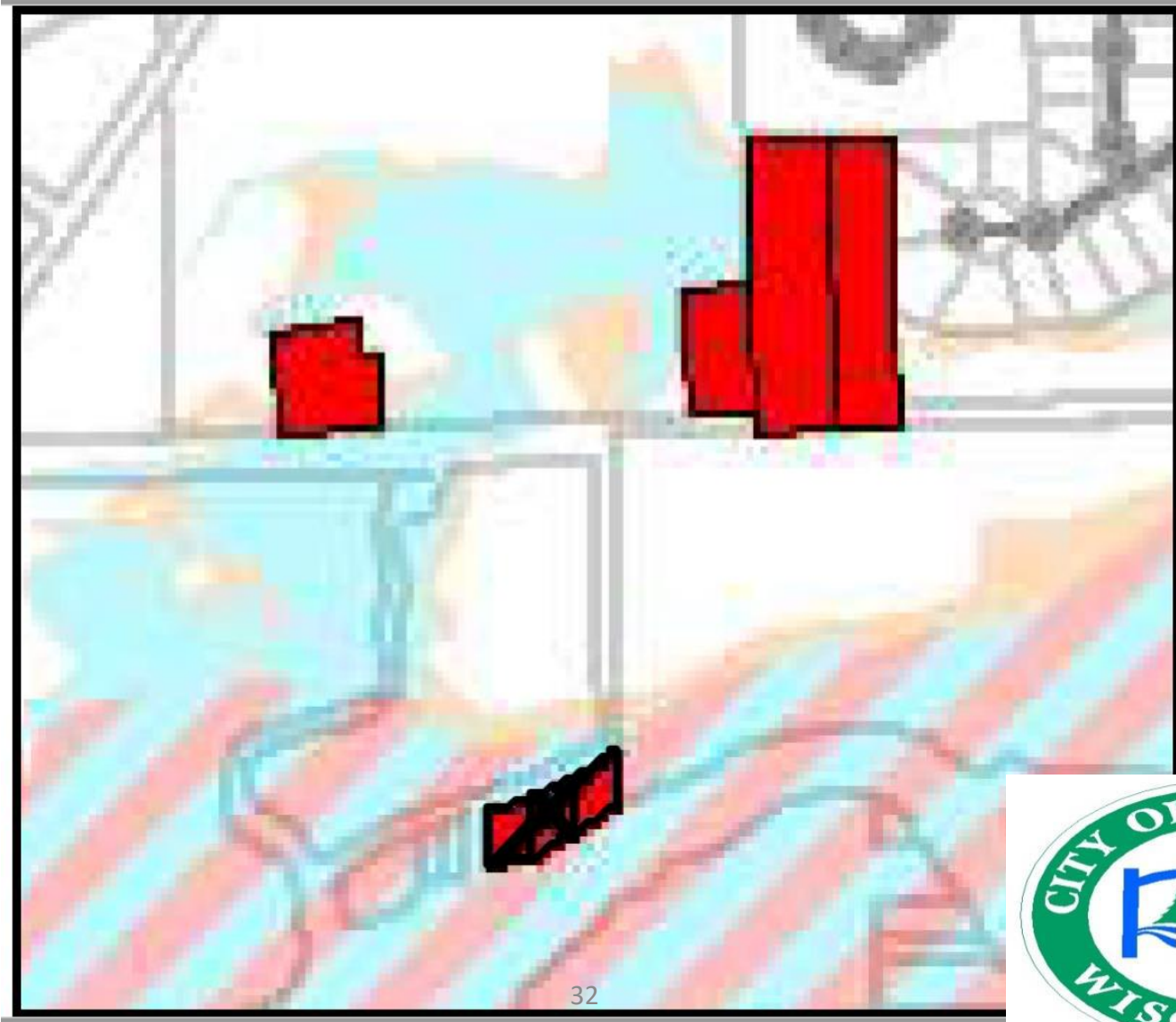
Site Specific Examples – 5.c.5



Site Specific Examples – 5.c.5

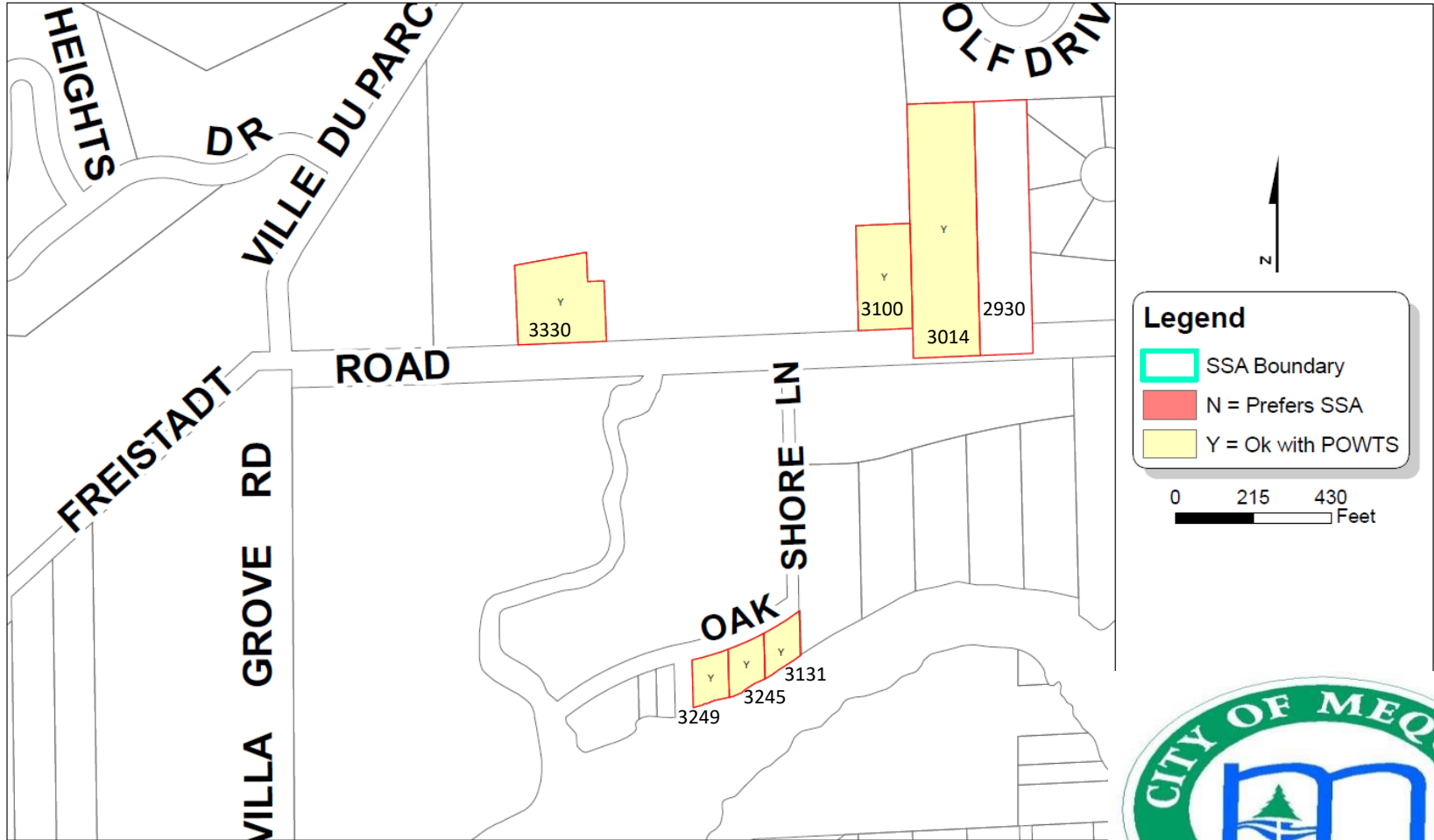


Allowed for Exclusion Map – 5.c.6



Survey Results – 5.c.6

Freistadt Road/Oak Shore Lane

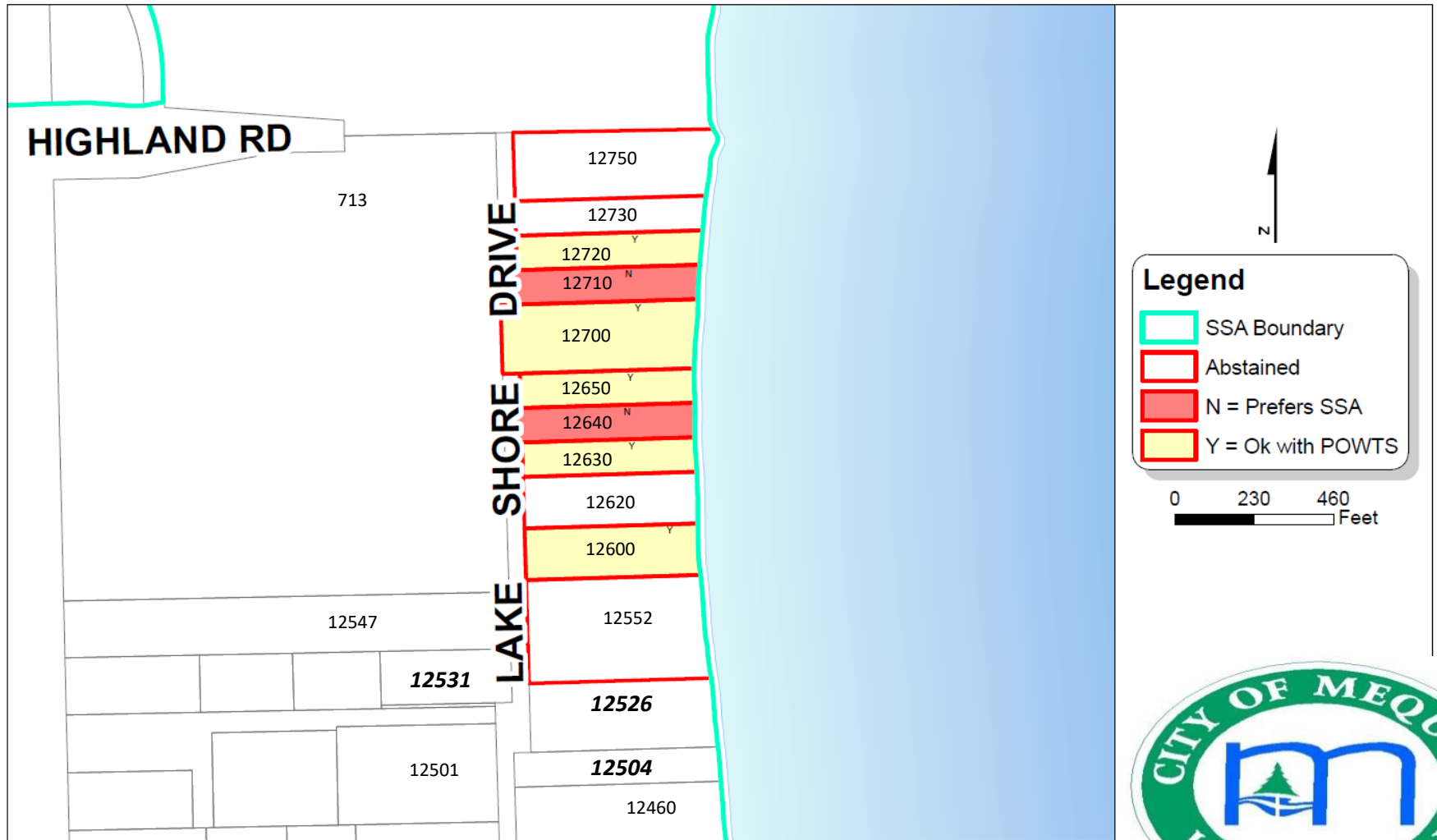


Allowed for Exclusion by MMSD - 5.d.1



Survey Results – 5.d.1

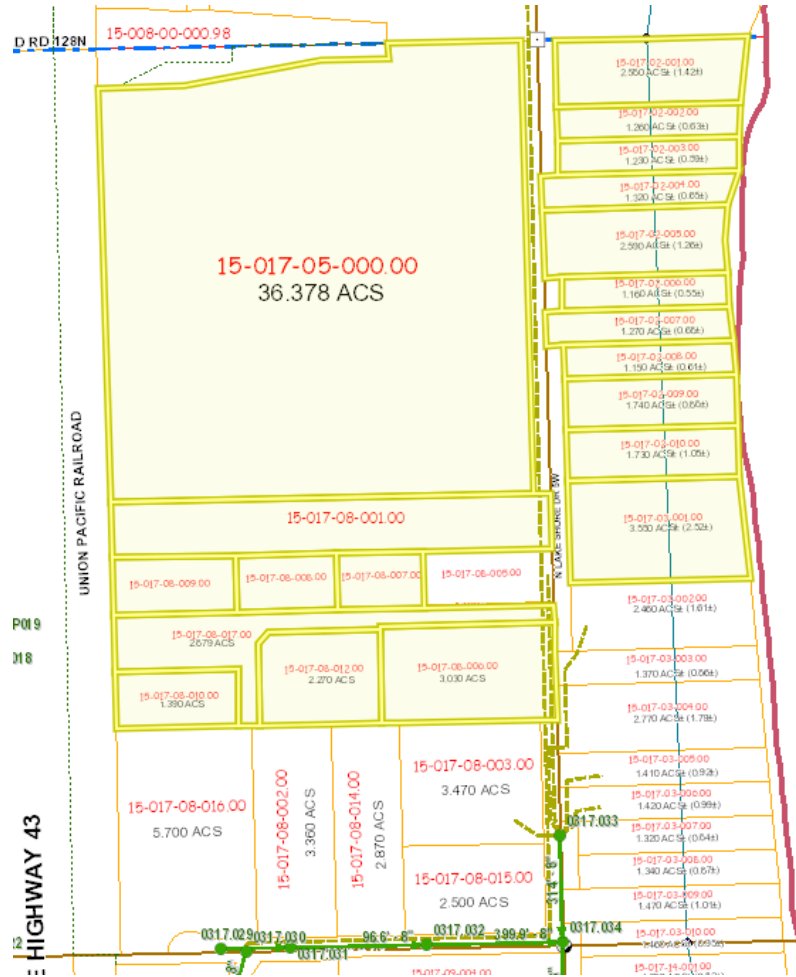
Lakeshore Drive - Parcels in Resolution 3558



Site Specific Examples – 5.d.2

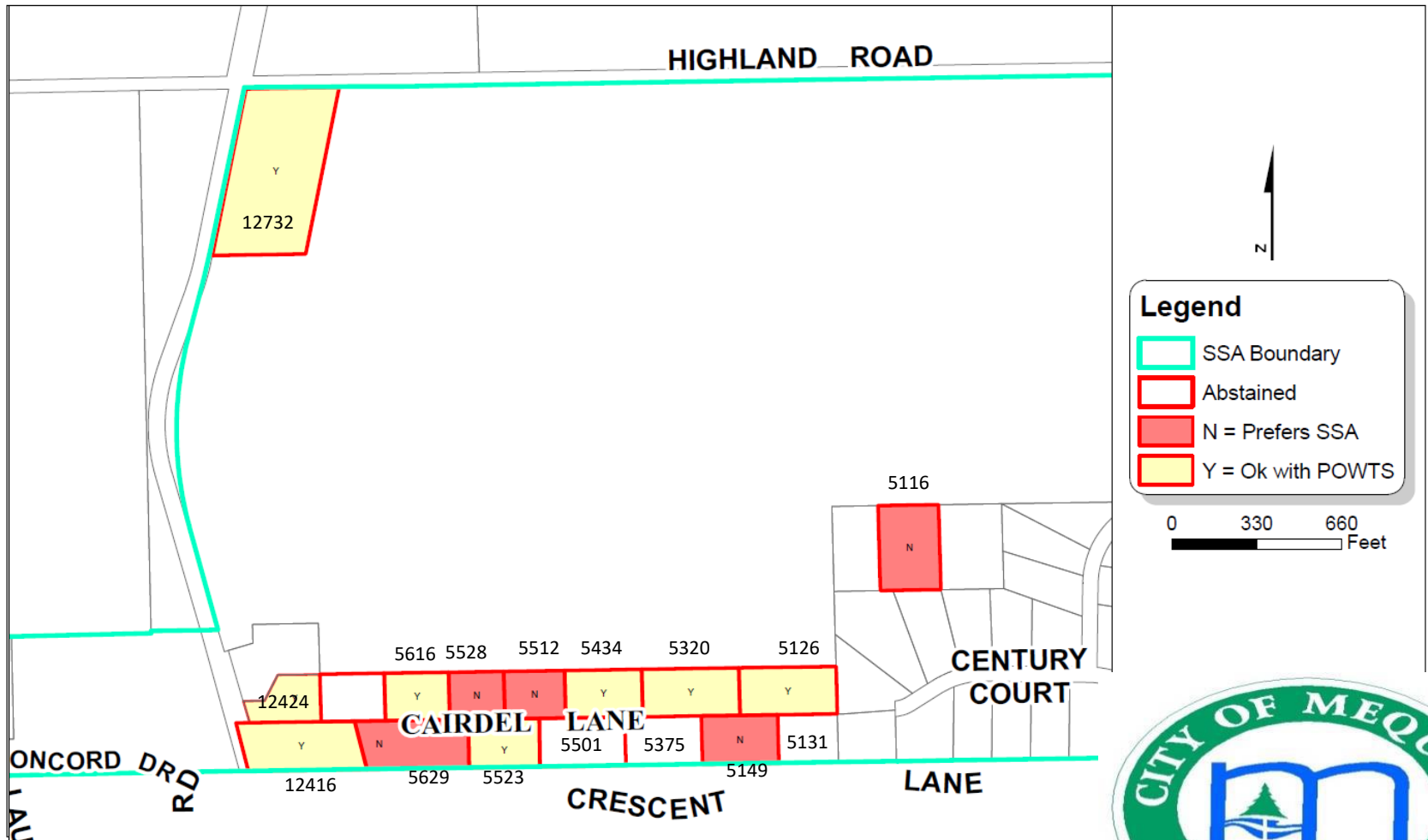


Parcels Verified by City – 5.d.3

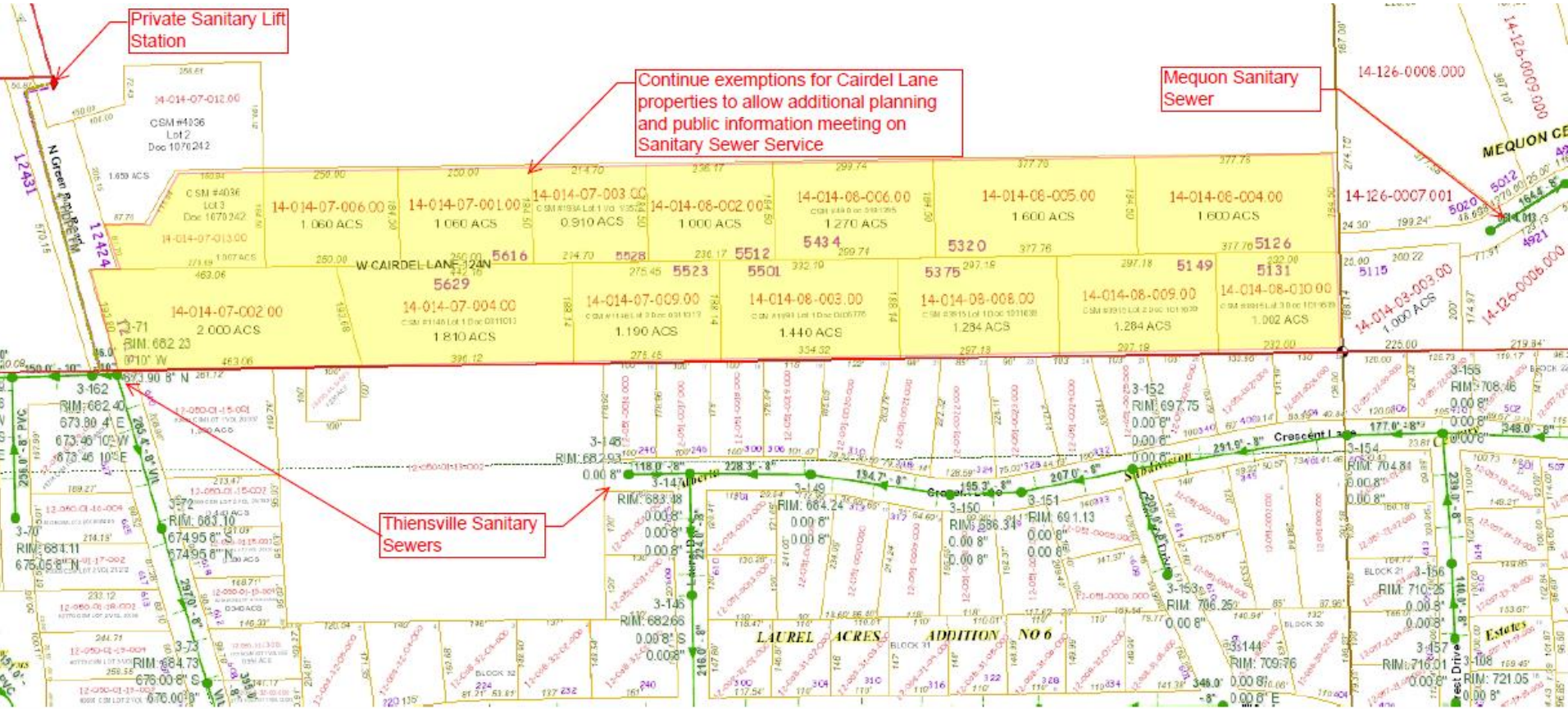


5.d.4- Survey Results

Cairdel Lane



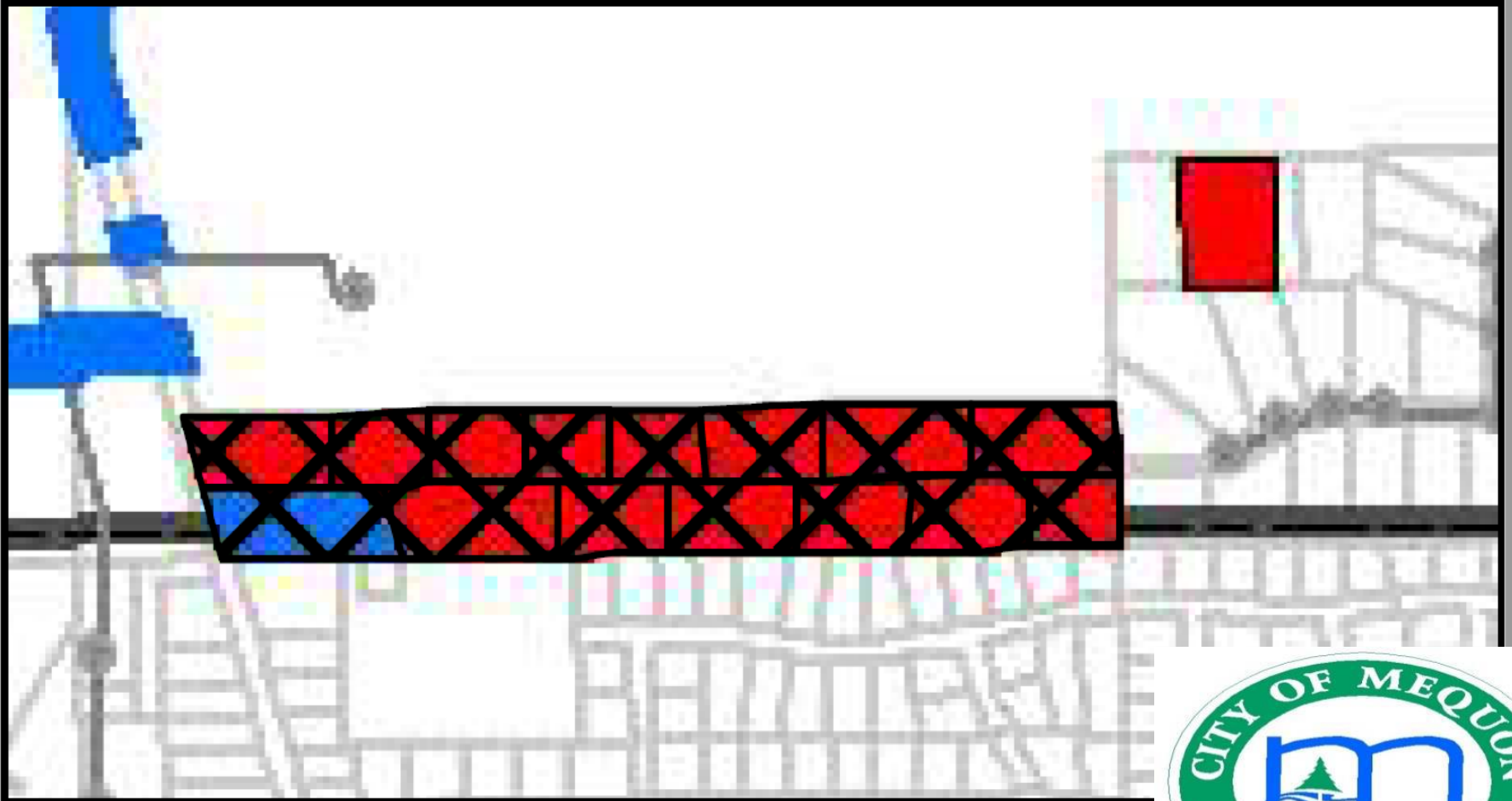
Site Specific Examples – 5.d.4



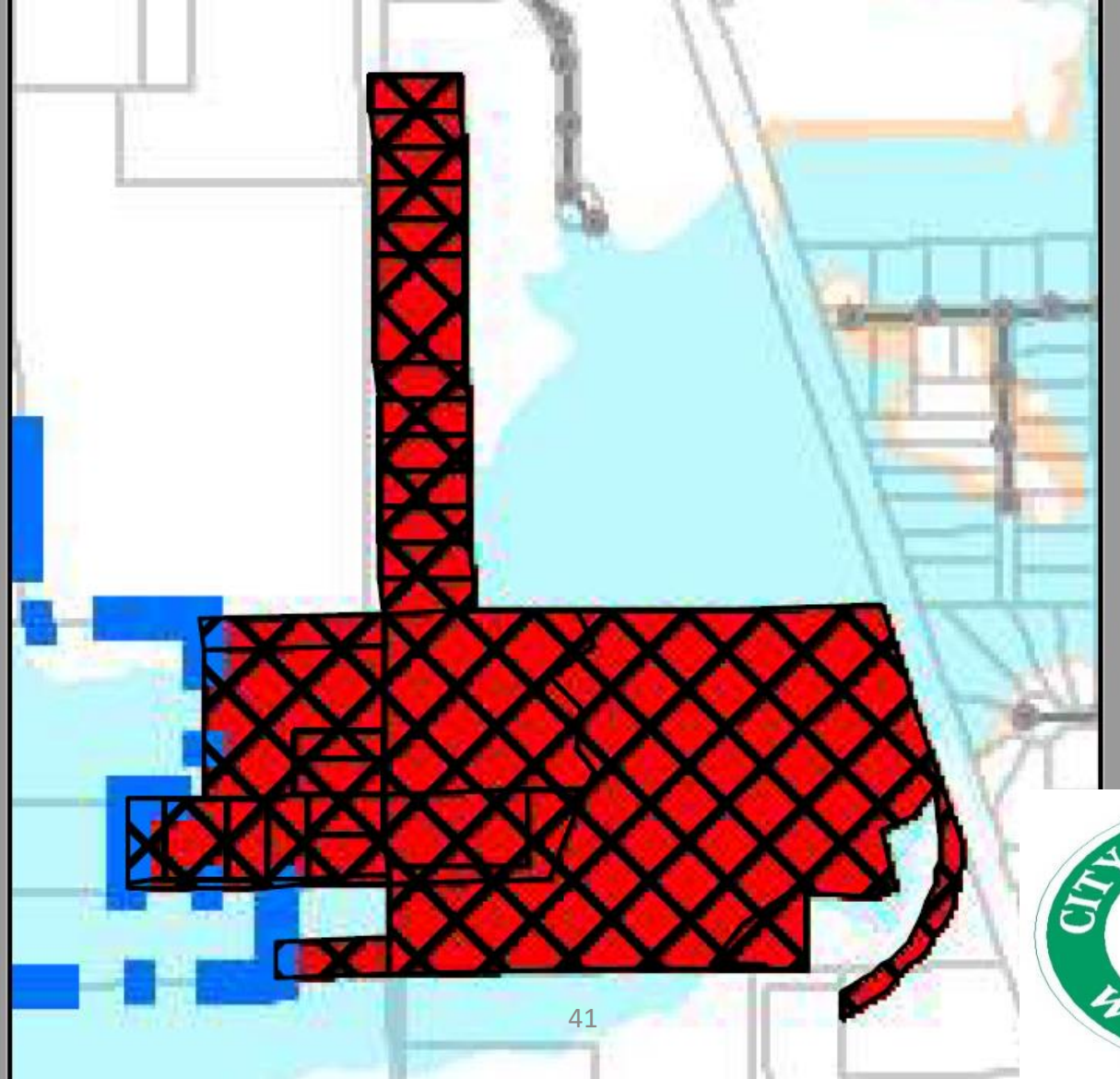
Sanitary Sewer Service
Cairdel Lane



5.d.4- Allowed for Exclusion Map

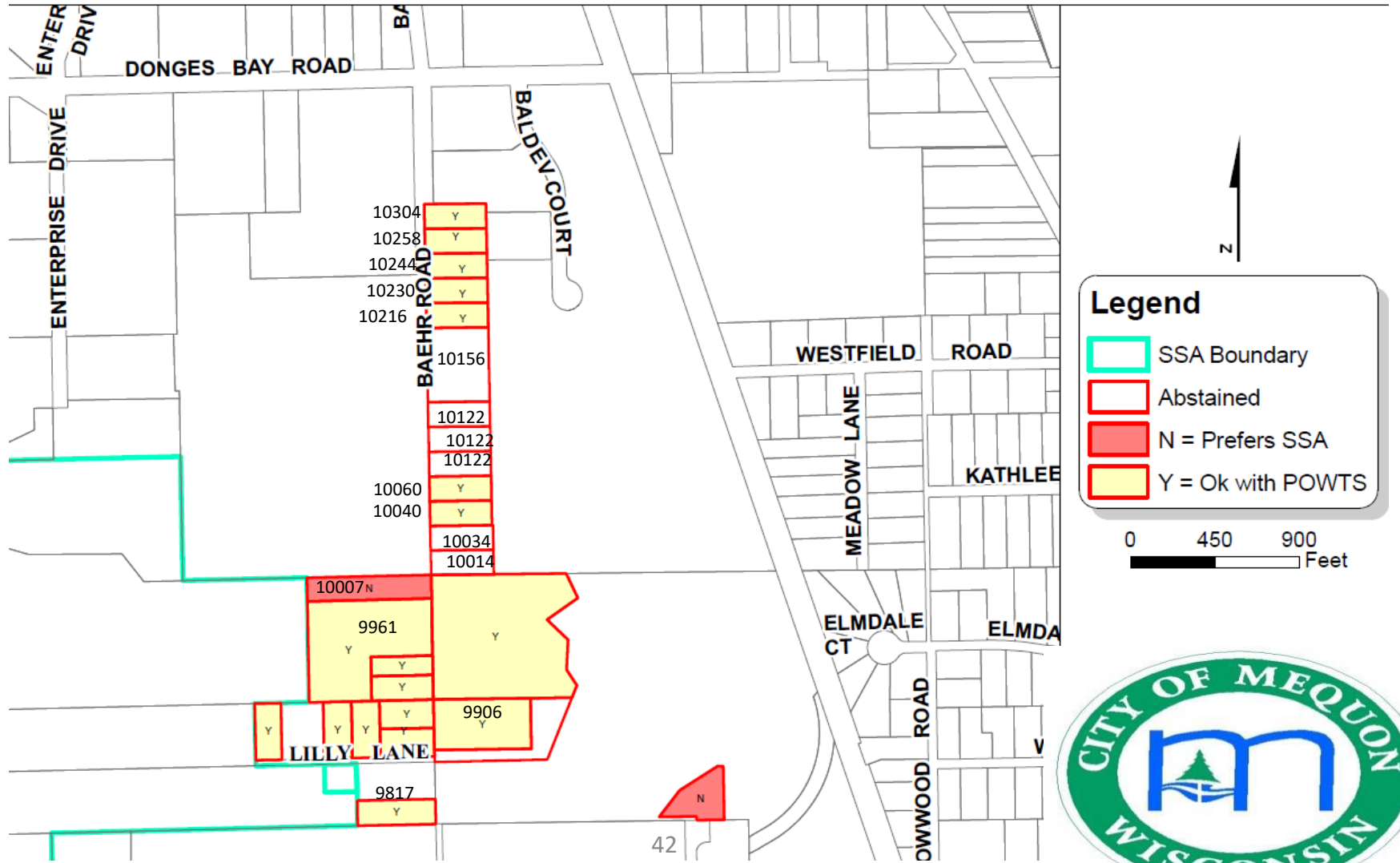


Allowed for Exclusion Map - 5.d.5

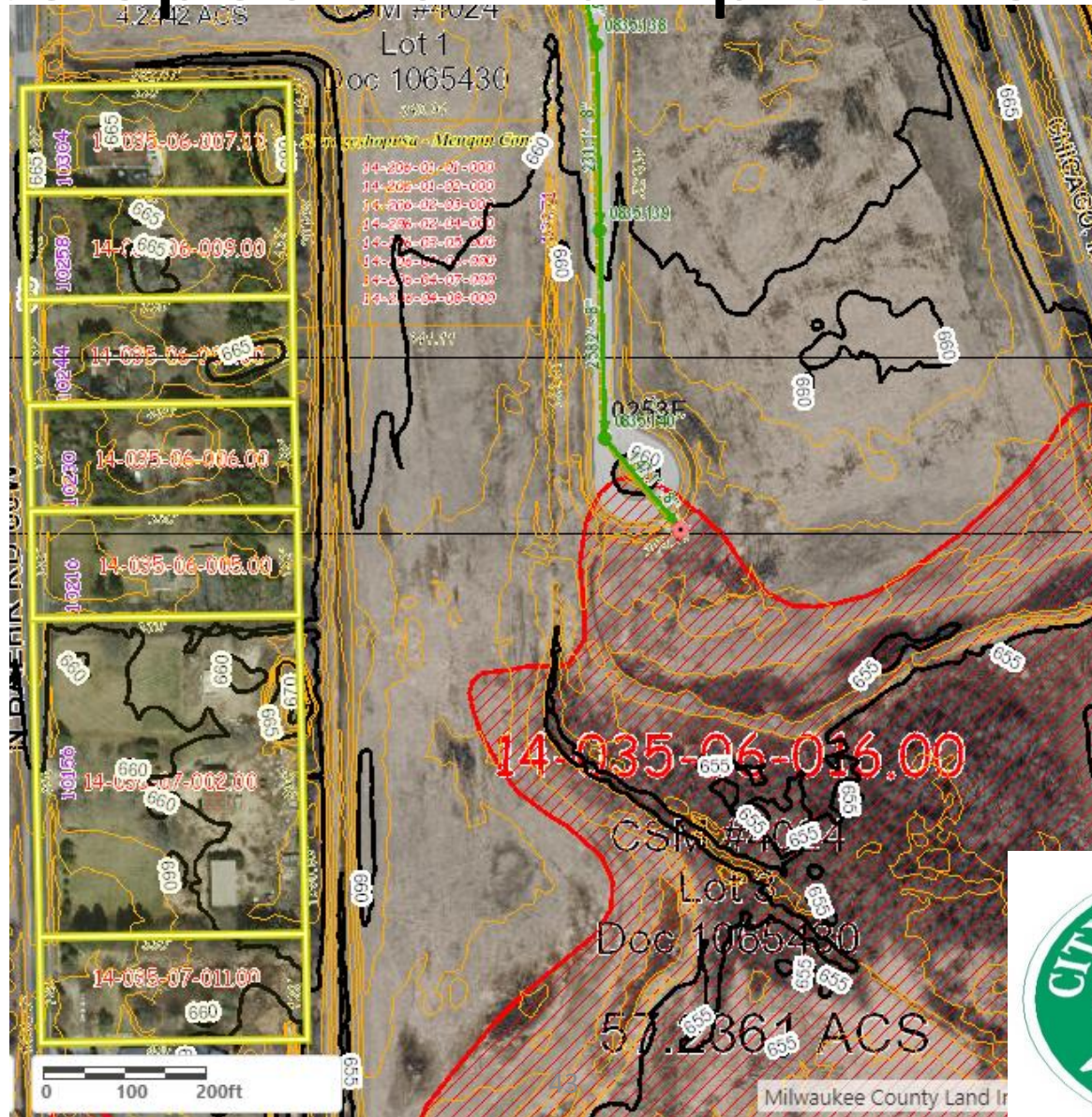


Survey Results - 5.d.5

Baehr Road - Parcels in Resolution 3558

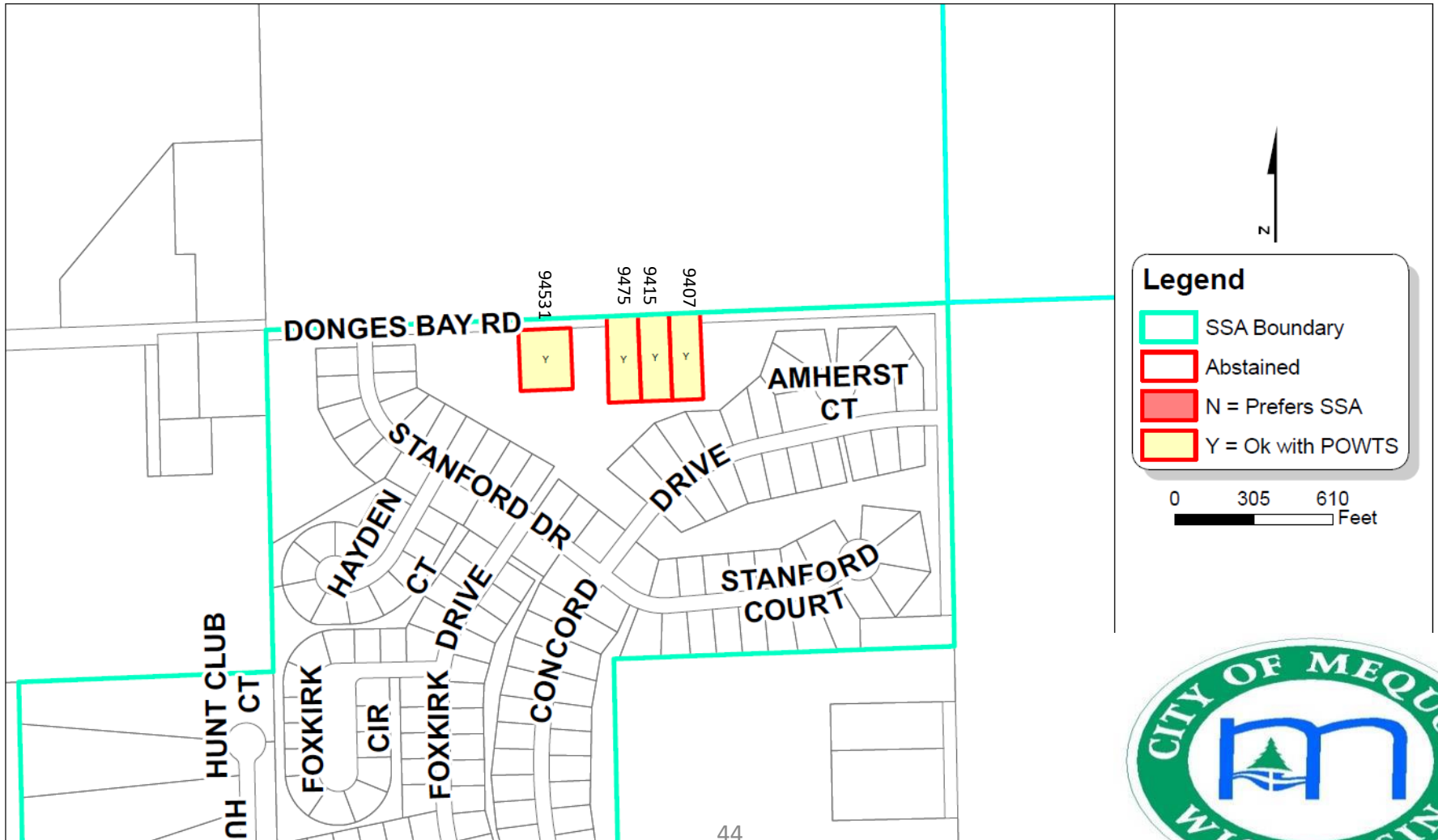


Site Specific Examples – 5.d.5

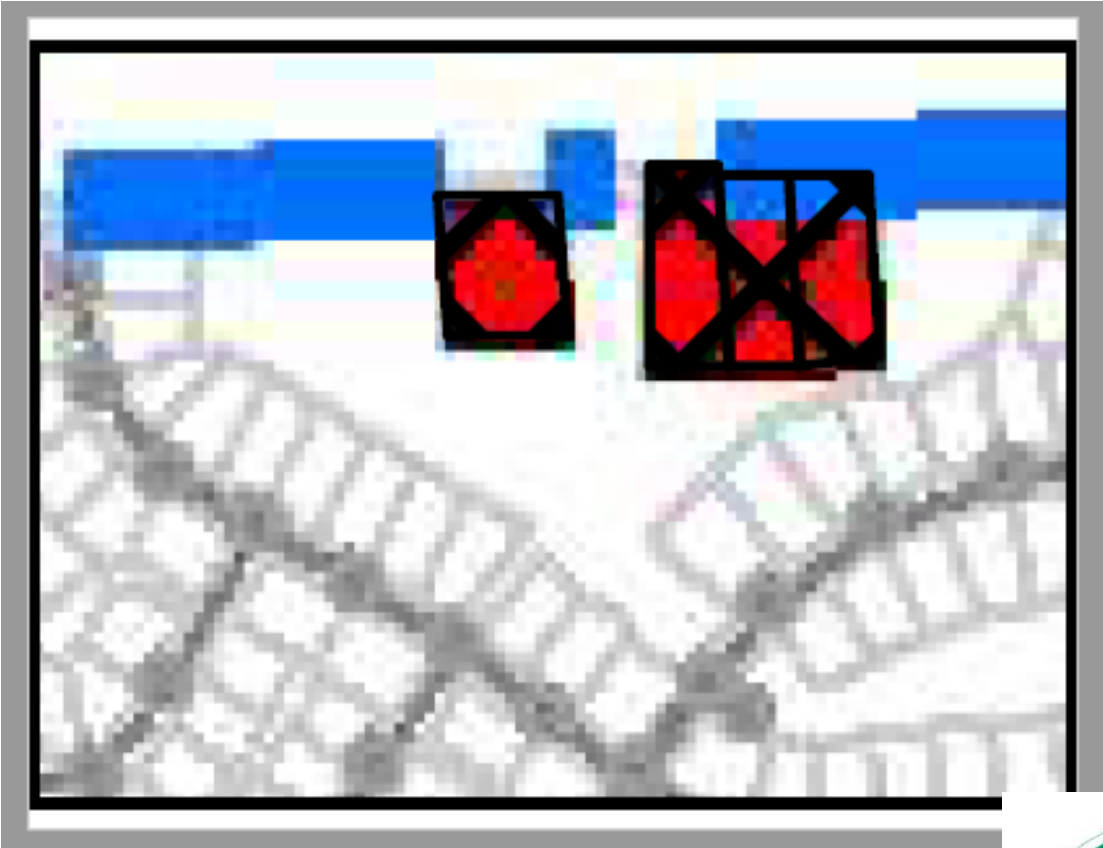


Survey Results - 5.d.6

Donges Bay Road

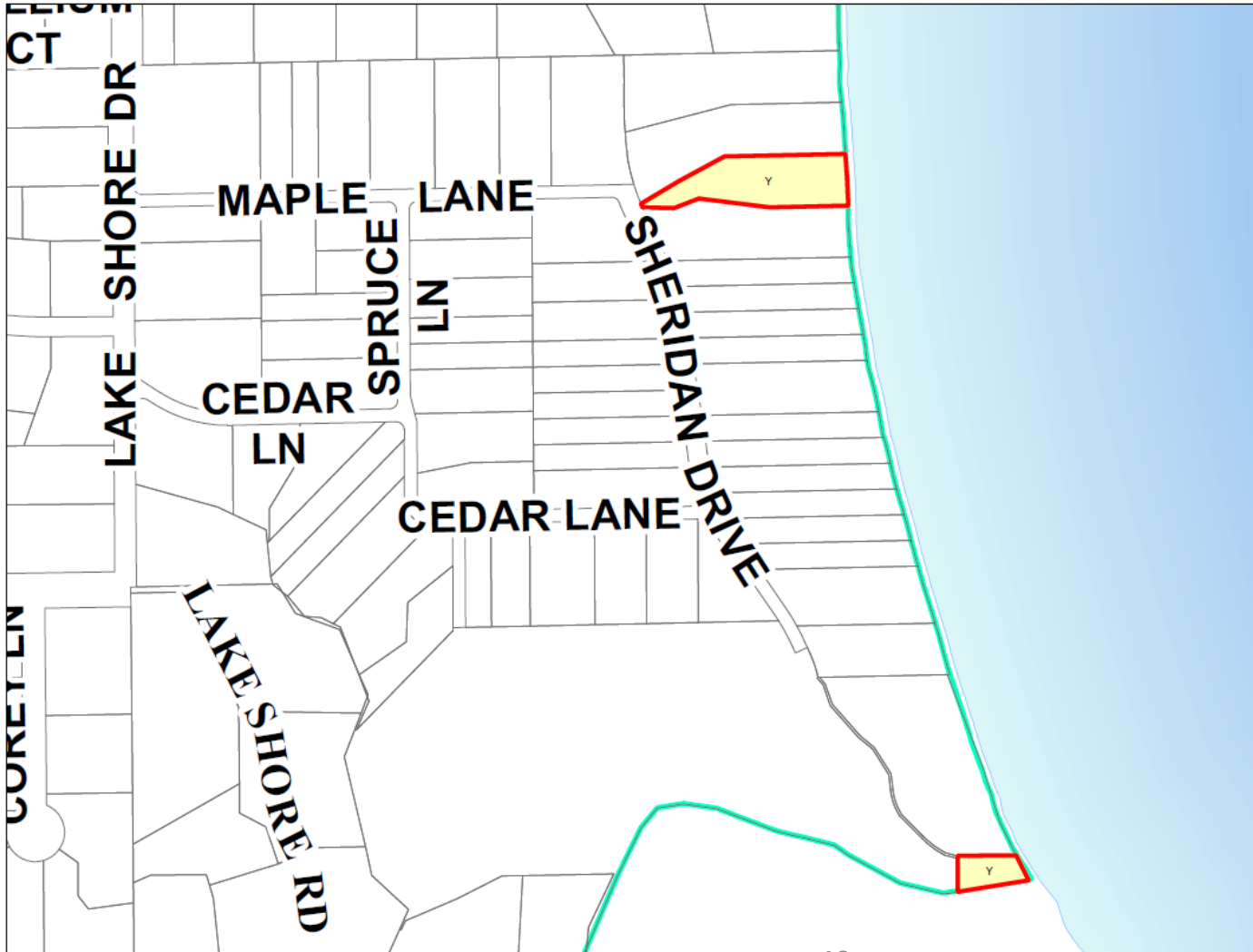


Allowed for Exclusion Map - 5.d.6



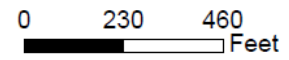
Survey Results

Sheridan Drive

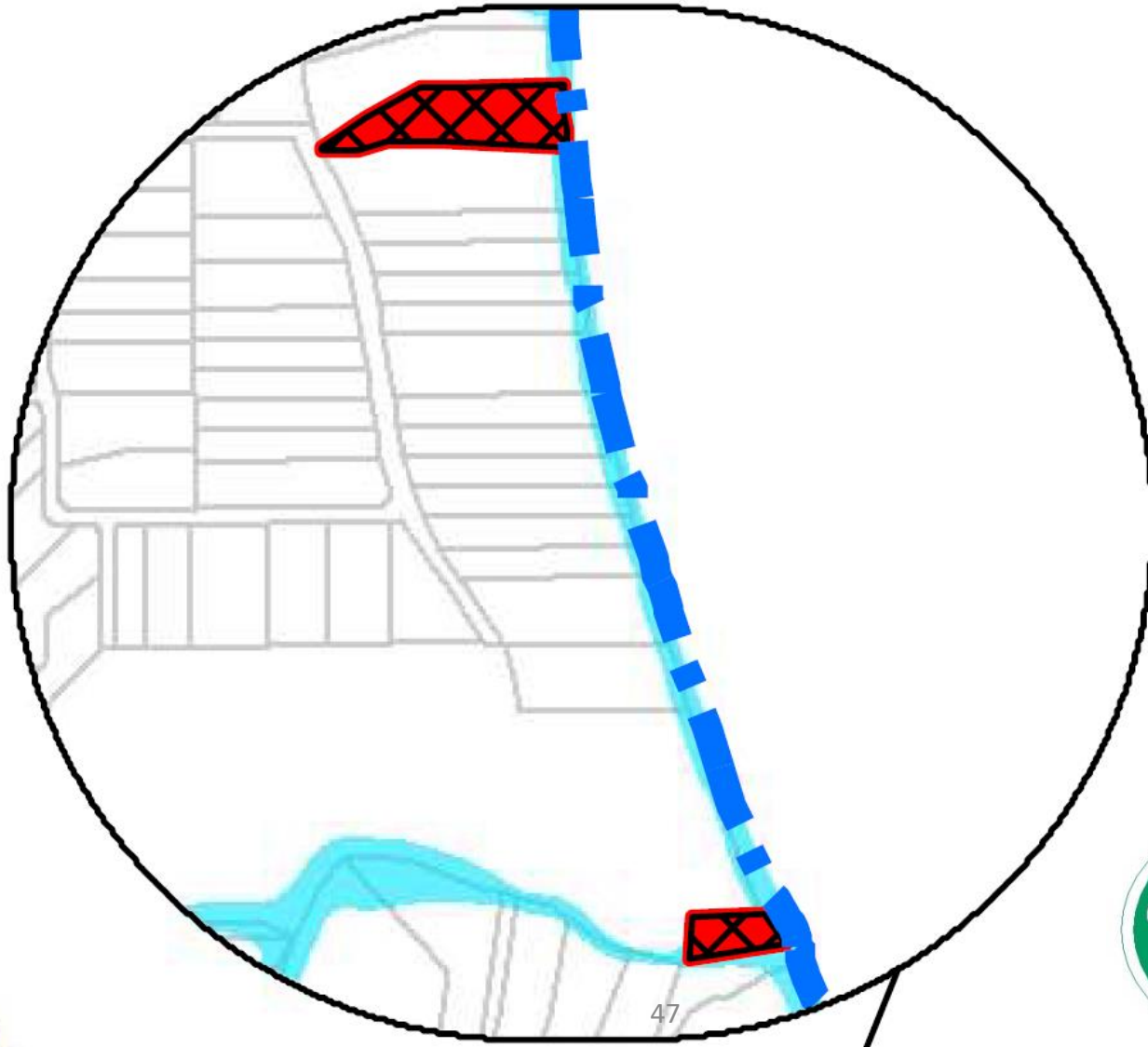


Legend

- SSA Boundary
- Abstained
- N = Prefers SSA
- Y = Ok with POWTS



Allowed for Exclusion Map



Sewer Service Area Amendment

- A sewer service area (SSA) amendment takes approximately 6 to 9 months
- Requires approvals by the City of Mequon Sewer Utility District Commission (SUDC), Milwaukee Metropolitan Sewerage District (MMSD) and the Southeastern Wisconsin Regional Planning Commission (SEWRPC).



SSA Amendment - Summary (1/2)

- The City of Mequon Sewer Utility District Commission (SUDC) and Common Council recently approved Resolution 3558 to exempt certain properties from associated charges.
- Those Certain Properties are eligible to be exempt from future sewer charges via removal from the Sanitary Sewer Service Area.



SSA Amendment - Summary (2/2)

- Next Steps include petitioning Southeastern Wisconsin Regional Planning Commission (SEWRPC) and Milwaukee Metropolitan Sewer District (MMSD) for removing properties from the Sanitary Sewer Service Area, and requiring private systems.
- Establish policy for any exemptions for parcels not removed

