



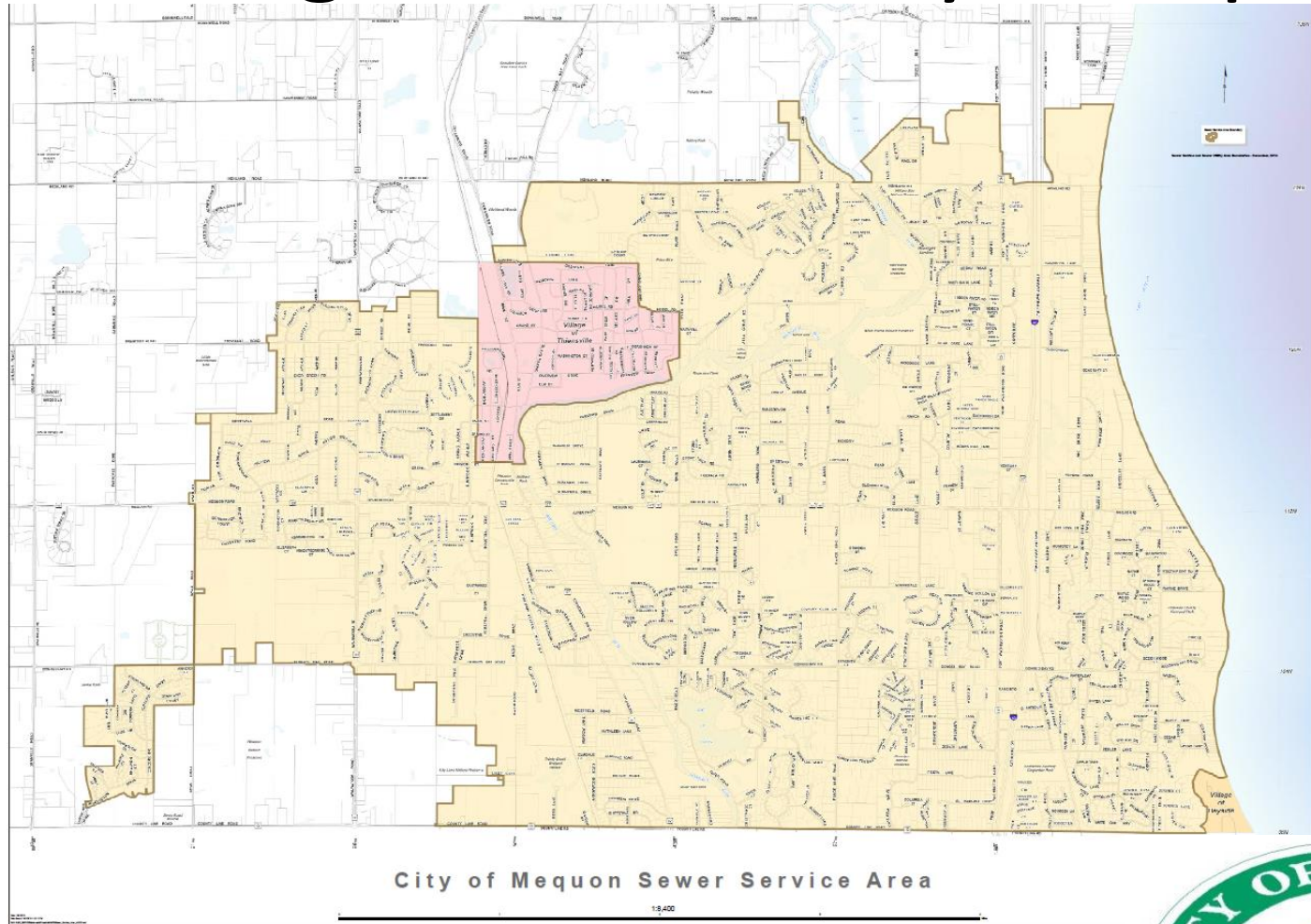
Public Information Meeting on Sewer Service Area Amendment

City of Mequon

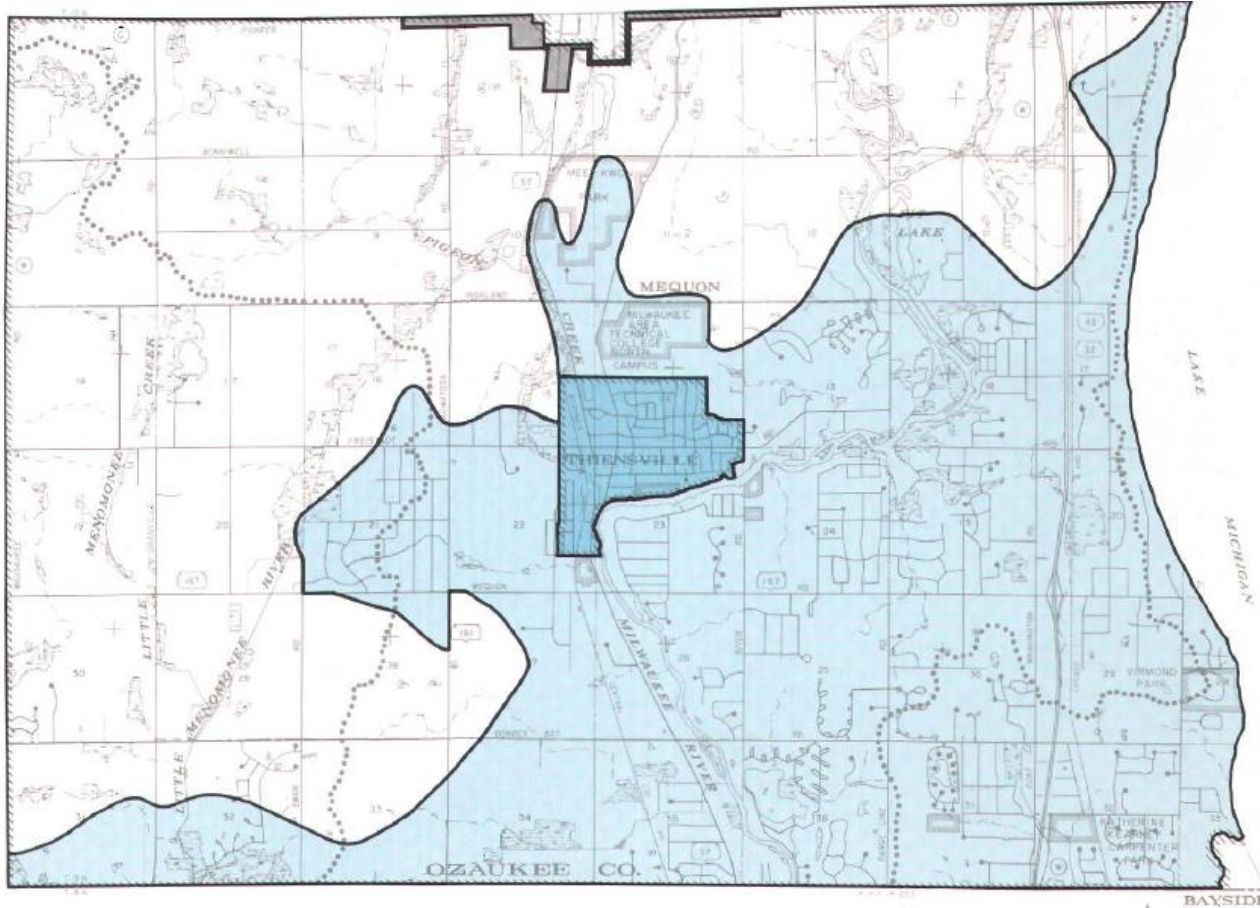
Department of Public Works

Wednesday, January 9, 2019

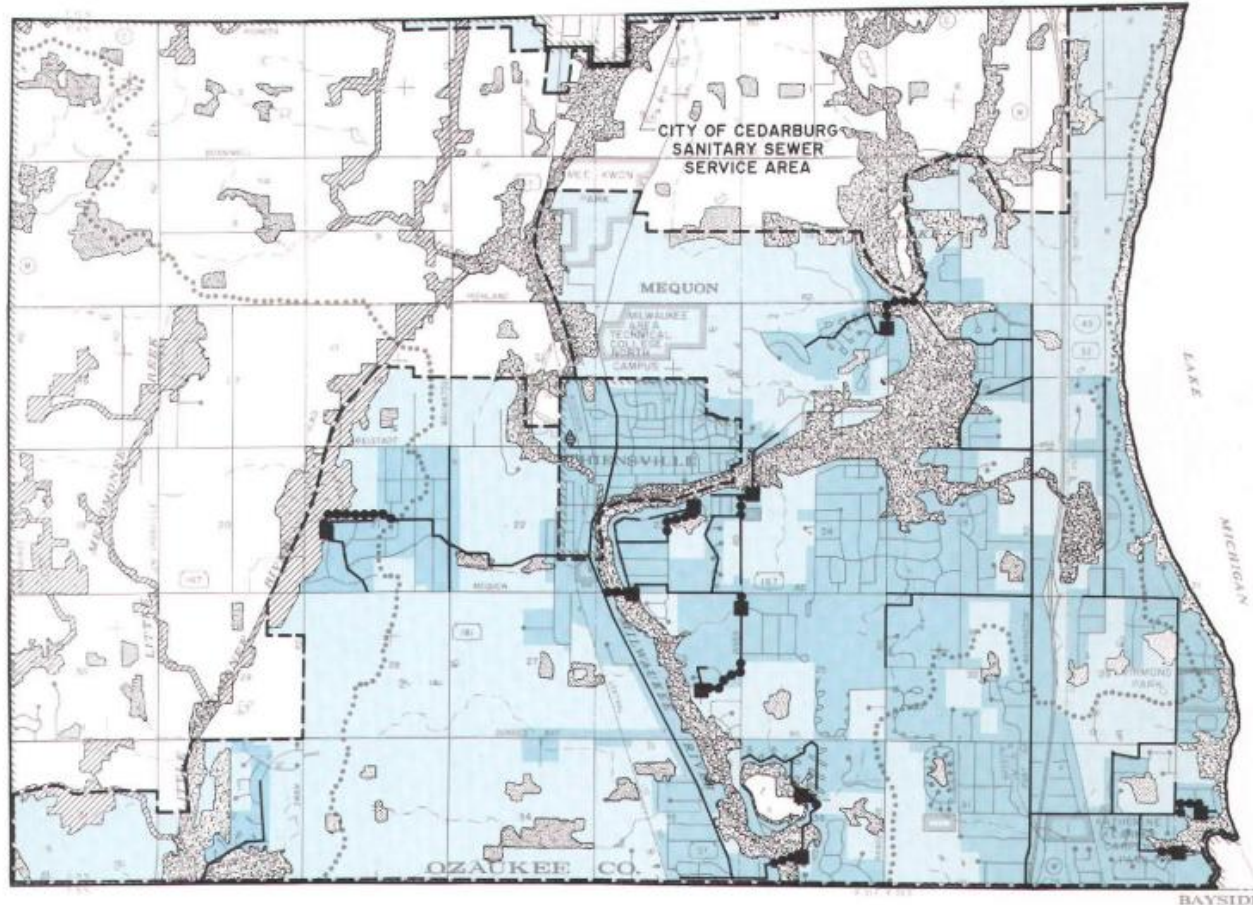
Background – Today's Map



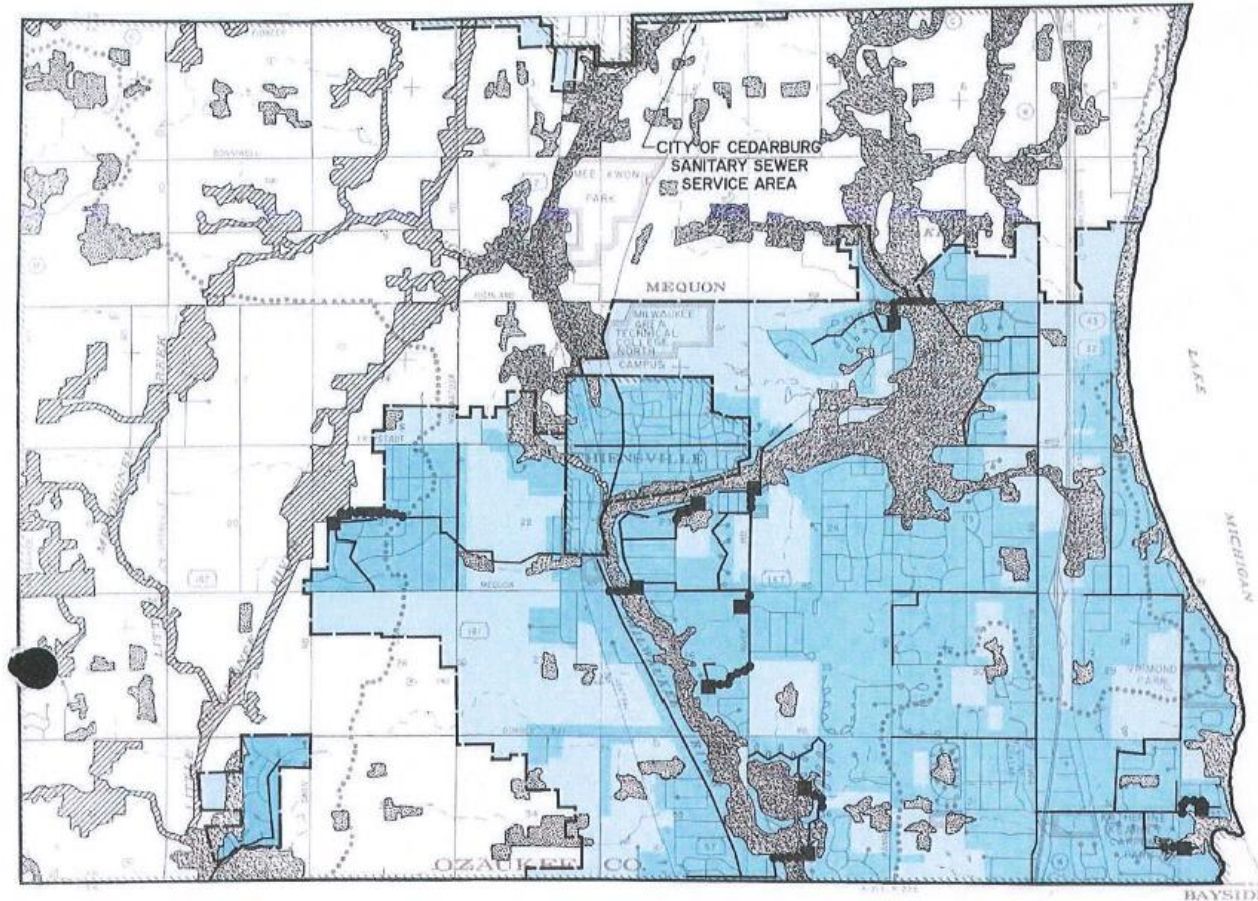
Background – Historical Map 1979



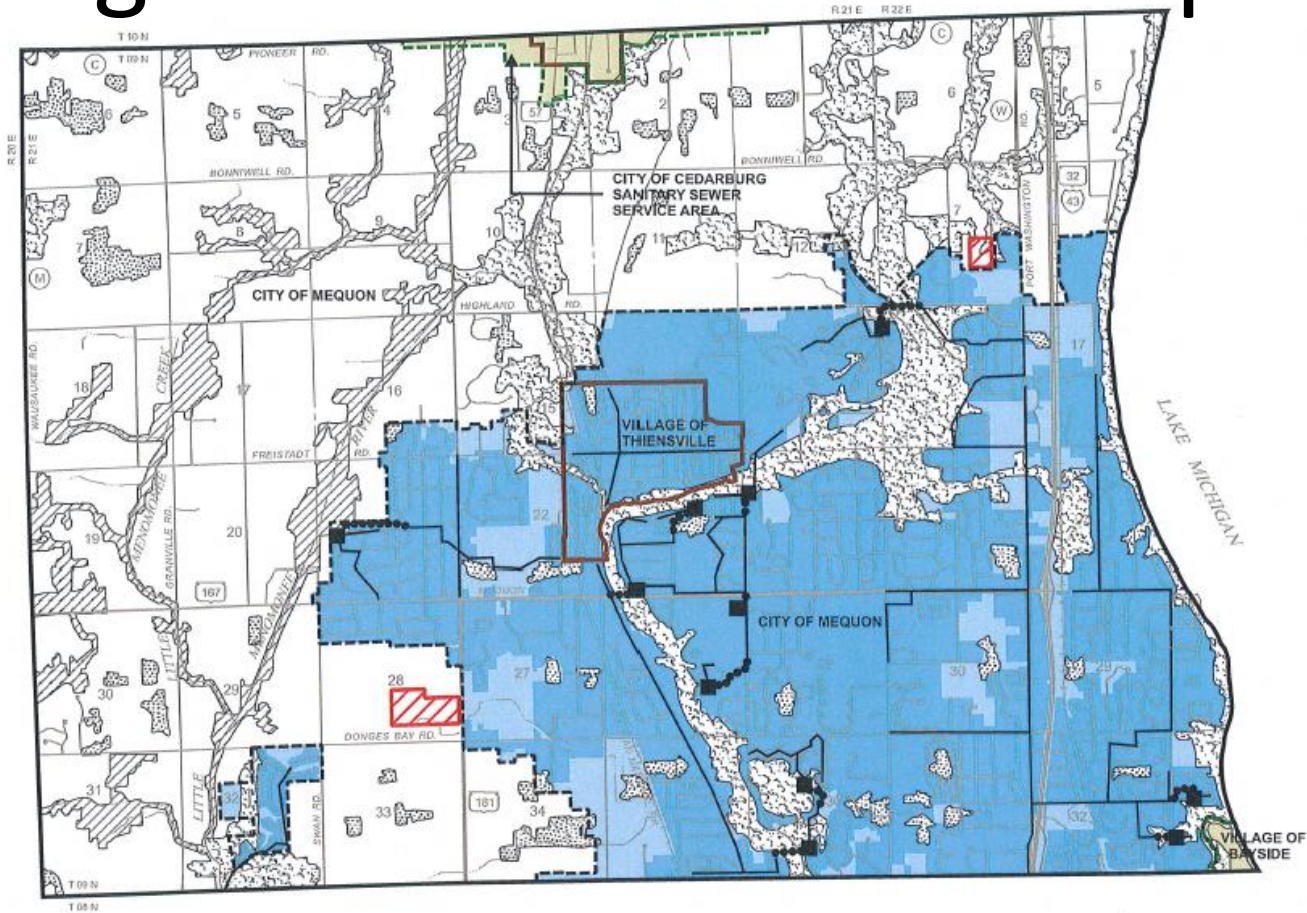
Background – Historical Map 1992



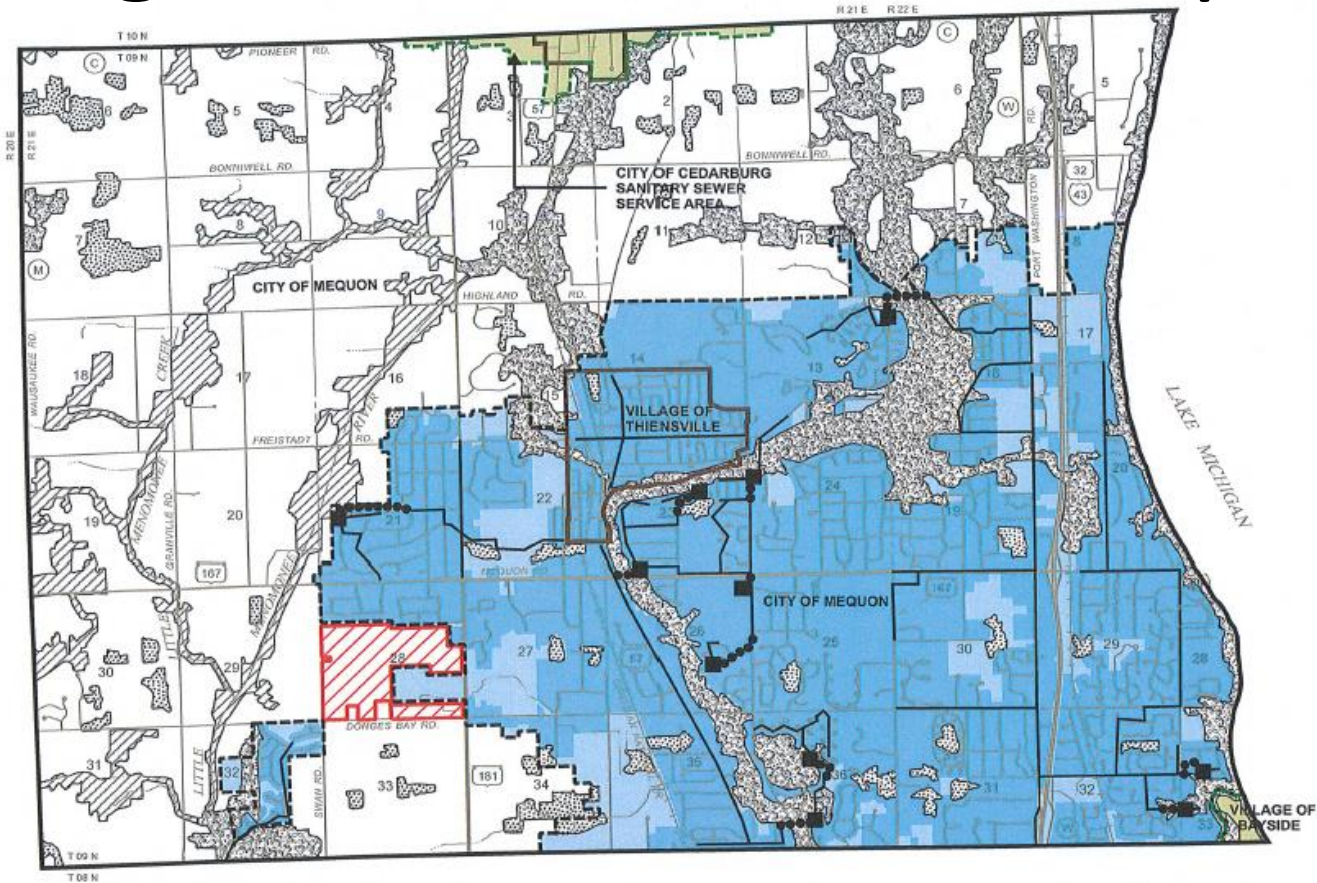
Background – Historical Map 1995



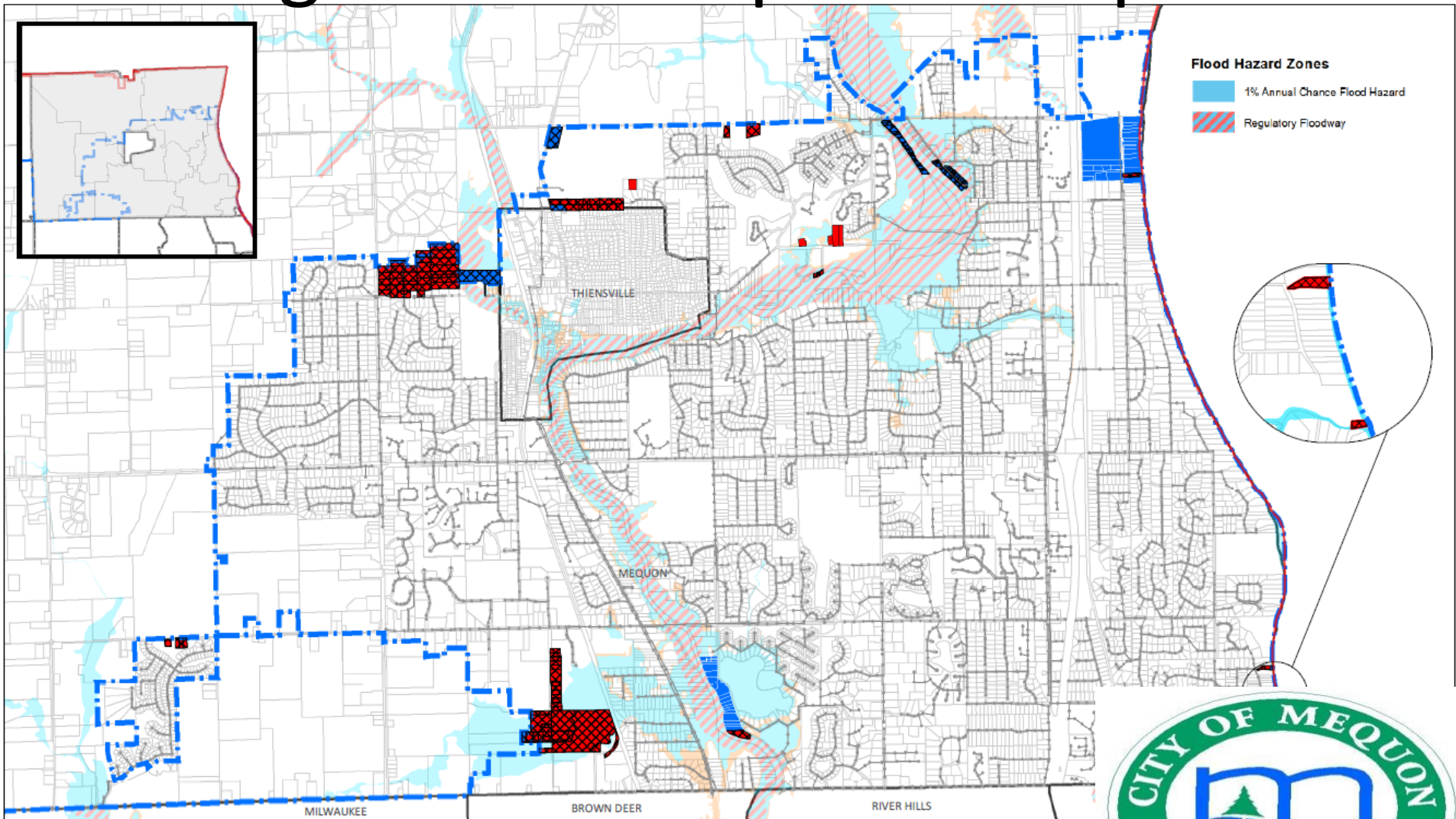
Background – Historical Map 2006



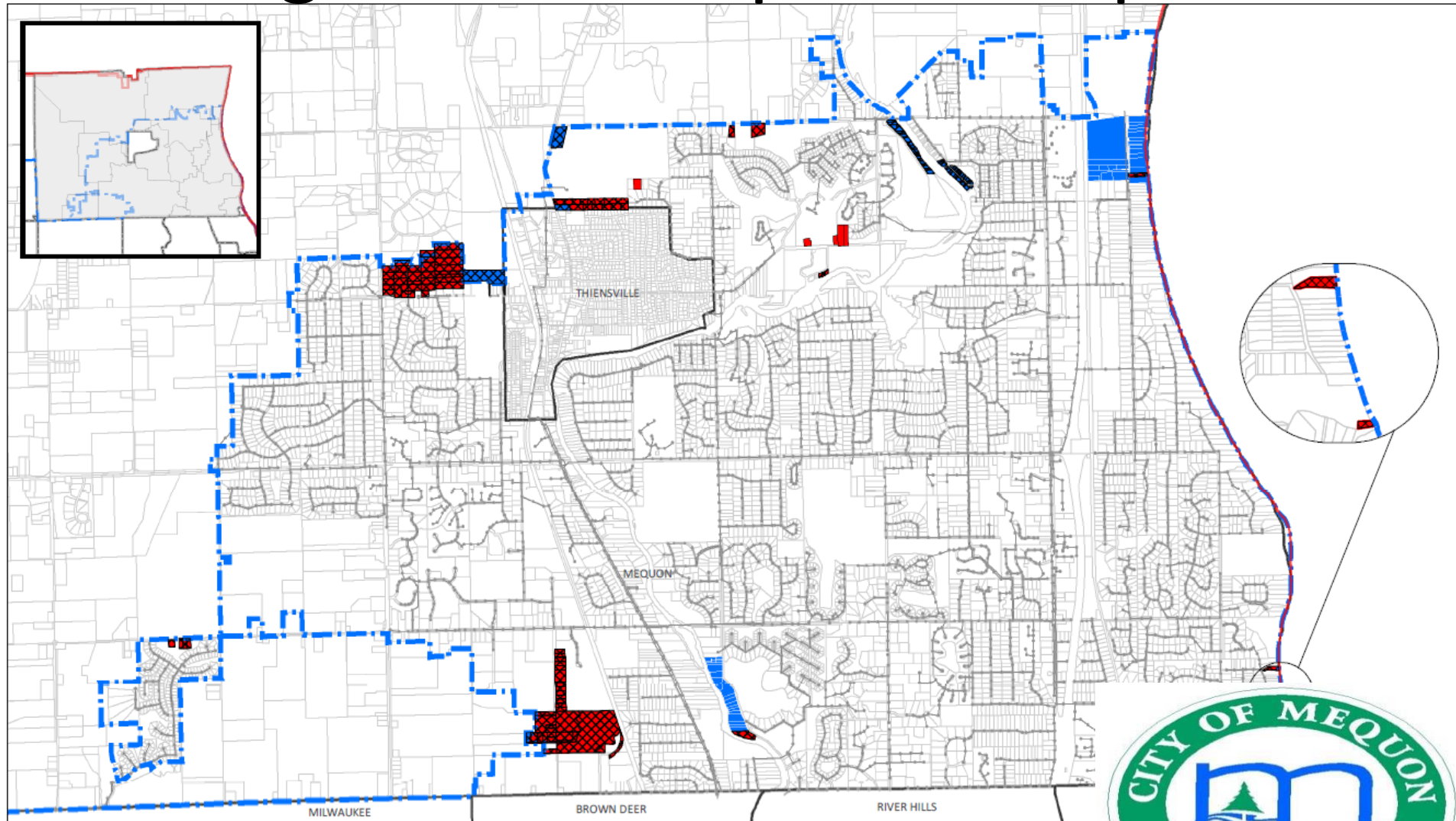
Background – Historical Map 2014



Background – Proposed Map 2019



Background – Proposed Map 2019



Sewer Service Area Amendment

- Amendment to take place prior to the issuance of tax bills in 2019.
- For 2018, only the property owners were exempted from payment, not the utility.
- The rest of the utility rate payers “carried” those exempted.
- We do not anticipate offering the same for 2019, therefore the process must be complete.



Sewer Service Area Amendment

- A sewer service area (SSA) amendment takes approximately 6 to 9 months
- Requires approvals by the City of Mequon Sewer Utility District Commission (SUDC), Milwaukee Metropolitan Sewerage District (MMSD) and the Southeastern Wisconsin Regional Planning Commission (SEWRPC).



Background - Basis for Change

- Assessor's Database Coding
- Finance Department Exemption
- Common Council Resolution



Background – Common Council

- Resolution 3506 - A Resolution Establishing a Policy for Exempting Properties from the City of Mequon Sewer Tax District (3/18)
- Resolution 3558 - A Resolution Exempting Certain Properties from Capital Charges Levied by the MMSD (9/18)



Background – Resolution 3558

- If any of the properties listed (in Res 3558)
 - connect to the public sanitary sewer, or
 - request to be added into the SSA, or
 - request to remain within the SSA,They shall be subject to all capital charges for that property starting with the 2018 tax roll.



Background – Resolution 3558

- All properties within the Sewer Utility District shall assume the cost for the annual Mequon Sewer Tax District charges attributable to sanitary sewer service.



Sewer Exemption Form - Survey

- **YES** The property owner prefers to be removed from the Sanitary Sewer Service Area and not be in the City Sewer Tax District
- **NO** The property owner would prefer the opportunity to remain in the Sanitary Sewer Service Area and incur Sewer Utility Tax District charges.



Sewer Exemption Survey Form

- **YES** The property owner prefers to be removed from the Sanitary Sewer Service Area and not be in the City Sewer Tax District



Sewer Exemption Form - Yes

- The property will become exempt from the City of Mequon Sewer Tax District and any associated charges.
- The property will continue to use a private onsite wastewater treatment system.
- The property will not be allowed to connect to the sanitary sewer system in the future, without a sewer service area amend



Sewer Exemption Form - Survey

- **NO** The property owner would prefer the opportunity to remain in the Sanitary Sewer Service Area and incur Sewer Utility Tax District charges.



Sewer Exemption Form - No

- The property could remain in the Sanitary Sewer Service Area and incur City Sewer Utility Tax District charges.
- The property would be eligible to connect to the sanitary sewer system when the septic or mound system or holding tanks fails.
- However, currently there may not be access to a public main.



Sewer Exemption Form - No

- The property would need to pay previous and future charges, including re-payment of 2018 Mequon Sewer Tax District charges.
- Exemption would be revoked.
- The back charges for this property would not include the cost to construct private plumbing and/or a building sewer lateral from the public sanitary sewer main in City right-of-way, if one were ever to be constructed.



SSA Amendment - Summary (1/4)

- You have received an exemption for the 2018 charges by the City of Mequon Sewer Tax District.
- Your property is eligible to be exempt from future sewer charges via removal from the Sanitary Sewer Service Area.



SSA Amendment - Summary (2/4)

- The City of Mequon Sewer Utility District Commission (SUDC) and Common Council recently approved Resolution 3558 to exempt certain properties from associated charges including your parcel.
- The next steps are to confirm your preference to incur future charges and remain in, or be removed out of the Mequon Sewer Tax District and Sewer Service Area.



SSA Amendment - Summary (3/4)

- The subsequent steps would include petitioning Southeastern Wisconsin Regional Planning Commission (SEWRPC) and Milwaukee Metropolitan Sewer District (MMSD) for removing your property from the Sanitary Sewer Service Area, and requiring installation of a private system.



SSA Amendment - Summary (4/4)

- As a result, a septic mound or holding tank may be the only reasonable or feasible alternative to service your lot because of access to the nearest sanitary sewer.



Timeframe

- Survey Forms Due
January 16, 2019
- Additional Public Information Meeting(s)
Required?



Questions

Kevin R. Driscoll, P.E.

Deputy Director of Utilities

City of Mequon

11333 N. Cedarburg Road

Mequon, WI 53092

kdriscoll@ci.mequon.wi.us

262-236-2937

