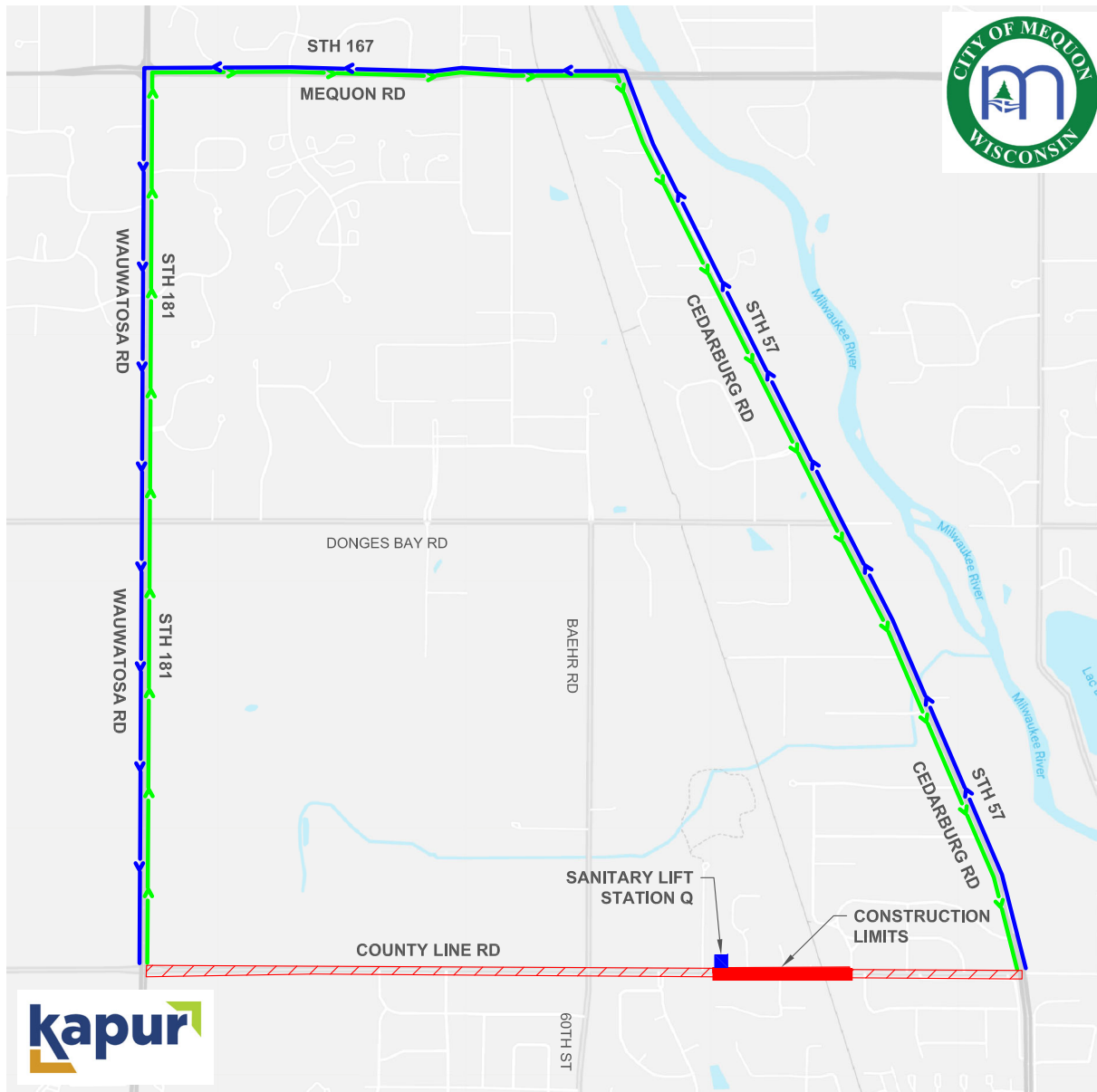


COUNTY LINE ROAD LIFT STATION Q SANITARY FORCE MAIN REPLACEMENT



- SEWER WORK WILL REQUIRE THE CLOSURE OF THE WESTBOUND LANE OF COUNTY LINE ROAD WHERE IT CROSSES THE RAILROAD
- FOR EASE OF DETOUR ROUTES, COUNTY LINE ROAD WILL BE CLOSED IN BOTH DIRECTIONS TO THROUGH TRAFFIC BETWEEN STH 181 AND STH 57
- THE COUNTY LINE ROAD DETOUR WILL UTILIZE STH 181, STH 167, AND STH 57
- NO TRUCKS ARE ALLOWED ON BAEHR ROAD IN MEQUON, 60TH ST IN BROWN DEER, OR ANY RESIDENTIAL STREETS
- TRUCKS MUST FOLLOW THE POSTED DETOUR
- MESSAGE BOARDS WILL BE POSTED NEAR THE RAILROAD FOR 7 DAYS PRIOR TO CONSTRUCTION TO NOTIFY DRIVERS OF THE UPCOMING CONSTRUCTION TO ALLOW THEM TO PLAN ACCORDINGLY
- THE EAST BOUND LANE OF COUNTY LINE ROAD WILL REMAIN OPEN FOR EMERGENCY VEHICLES AND LOCAL TRAFFIC

- SANITARY LIFT STATION Q
- CONSTRUCTION LIMITS
- ▨ ROAD CLOSED, LOCAL TRAFFIC ONLY
- EAST COUNTY LINE RD DETOUR
- WEST COUNTY LINE RD DETOUR