

ACKNOWLEDGEMENTS

Park and Open Space Board

Patrick Marchese, *Chair*
Nancy Urbani, *Vice-Chair*
Kay Amland
Joe Branch
Jason Cain
John Lhost
James Lysaught
Gerald Vite
Mark Gierl, *Alternate*
Geoff Hurtado, *Alternate*
Anton Usowski, *Alternate*

Common Council

John Wirth, *Mayor*
Dan Abendroth, *Former Mayor*
Robert Strzelczyk, *District 1*
Glenn Bushee, *District 2*
Dale Mayr, *District 3*
John Wirth, *District 4*
Mark T. Gierl, *District 5*
Brian Schneider, *District 6*
Kathleen Schneider, *District 7*
Andrew Nerbun, *District 8*

Planning and Design Assistance

Ayres Associates
5201 East Terrace Drive, Suite 200
Madison, WI 53718
608.443.1200
www.ayresassociates.com





TABLE OF CONTENTS

I. Introduction	1
II. Existing Facilities	2
Observed Issues (Site Audits)	4
III. Public Process	10
Stakeholder Interviews.....	10
Mequon Park & Open Space Survey.....	14
Public Meeting	15
Analysis of Data Collected	15
IV. Lemke Park Master Plan Recommendations	19
V. River Barn Park Master Plan Recommendations	22
VI. Rotary Park Master Plan Recommendations	24
VII. Future Park Expansions.....	26
VIII. Phasing Plans.....	27
IX. Preliminary Budget	30

Appendices

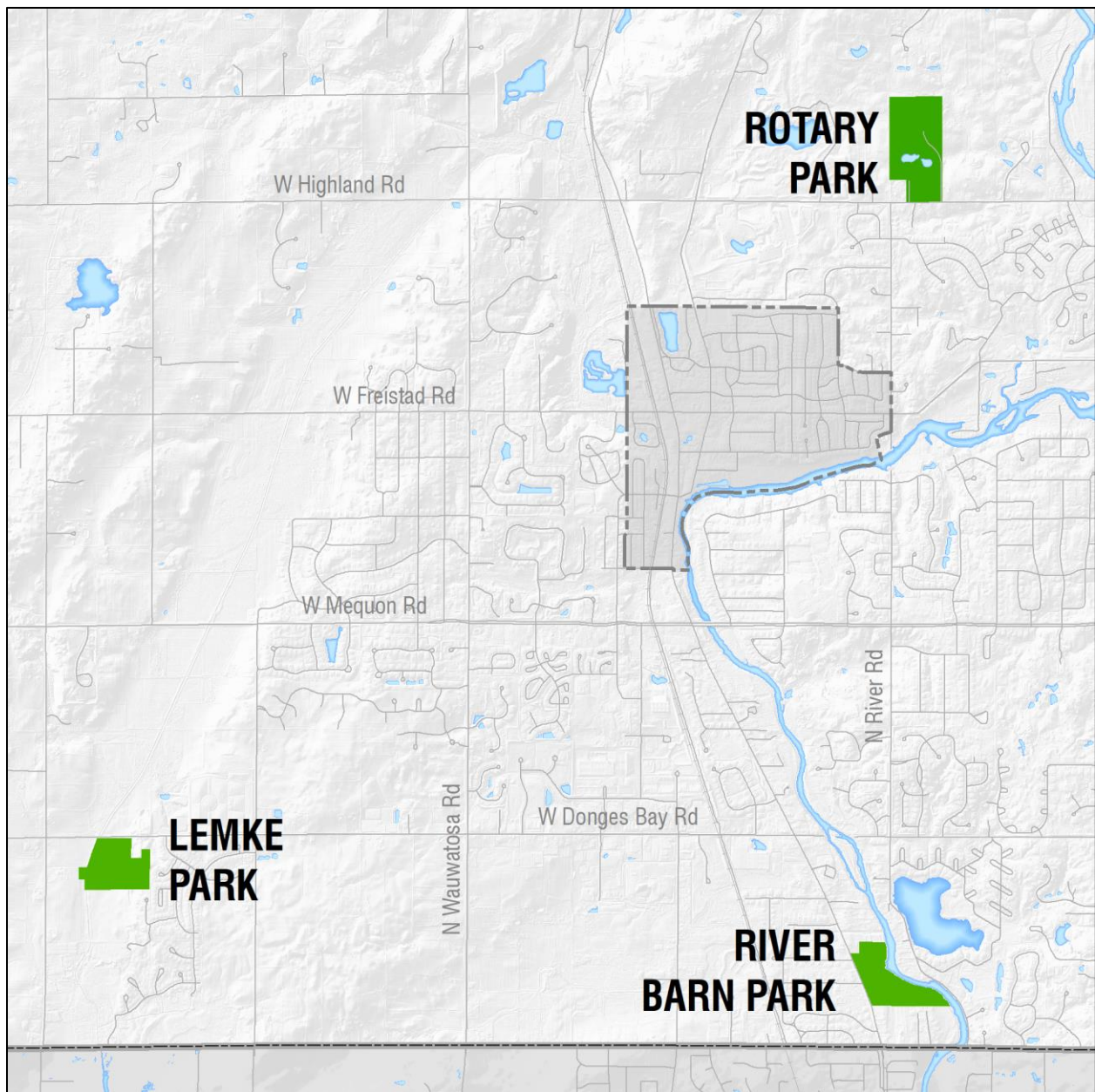
- Appendix A: Construction Cost Estimates
- Appendix B: Concept Plans – Lemke Park
- Appendix C: Concept Plans – River Barn Park
- Appendix D: Concept Plans – Rotary Park
- Appendix E: Preferred Concept Plans – Lemke Park, River Barn Park & Rotary Park
- Appendix F: Phasing Plans

Master Plan for Lemke Park, River Barn Park & Rotary Park Mequon, WI

I. INTRODUCTION

The following memorandum summarizes the process, findings and recommendations of the Master Plan for Lemke Park, River Barn Park and Rotary Park in Mequon, Wisconsin. Exhibits referenced in this report are attached at the end of the document (**Appendix A-F**). While these three parks have independent and unique identities and roles for the community, the analysis and planning was an overlapping process. This report outlines the commonalities and specific recommendations for each site. It should be noted that implementation of each park will be independent of each other, but there are certain pieces of the proposed plans that rely on implementation of recommendations from the other sites.

Site Locations



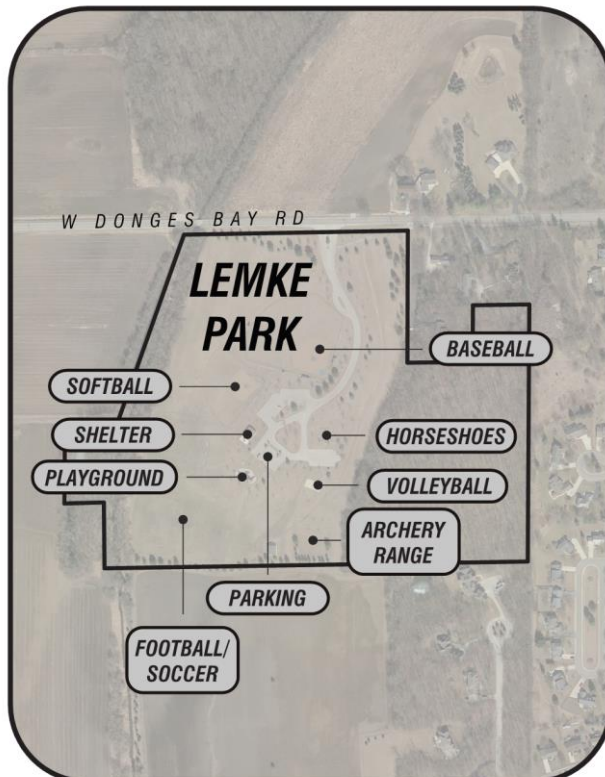


II. EXISTING FACILITIES

Site audits of each of the three parks were completed in conjunction with the 2019 City of Mequon Park and Open Space Plan. Facilities were photo inventoried and any issues pertaining to safety, ADA accessibility, equipment age, and several other factors were documented. Maps on the following pages show existing facilities at each of the parks and are accompanied by a comprehensive list of amenities provided. The following section details issues observed during site audits.

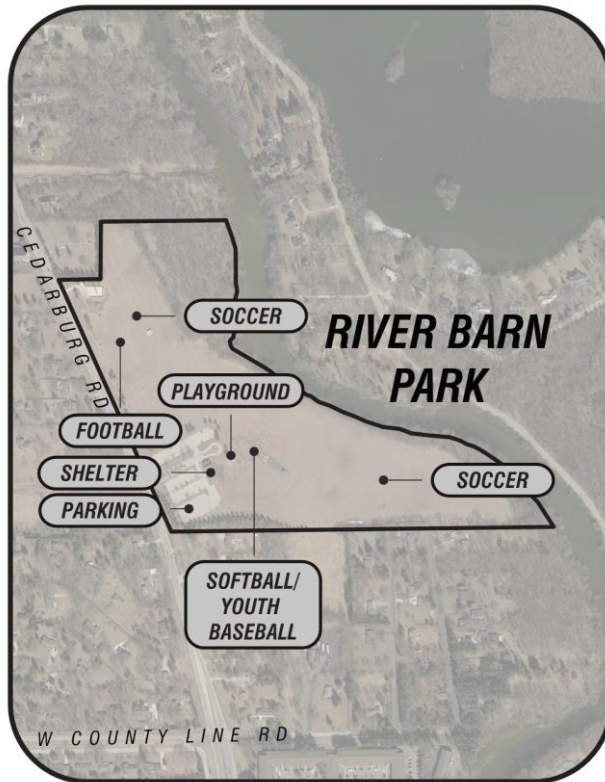
LEMKE PARK

10301 W Donges Bay Road 104N



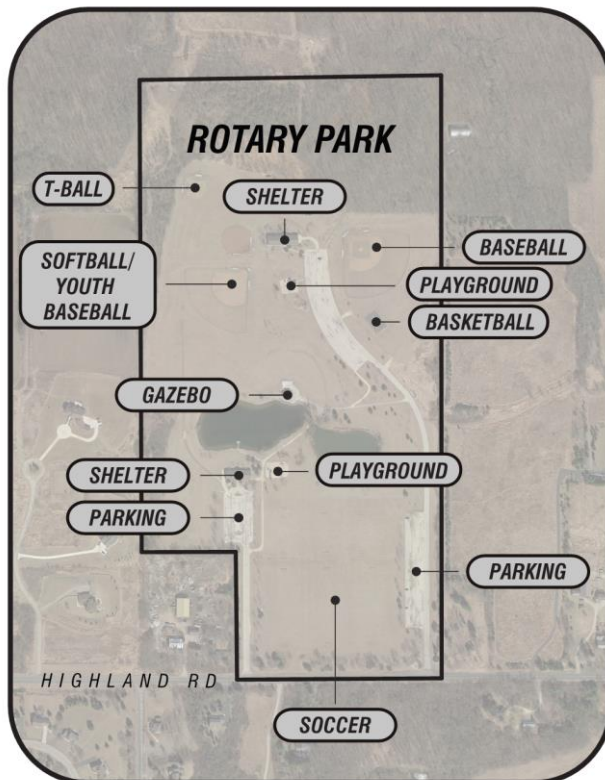
EXISTING FACILITIES:

- Baseball field with dugouts, bleachers & scoreboard
- Softball/youth baseball field with dugouts & scoreboard
- Batting cages
- Athletic fields (Football, soccer & lacrosse)
- Park shelter
- Football equipment storage building
- Archery range
- Sand volleyball court
- Horseshoe pits
- Basketball hoop (in parking lot)
- Play structure (5-12 year old)
- Swings (2 belt, 2 bucket)
- Sandbox
- Grill
- Open space
- Natural area
- Asphalt path
- Parking lots
- Bike rack
- Equipment sheds
- Port-a-pottys
- Picnic tables
- Benches
- Trash receptacles
- Dog waste station
- Park sign
- Regulatory signage



EXISTING FACILITIES:

- Softball/youth baseball fields with bleachers (3)
- Athletic fields (Football, soccer & lacrosse)
- Sommer Pavilion (Indoor/outdoor shelter with concessions & restrooms)
- Batting cage
- Large bleachers at football field
- Football scoreboard
- Play structure (5-12 year old)
- Swings (3 belt, 1 bucket)
- Equipment shed
- Canoe/kayak launch
- Natural area
- Parking lot
- Bike rack
- Park sign
- Trash receptacles
- Picnic tables
- Grill
- Drinking fountain

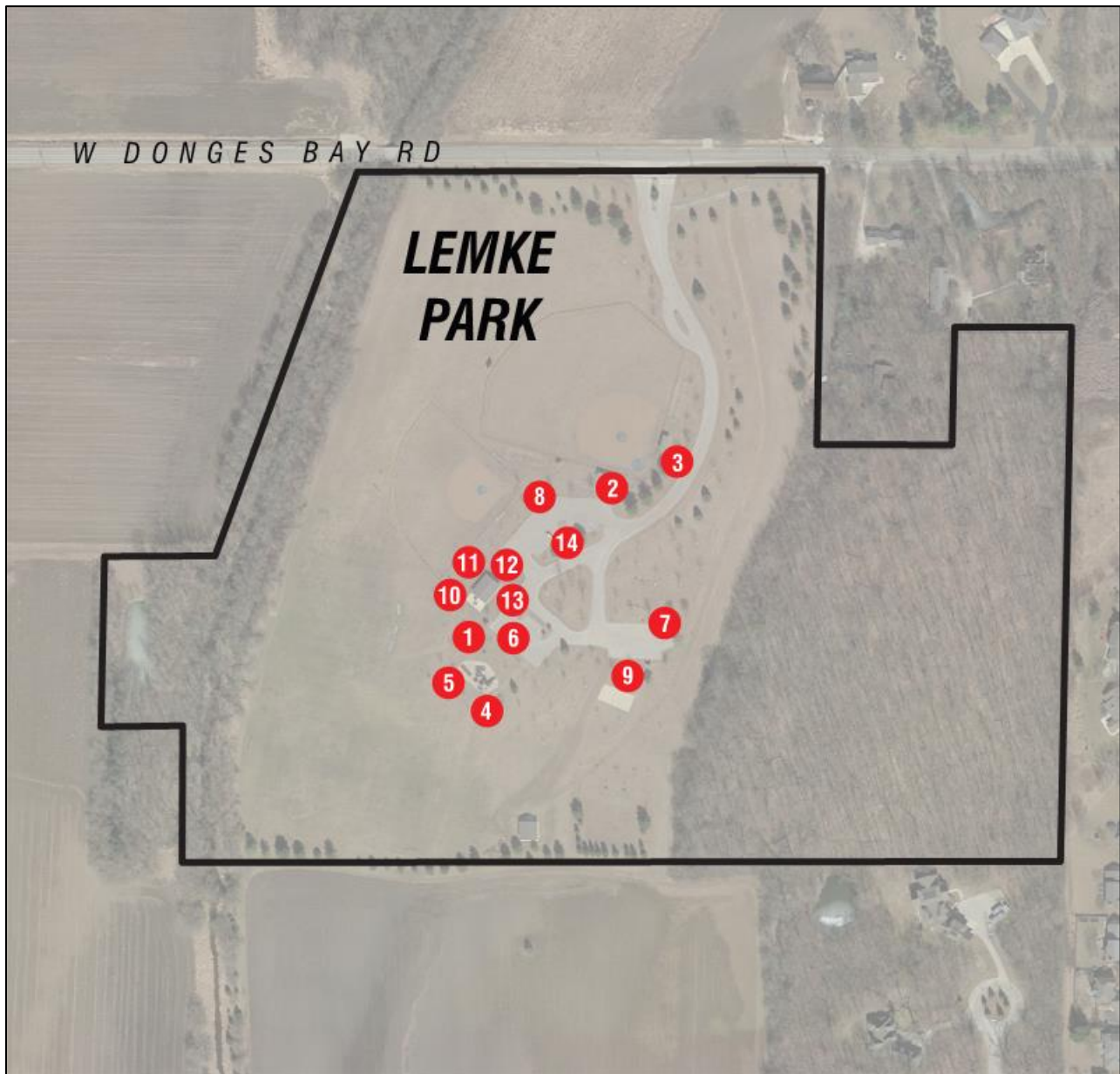


EXISTING FACILITIES:

- Rueter Pavilion (Indoor pavilion with restrooms)
- Rotary Pavilion (Outdoor pavilion with restrooms and concessions)
- Large shelter/amphitheater stage with electrical
- Schmit Field (Baseball field with bleachers)
- 2 – Softball/youth baseball fields with bleachers (Lions Fields)
- T-Ball field
- Batting cage
- Athletic fields (Soccer & lacrosse)
- Basketball court
- Gravel paths
- Asphalt path
- Natural area connecting to Pukaite Woods
- Kiosks
- Memory Garden
- North playground
- South playground
- Parking lots
- Parking lot lighting
- Fishing pond
- Fishing pier
- Donor monuments
- Bridge
- Drinking fountain (Missing for winter)
- Grill
- Picnic tables
- Trash receptacles
- Flagpole
- Park signs
- Regulatory signage
- Lions Fields sign
- Schmit Field sign
- Pukaite Woods sign
- Memory Garden sign

OBSERVED ISSUES (SITE AUDITS)

LEMKE PARK



Observed Issue (Site audits)

- | | |
|---|-----------------------------------|
| 1. No ADA accessibility to park facilities | 8. Bike rack in grass |
| 2. Missing endcaps on bleachers | 9. No picnic table near grill |
| 3. Bleachers should be on concrete pads | 10. No ADA approved picnic tables |
| 4. Some worn areas on playground safety surfacing | 11. No recycling receptacles |
| 5. A bucket swing seat is beginning to split | 12. No drinking fountain |
| 6. No ADA parking signage | 13. No permanent restrooms |
| 7. Basketball/parking conflict | 14. No lighting |



Bike rack in grass



No ADA access to shelter



No ADA access to ballfields



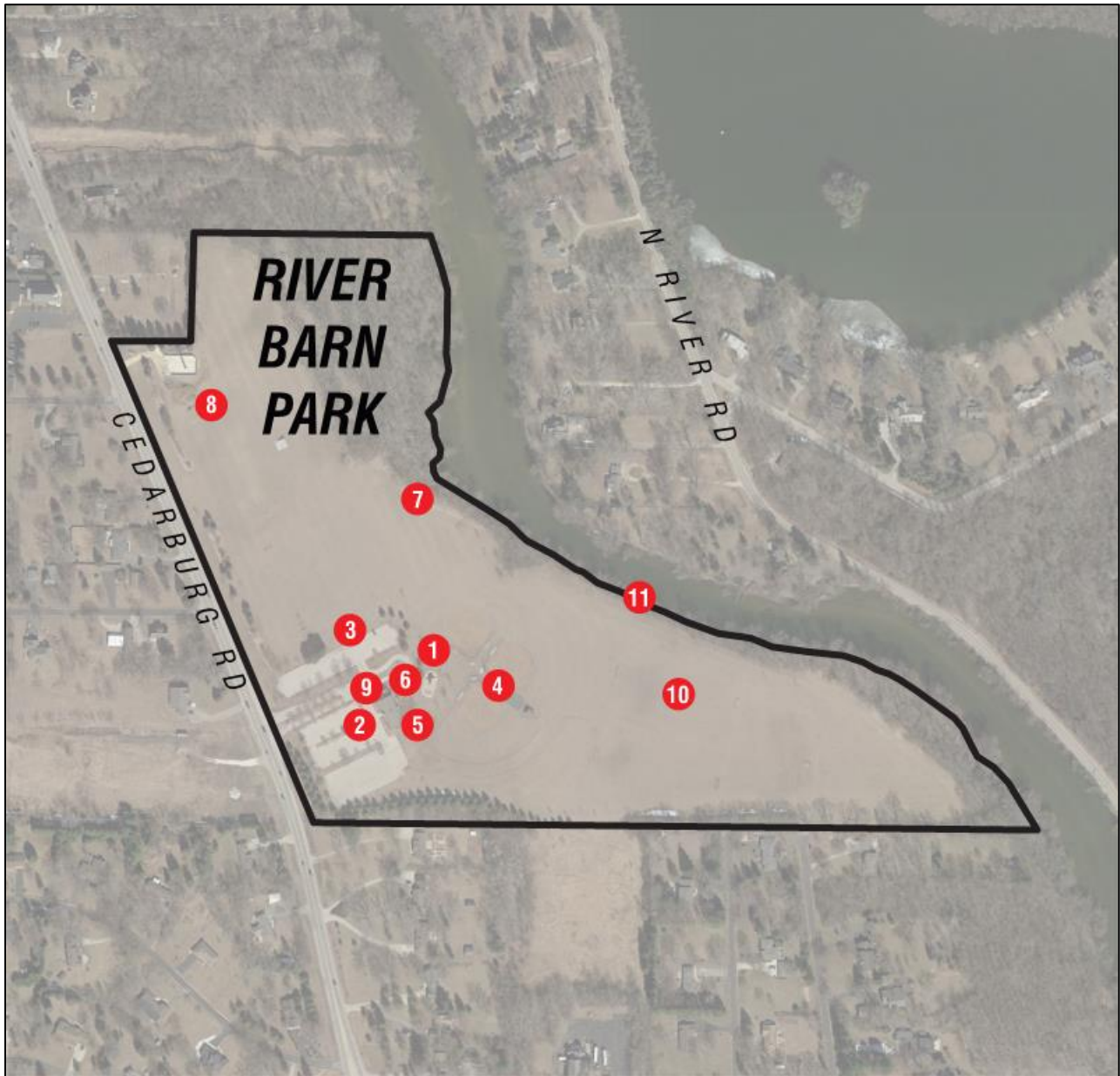
No ADA parking signage



Worn areas in playground surfacing



Basketball/parking conflict



Observed Issue (Site audits)

- | | |
|--|---|
| <ol style="list-style-type: none">1. No ADA accessibility to some park facilities2. No ADA parking pavement marking3. Bike rack is not on a hardscape surface4. Bleachers at ballfields should be on a concrete pad5. No ADA approved picnic tables6. Safety surfacing in playground is aging (Exposed concrete slab) | <ol style="list-style-type: none">7. Dead/dying trees8. Crooked football goalpost9. No recycling receptacles10. Some soccer & lacrosse goals are aging11. No clear river access point or wayfinding to canoe launch |
|--|---|



Dead/dying trees



Bike rack is not on a hardscape surface



No ADA accessibility to playground



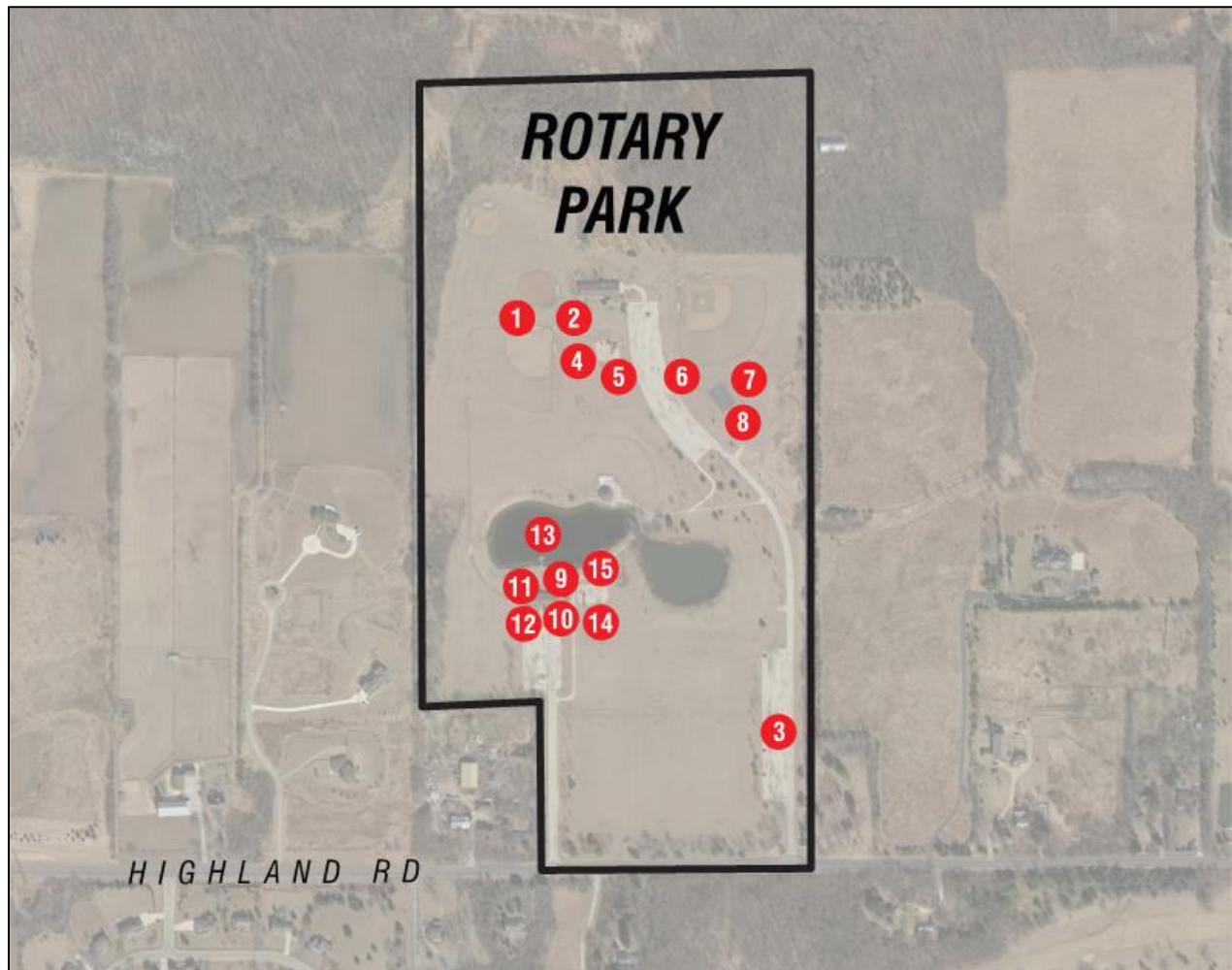
Bleachers not on concrete pads



Some soccer and lacrosse goals are aging



No ADA parking pavement marking



Observed Issue (Site audits)

- | | |
|---|--|
| <ol style="list-style-type: none">1. No ADA accessibility to many park facilities2. Bleachers at the ballfields should be on concrete pads3. Parking lot asphalt is aging in some areas4. North playground safety surfacing is worn5. North playground play structure is aging6. Schmit Field sign is loose in the ground and has holes in it7. Some cracks in the basketball court8. Basketball nets are torn | <ol style="list-style-type: none">9. No ADA approved picnic tables10. No recycling receptacles11. No bike racks12. Missing endcaps on picnic tables in the Rotary Pavilion13. The fishing pier is aging14. The play structure in the south playground is aging15. The bridge on the play structure in the south playground has potential pinch point |
|---|--|



Bleachers should be on a concrete pad



Aging safety surfacing at north playground



Schmit Field sign is damaged



Basketball nets are torn



No ADA approved picnic tables



The fishing pier is aging

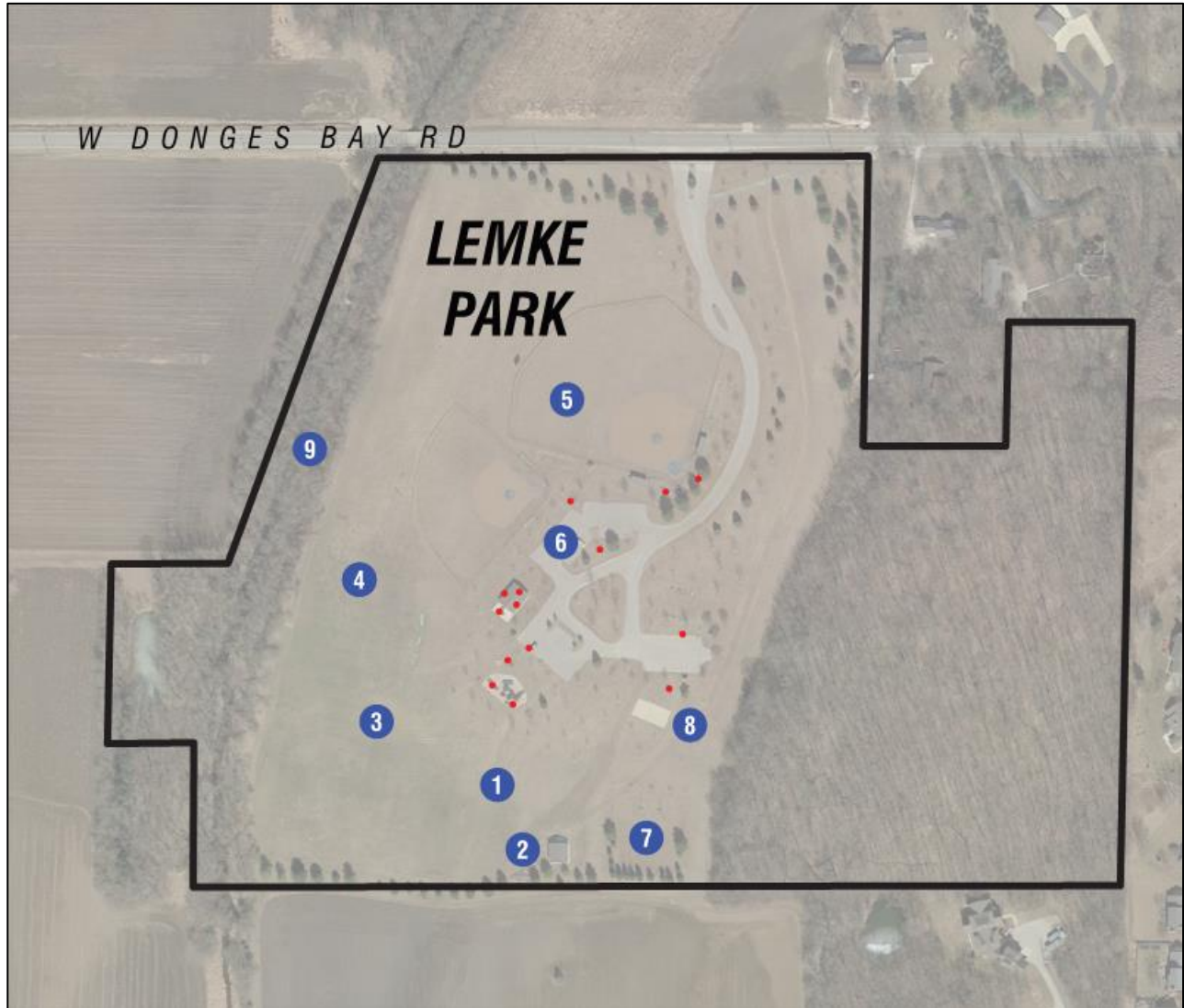
III. PUBLIC PROCESS



Opinions of the community for the future of Mequon parks were expressed during the public process phase of the project. This phase included the gathering of public opinion from public meetings, meetings with City staff, a communitywide online survey and stakeholder interviews.

STAKEHOLDER INTERVIEWS

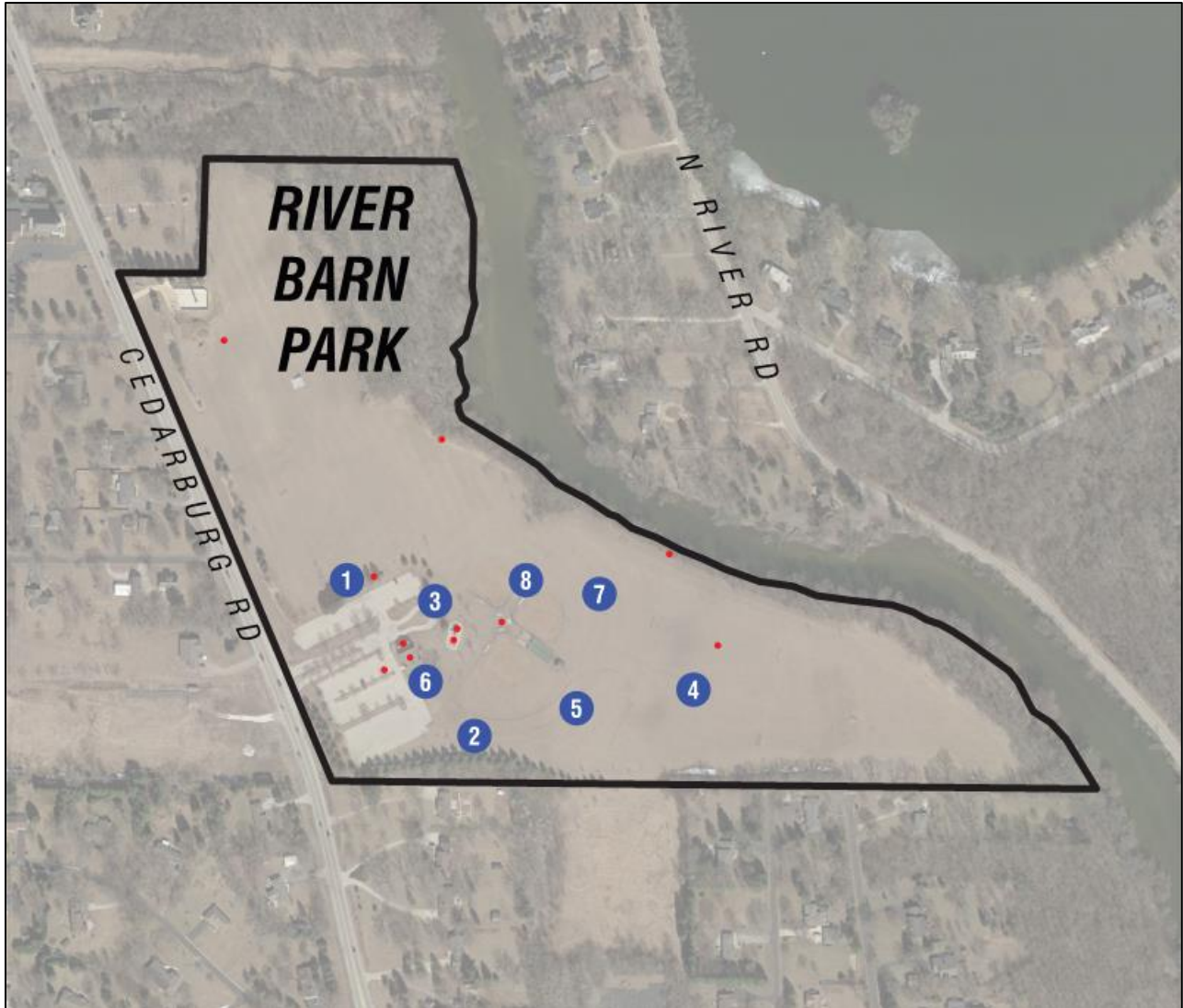
Representatives from the City and Ayres Associates met with several interested park stakeholder groups to discuss their hopes for future improvements in Lemke Park, River Barn Park and Rotary Park. Stakeholders included representatives from Cardinal Football, North Shore United Soccer, Gathering on the Green, Thiensville-Mequon Youth Baseball Association, Ozaukee Lacrosse and Rennie Field. The opinions expressed in those meetings as to the future improvements desired by each of these stakeholder groups are illustrated on the following pages.



Stakeholder Interview Findings (• Site Audit Observed Issues)

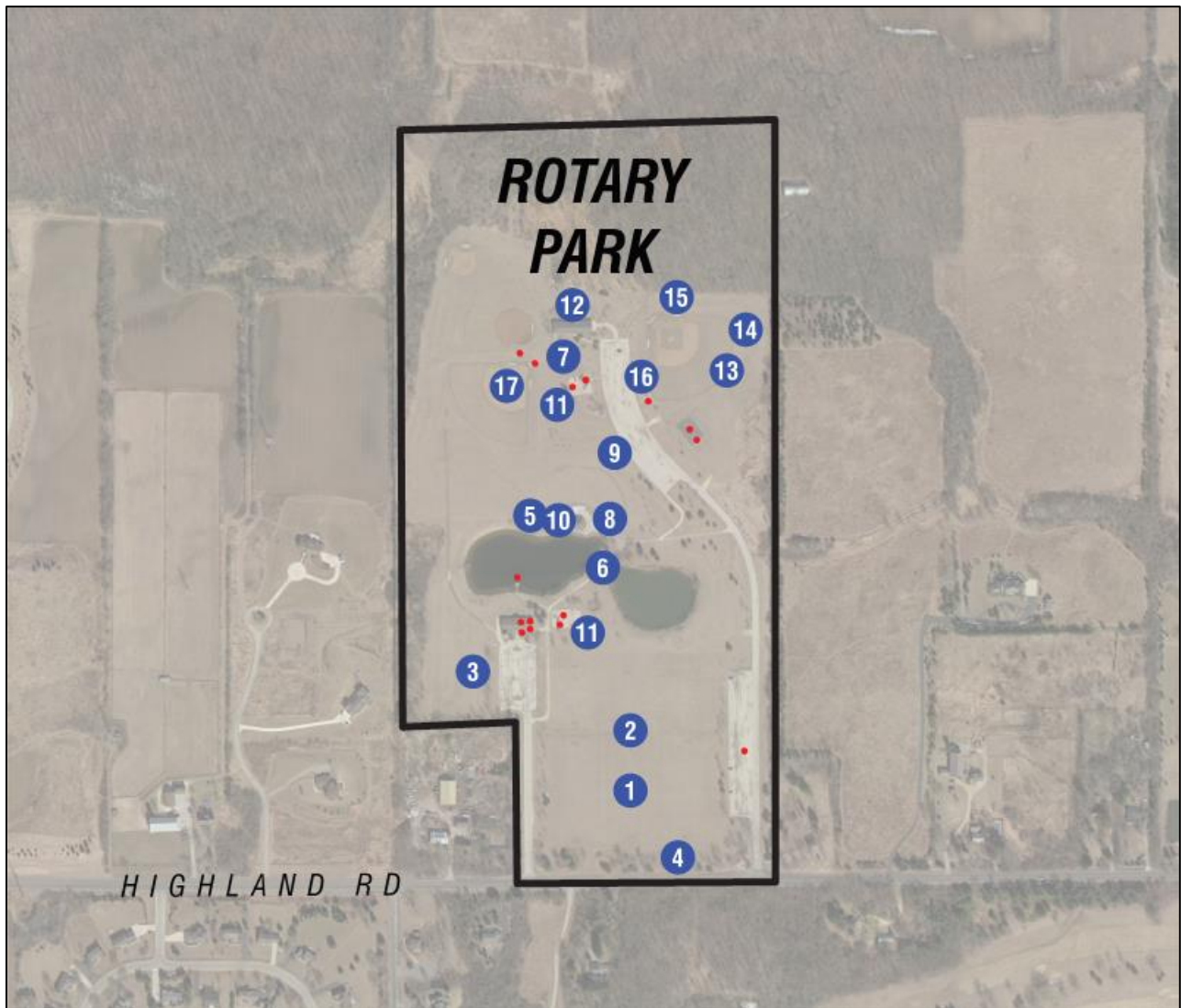
- | | |
|--|---|
| <ol style="list-style-type: none"> 1. Cardinal Football would like to continue using Lemke Park for practices. This would include the reconfiguration of fields to be near the existing football shed. 2. Additional facilities desired by Cardinal Football include restrooms, utilities and additional storage. 3. Cardinal Football expressed a desire for field lighting. 4. Ozaukee Boys Lacrosse currently uses fields at Lemke Park. They would be receptive to the possibility of moving to River Barn Park. The River Barn site has restrooms and drinking water and would consolidate the girls and boys lacrosse teams in one location. | <ol style="list-style-type: none"> 5. Lemke Park is currently used for baseball games and practices. Baseball will likely remain in the park with the possibility of an additional field in the future. 6. The consensus was that the parking lot was awkward and undersized. It should be reconfigured in future park design. 7. Athletic field relocation and parking lot reconfiguration may require the relocation of the archery range. 8. Athletic field relocation and parking lot reconfiguration may require the relocation of the volleyball court. 9. The construction of a trail along the Little Menomonee Trail was discussed as a potential general park improvement. |
|--|---|

RIVER BARN PARK



Stakeholder Interview Findings (• Site Audit Observed Issues)

- | | |
|---|---|
| <ol style="list-style-type: none">1. Parking lot expansion needed (North).2. Parking lot expansion (South).3. Reconfigure drop-off lane.4. Boys lacrosse may choose to move to River Barn Park to consolidate girls and boys lacrosse in one location.5. Scoreboards at all ballfields. | <ol style="list-style-type: none">6. There is an issue with the shelter being used as a concession building at the same time as shelter rentals.7. Permanent outfield fences are desired although there may be an issue with construction in the flood plain.8. Cantilevered dugout covers are desired. |
|---|---|



Stakeholder Interview Findings (• Site Audit Observed Issues)

- | | |
|---|--|
| <ol style="list-style-type: none"> 1. North Shore United Soccer Club would like to use three fields for practices and tournaments. 2. Soccer field lighting is desired. 3. Drainage issues at field west of parking lot. 4. Drainage issues on south side of park near soccer fields. 5. Drainage issues west of stage. 6. Drainage issue between ponds. 7. Drainage issue near north playground and shelter. 8. There are a lack of facilities near the stage area to accommodate performers for events such as Gathering on the Green. A restroom/dressing room building with utilities (including WiFi) is needed. | <ol style="list-style-type: none"> 9. A power upgrade at service near parking lot is needed. 10. A power upgrade at service near stage is needed. 11. Replace play equipment with all-inclusive play equipment. 12. Upgrade or replace Reuter Pavilion with upgraded amenities including air conditioning, concessions, indoor/outdoor conversion and storage. 13. Lengthen outfield fence dimensions to accommodate high school baseball. 14. A scoreboard with app control is desired. 15. Cantilevered dugout covers (All ballfields). 16. Bullpens. 17. Would like a raised pitcher's mound at south ballfield. |
|---|--|

MEQUON PARK & OPEN SPACE SURVEY

A community survey was prepared as part of the 2019 City of Mequon Park and Open Space Plan to help determine public opinion on future opportunities for improvements in City Parks. The results of the survey were used to make the recommendations in the Park and Open Space Plan and the Master Plans presented in this report. A summary of the survey results corresponding to the three Parks in this report can be found below. See the 2019 City of Mequon Park and Open Space Plan for complete survey results.

Survey Results:

- **Rotary Park** was the most often attended park in the community with 76% of survey respondents claiming to have visited it in the last year.
- Asked what new facility they would like to see in City parks, survey participants most commonly responded they would like a “Sledding Hill” (48%). Other frequent responses were “Restrooms at **Lemke Park**” (45%), “Trailhead for Ozaukee Interurban Trail” (43%) and “Outdoor Ice Skating” (42%).
- Survey participants were asked to rate their experience using elements and/or infrastructure at specific Mequon parks.
 - At **Lemke Park**, “Parking” was most frequently rated “Excellent” or “Good” (38%) while “Portable Toilets” was most frequently rated “Poor” (31%).
 - At **River Barn Park**, “Parking” was most frequently rated “Excellent” or “Good” (57%) while “Walking Trails” was most frequently rated “Poor” (3%).
 - At **Rotary Park**, “Parking” was most frequently rated “Excellent” or “Good” (68%) while “Basketball Court” was most frequently rated “Poor” (5%).
- Survey participants were asked if they felt the recreational needs of any specific age group were not being met by facilities offered in Mequon parks. Adolescents (Ages 13-18) were the age group the most survey respondents (34%) believed were underserved by City parks.
- Other results of the survey included the following:
 - The largest percentage of survey participants (28%) have been a Mequon resident for 0-5 years.
 - The household of the largest percentage of survey participants (63%) consists of two or more adults and one or more minors.
 - When asked to rank the importance of improvements to a selected list of facilities, survey respondents ranked “Improving/Establishing Public Restrooms” as most important and “Improving/Establishing Wayfinding Signage” as least important.
 - 78% of survey participants felt there was an adequate recreational park/open space within close proximity to their home.
 - 79% of survey participants typically get to City parks by driving.
 - When asked to rank the importance of the preservation of a selected list of natural and cultural features in Mequon, survey participants ranked “Woodlands” as the most important and “Historic Sites” as the least important.
 - 82% of survey respondents felt the development of a city-wide bicycle/pedestrian recreational trail should be a priority for the City of Mequon.
 - When asked to rank the quality of a selected list of characteristics about City parks, “Park Cleanliness” had the most “Excellent” or “Good” responses (82%) while “Athletic Field Conditions” had the most “Poor” responses (5%).

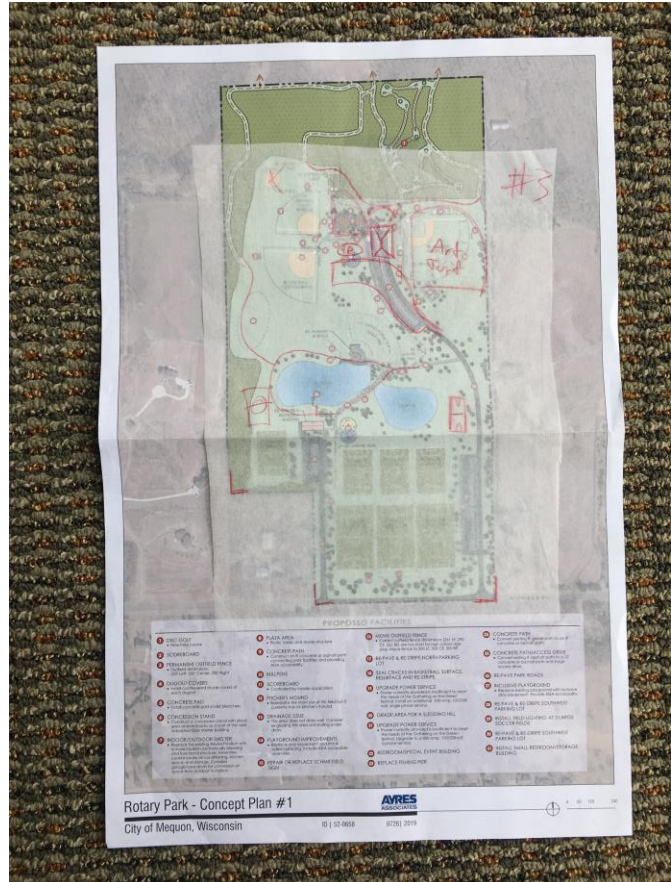
PUBLIC MEETING

A public meeting was held on May 15, 2019 as part of the Mequon Park and Open Space Plan to give residents an opportunity to ask questions about the planning process and to give input regarding their hopes for the future of City parks. A focus of the meeting was future improvements related to Lemke Park, River Barn Park and Rotary Park.

Hand drawn sketches, created on transparencies over aerial photographs of the parks, were created during the public meeting and stakeholder meeting to quickly draw ideas expressed for possible park improvement scenarios. These sketches were refined based on results of the online survey, City staff input and demographic analysis to help create the initial park concept plans.



Preliminary Hand-Drawn Concept Sketches

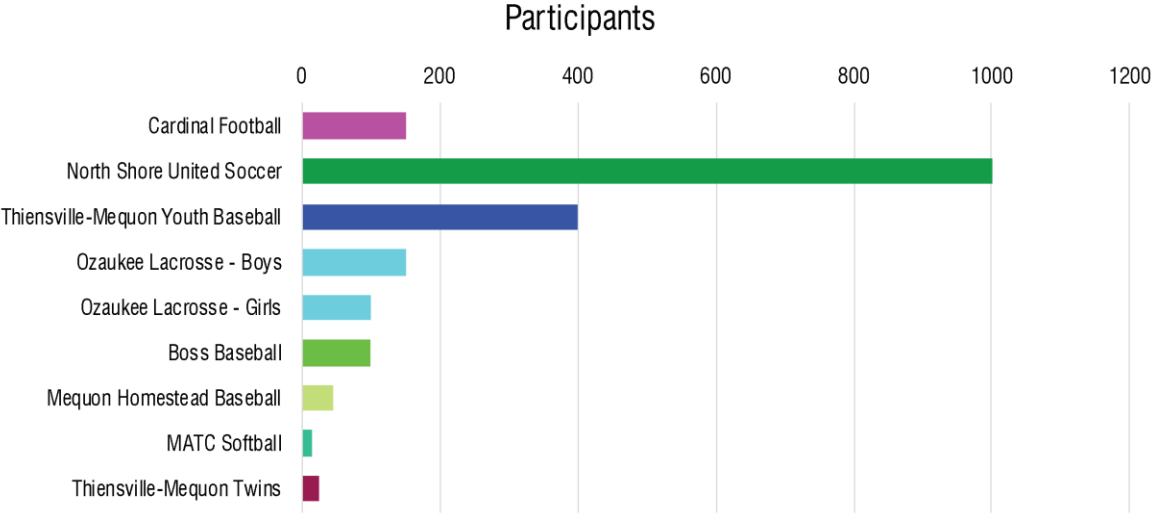


ANAYSIS OF DATA COLLECTED

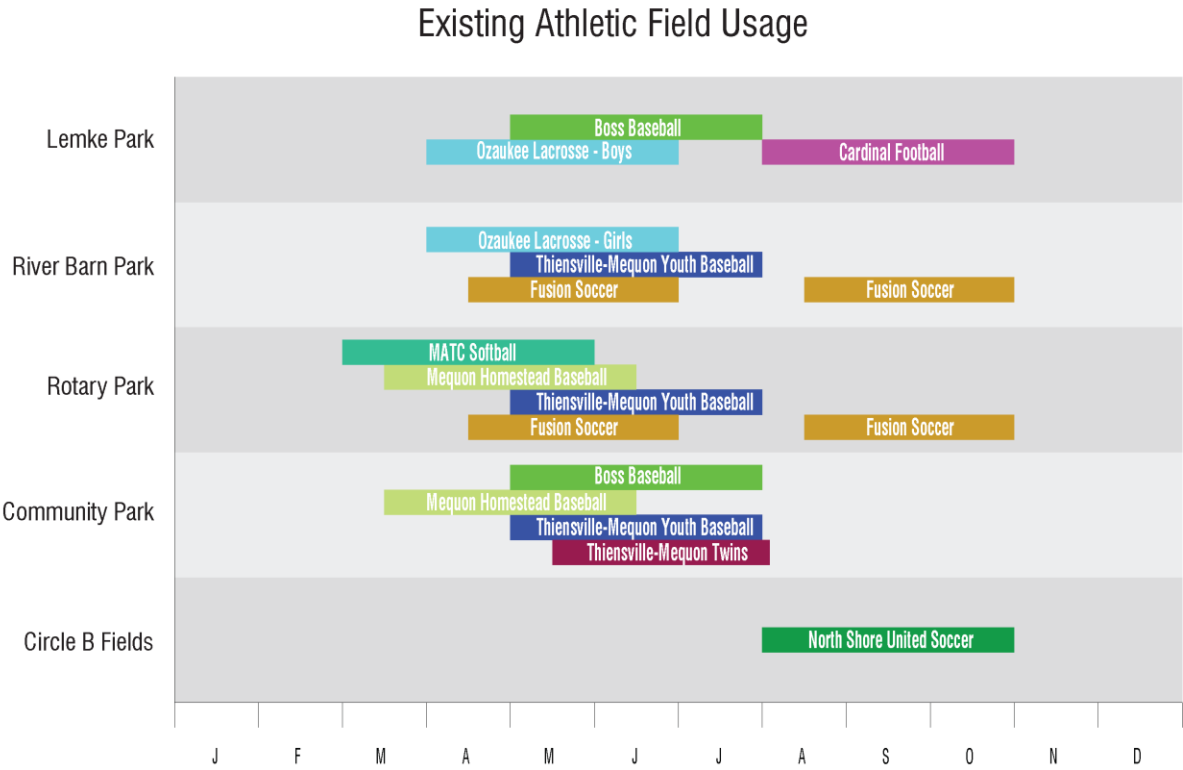
Concept plans alternatives were created for each of the three parks based on data collected during the public process phase of the project and during the preparation of the Park and Open Space Plan. Some of the factors that contributed to the design of the concepts include the following:

- Online survey
- Stakeholder meetings
- Public meeting
- City staff input
- Site audits
- Demographic analysis
- GIS analysis
- Past planning documents

Another important factor considered when preparing the initial concept plans was the level of participation and available space for each sport in City athletic fields. Based on information gathered in stakeholder meetings and other available records, the following table was created illustrating the current level of participation in several popular area organizations.

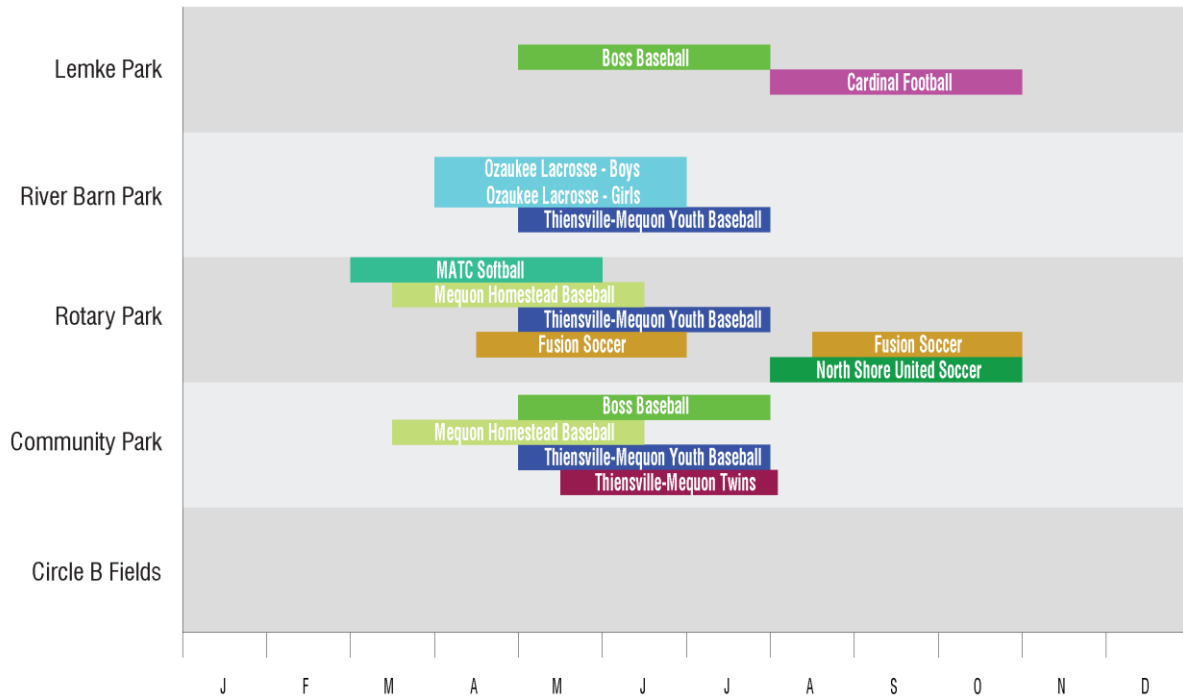


North Shore United Soccer has the highest participation level of the stakeholders shown with Thiensville-Mequon Youth Baseball and Cardinal Football also showing relatively high participation. The availability of athletic fields in City parks should attempt to accommodate these high participation levels as best as possible. In addition to an analysis of participation levels, an understanding of available facilities and their usage levels is needed. The following table illustrates the existing athletic field usage in City parks over the course of a year.



Relocation of park facilities proposed in this plan attempt to maintain the existing level of service to activities with lower participation and provide additional support for activities with high participation. Should the relocation of facilities cause a greater overlap in activities at a certain park, considerations would need to be made including the addition of parking, restrooms and other support components. These factors were considered in the preparation of the park concept plans. The following table illustrates the athletic field usage if the recommendations of this plan are completed.

Proposed Athletic Field Usage



The following tables list the number of athletic facilities currently provided in City parks, the changes to facilities provided proposed in this plan, and the number of facilities that would be provided should the recommendations of this plan be completed.

EXISTING ATHLETIC FIELDS – LEMKE PARK, RIVER BARN PARK & ROTARY PARK

	Baseball	Softball/Youth Baseball	Football	Lacrosse	Soccer
LEMKE PARK	1	1	1	2	0
RIVER BARN PARK	0	3	1	2	2
ROTARY PARK	1	2	0	0	7
TOTAL FACILITIES PROVIDED	2	6	2	4	9

PROPOSED CHANGES IN FACILITIES – LEMKE PARK, RIVER BARN PARK & ROTARY PARK

	Baseball	Softball/Youth Baseball	Football	Lacrosse	Soccer
LEMKE PARK	0	+1	+1	-2	0
RIVER BARN PARK	0	0	-1	+3	-2
ROTARY PARK	0	+1	0	0	+1
CHANGES IN FACILITIES PROVIDED	0	+2	0	+1	-1

PROPOSED ATHLETIC FIELDS – LEMKE PARK, RIVER BARN PARK & ROTARY PARK

	Baseball	Softball/Youth Baseball	Football	Lacrosse	Soccer
LEMKE PARK	1	2	2	0	0
RIVER BARN PARK	0	3	0	5	0
ROTARY PARK	1	3	0	0	8
TOTAL FACILITIES PROVIDED	2	8	2	5	8

IV. LEMKE PARK MASTER PLAN RECOMMENDATIONS

CONCEPT PLANS - LEMKE PARK

Four Concept Plans were created for Lemke Park to illustrate potential improvement scenarios. See **Appendix B** for full size Concept Plans.



Concept 1



Concept 2



Concept 3



Concept 4

Concept recommendations included:

Concept 1

- Centralized parking (218 stalls)
- Relocated football facilities with bleachers, lighting and storage unit
- Additional youth baseball field with batting cages
- Basketball court
- Relocated archery range and horseshoe pits
- Trails
- Small (12 stall) parking lot near proposed ballfield

Concept 2

- Centralized parking (182 stalls)
- Relocated park entrance drive
- Relocated football facilities with bleachers and lighting
- Restroom/storage building
- Two additional baseball fields (Full size & youth)

- Concession/restroom building at ballfields
- Batting cages
- Trails
- Basketball court
- Relocated playground and archery range

Concept 3

- Expanded parking (3 lots, 358 total stalls)
- Relocated football facilities with bleachers, lighting and storage unit
- Additional youth baseball field with batting cages
- Basketball court
- Trails
- Restroom building
- Archery range relocated to future park land on MMSD property north of Lemke Park
- Relocated volleyball court and horseshoe pits

Concept 4

- Expanded parking (3 lots, 197 total stalls)
- Relocated park entrance drive
- Additional youth baseball field
- Relocated football facilities with bleachers and lighting
- Restroom/storage building
- Basketball court
- Trails
- Relocated archery range, horseshoe pits and volleyball court

MASTER PLAN RECOMMENDATIONS - LEMKE PARK

The four Concept Plans were reviewed by the City and a Preferred Concept Plan was created. The Preferred Concept Plan was based on Concept 4 with desired elements taken from each of the other versions. The intention was to retain as much of the existing facilities and infrastructure as possible while at the same time providing improvements intended to add to the functionality of the park. Additional elements were also added to the plan in the review phase based on comments from City staff. The basic layout of the athletic fields and parking was taken from Concept 4. Elements such as the inclusion of a concession building, an additional shelter, an additional football storage shed and batting cages were taken from the other concepts or added in the review phase to complete the final concept. See **Appendix E** for a full-size version of the final plan.

The final plan includes the following features:

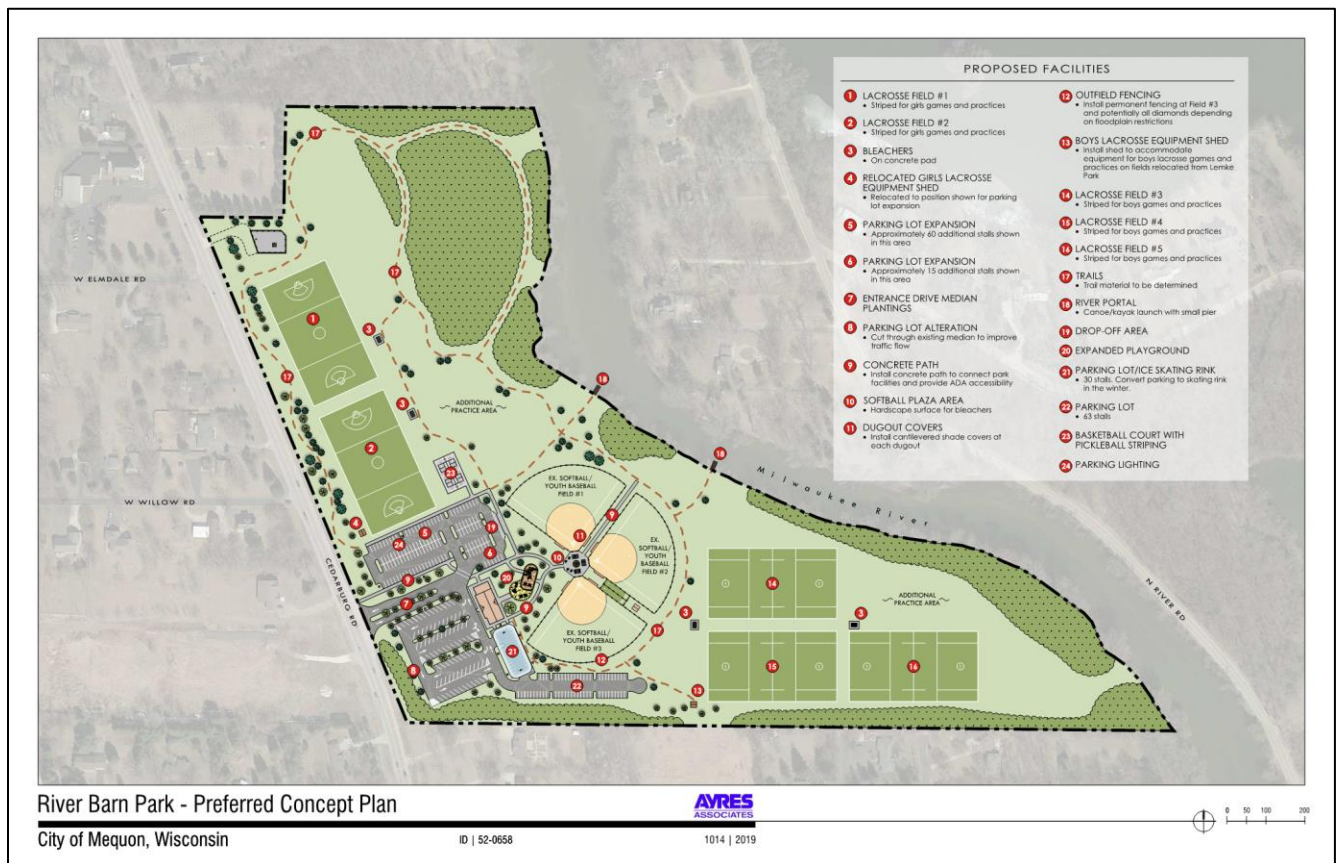
- | | | |
|---|--|--|
| • Football fields with bleachers, lighting and scoreboard | • Concession/restroom building and plaza area at baseball fields | • Batting cages |
| • Expanded and reconfigured parking lots | • Baseball field improvements | • Football storage shed |
| • Reconfigured park entrance road | • Basketball court | • River restoration and stormwater management |
| • Additional youth baseball field | • Storage/restroom building | • Relocation of archery range, horseshoe pits and volleyball court |
| | • Trail and path network | |

MASTER PLAN RECOMMENDATIONS - RIVER BARN PARK

A final review by the City resulted in the creation of the preferred concept for River Barn Park. The final revision included the expansion of the parking lot south of the Sommer Pavilion. This was intended to provide additional parking and serve as a base for the proposed ice skating rink. Moving the ice skating rink closer to the Pavilion would allow for the pavilion to serve as a warming house for the skating rink. Inclusion of a skating rink was a priority in park master planning process as it was one of the most desired new facilities as shown by the results of the Park and Open Space Plan survey. See **Appendix E** for a full-size version of the final plan.

The final plan includes the following features:

- Lacrosse fields (3 boys and 2 girls)
- Parking lot expansion and improvements
- Trail and path network
- Multi-sport court
- Expanded playground
- Baseball field improvements
- Ice skating rink
- Canoe & kayak launches
- Park lighting



SEE APPENDIX E FOR FULL SIZE GRAPHIC

VI. ROTARY PARK MASTER PLAN RECOMMENDATIONS

CONCEPT PLAN - ROTARY PARK

The process for creating a final plan for Rotary Park was done in a similar fashion as the process for the Lemke Park plan. Three initial concepts were drafted illustrating development scenarios and presented to the City for review. A final preferred concept was chosen based on elements from each of the initial concepts and input from City staff. See **Appendix D** for full size versions of the Concept Plans.



Concept 1



Concept 2



Concept 3

The concepts presented a similar group of facilities in a variety of configurations. Notable exceptions include:

- No new ballfield in Concept 1
- Unique parking configuration in Concept 3
- Reoriented turf baseball field in Concept 3
- Basketball court relocated in Concept 3

MASTER PLAN RECOMMENDATIONS - ROTARY PARK

The preferred concept included elements from each concept. The baseball field configuration is similar to that in Concept 1, the soccer field configuration is similar in Concept 2 and the parking lot design borrows from Concept 3. The basketball/pickleball configuration was added after the initial concepts were created as was the adjacent parking area. Other changes made during the final plan preparation included the addition to the Rotary Pavilion, removal of the disc golf recommendation and inclusion of the park entry wayfinding signage. See **Appendix E** for a full-size version of the final plan.

The final plan includes the following features:

- Soccer fields
- Expanded and reconfigured parking lots
- Indoor/outdoor shelter
- Basketball/pickleball courts
- Inclusive playgrounds
- Baseball field improvements
- Pavilion addition
- Fishing pier
- Trail and path network
- Hardscape plaza
- Power upgrades
- Drainage improvements
- Sledding hill



PROPOSED FACILITIES

- | | | | |
|---|---|--|--|
| <p>1 GRAVEL TRAIL
• Complete gaps in trail network at Fukalte Woods to create hiking loops</p> <p>2 PARKING EXPANSION - NORTH
• ~ 68 Stalls</p> <p>3 SCOREBOARD</p> <p>4 PERMANENT OUTFIELD FENCE
• Outfield dimensions: 200' Left, 200' Center, 200' Right</p> <p>5 PICKLEBALL COURTS</p> <p>6 DUG-OUT COVERS
• Install cantilevered shade covers at each dugout</p> <p>7 PLAZA AT BALLFIELDS
• Hardscape area to include bleachers, picnic tables, planters and fountains</p> <p>8 INDOOR/OUTDOOR SHELTER
• Replace the existing Reuter Pavilion with a more modern, aesthetically pleasing and functional structure. Amenities could include air conditioning, kitchen space, and storage. Consider garage-type doors for conversion of space from outdoor to indoor.</p> <p>9 PLAZA AREA</p> | <p>10 CONCRETE PATH
• Construct an 8' concrete or asphalt path connecting park facilities and providing ADA accessibility.</p> <p>11 CONCRETE PAD
• Install concrete pad under bleachers</p> <p>12 BULLPENS</p> <p>13 PITCHER'S MOUND
• Baseball is the main use of this field but it currently has no pitcher's mound</p> <p>14 PLAYGROUND IMPROVEMENTS
• Replace play equipment and install safety surfacing. Include ADA accessible amenities.</p> <p>15 REPAIR OR REPLACE SCHMITT FIELD SIGN</p> <p>16 MOVE OUTFIELD FENCE
• Current outfield fence dimensions (261 LF, 290 CF, 261 RF) are too short for high school age play. Move fence to 300 LF, 345 CF, 300 RF.</p> <p>17 SCOREBOARD
• Controlled by mobile application</p> <p>18 BASKETBALL COURT</p> | <p>19 RE-PAVE & RE-STRIPE NORTH PARKING LOT
• ~147 STALLS</p> <p>20 GRADE AREA FOR A SLEDDING HILL</p> <p>21 DRAINAGE ISSUE
• This area does not drain well. Consider re-grading this area or installing under drain.</p> <p>22 UPGRADE POWER SERVICE
• Power currently provided is insufficient to meet the needs of the Gathering on the Green festival. Install an additional 100-amp, 120/240 volt, single phase service.</p> <p>23 UPGRADE POWER SERVICE
• Power currently provided is insufficient to meet the needs of the Gathering on the Green festival. Upgrade to a 400-amp, 120/208volt, 3-phase service.</p> <p>24 SHELTER ADDITION</p> <p>25 CONCRETE PATH/ACCESS DRIVE
• Convert existing 8' asphalt path to a 12' concrete or asphalt path and stage access drive.</p> <p>26 RE-PAVE PARK ROADS</p> <p>27 REPLACE FISHING PIER</p> | <p>28 CONCRETE PATH
• Convert existing 8' gravel path to an 8' concrete or asphalt path.</p> <p>29 INCLUSIVE PLAYGROUND
• Replace existing playground with inclusive play equipment. Provide ADA accessibility.</p> <p>30 RE-PAVE & RE-STRIPE SOUTHWEST PARKING LOT</p> <p>31 CONVERT EXISTING U10 SOCCER FIELD TO A U13 SOCCER FIELD</p> <p>32 SOCCER FIELD (U10)</p> <p>33 RE-PAVE & RE-STRIPE SOUTHEAST PARKING LOT</p> <p>34 INSTALL FIELD LIGHTING AT 3 LARGE SOCCER FIELDS</p> <p>35 INSTALL SMALL RESTROOM/STORAGE BUILDING</p> <p>36 NEW PARKING LOT
• ~53 STALLS</p> <p>37 PARK I.D./WAYFINDING SIGNAGE</p> |
|---|---|--|--|

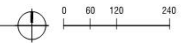
Rotary Park - Preferred Concept Plan

City of Mequon, Wisconsin

ID | 52-0658



1003 | 2019



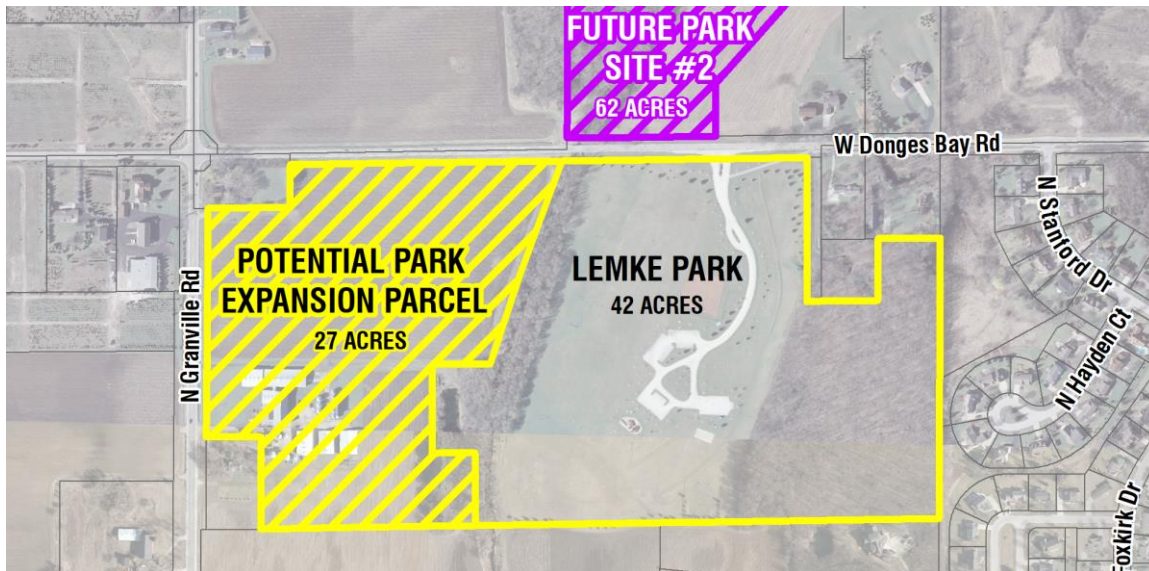
SEE APPENDIX E FOR FULL SIZE GRAPHIC

VII. FUTURE PARK EXPANSIONS

Future expansion of existing parks is possible should adjacent properties become available for acquisition. Expansion opportunities at Lemke Park and Rotary Park could potentially transform either park into a regional facility depending on the facilities constructed in the acquired properties.

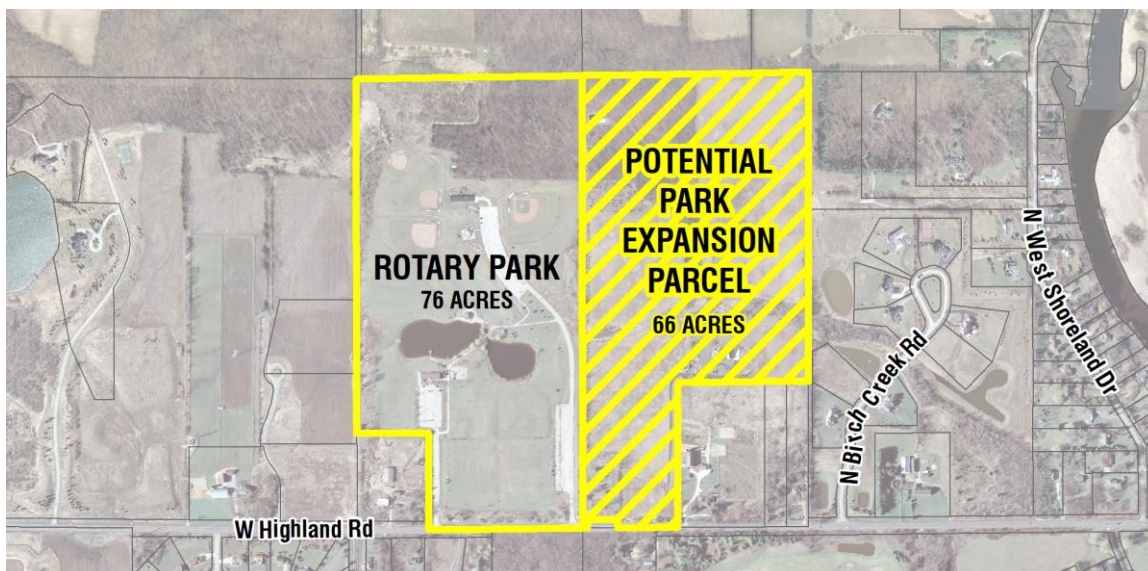
Lemke Park

Opportunity may exist for the future expansion of Lemke Park to the east with the purchase of a 27-acre parcel currently owned by Lemke Seed Farms. At 69 acres the new park would be able to host any number of new facilities and have the potential to develop into a regional park.



Rotary Park

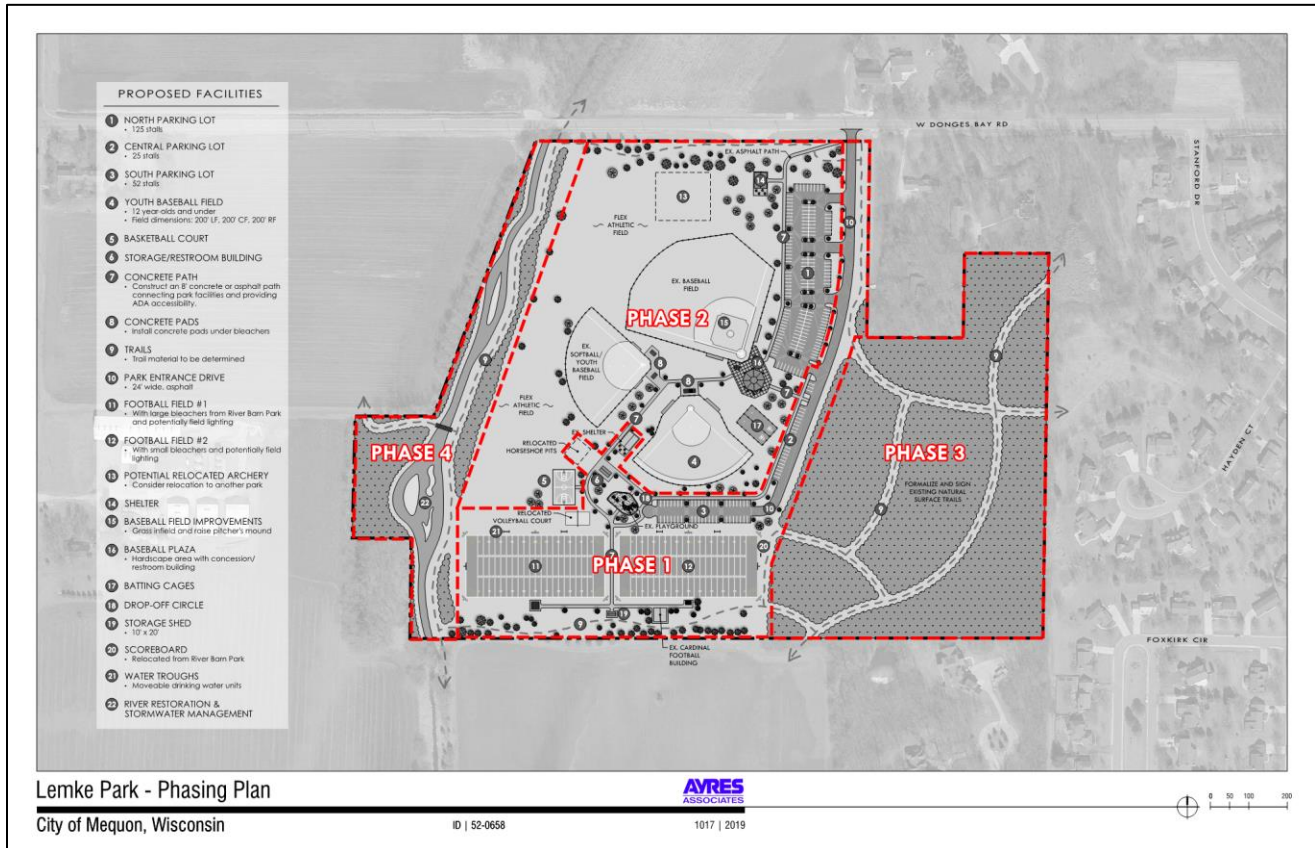
A similar opportunity for expansion would be possible at Rotary Park with the purchase of an adjacent property. Purchase of a 66-acre parcel to the east of the park would bring total park area to 142 acres. As with development at Lemke Park, additional facilities with expansion of this size could potentially make Rotary Park a regional draw.



VIII. PHASING PLANS

This section illustrates potential construction phasing scenarios that could be implemented based on factors such as demand for facilities, site access, cost of construction and other scheduling factors. See **Appendix F** for full size phasing plans.

PHASING – LEMKE PARK

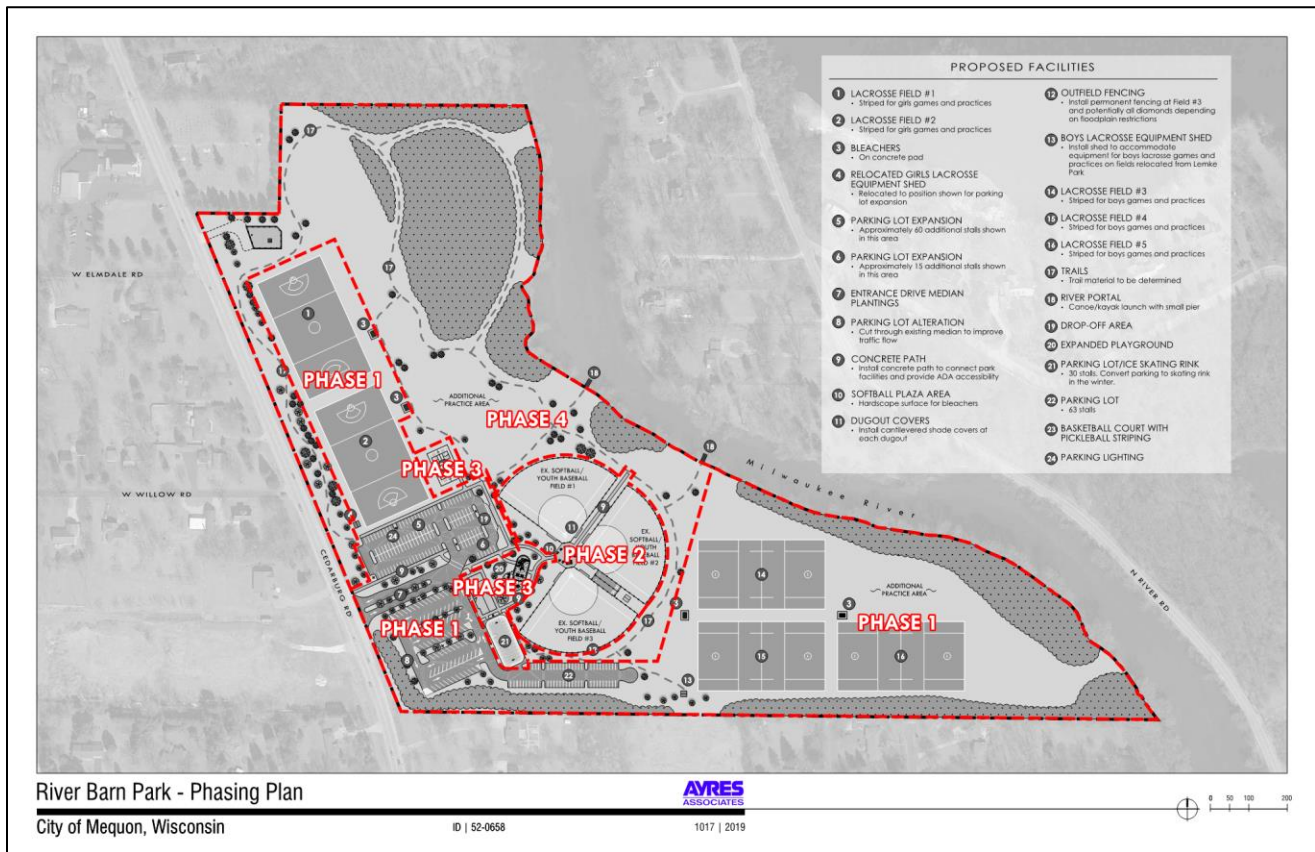


SEE APPENDIX F FOR FULL SIZE GRAPHIC

PROPOSED CONSTRUCTION PHASING – LEMKE PARK

Phase 1	Football improvements, park entry road, parking lots (south & central), relocated volleyball, relocated horseshoes, concrete paths
Phase 2	Baseball field improvements, plaza, concession building, north parking lot, north shelter, concrete paths, relocated archery range, batting cages
Phase 3	Trails, natural area
Phase 4	Trails, river restoration, stormwater management area, bridge

PHASING – RIVER BARN PARK

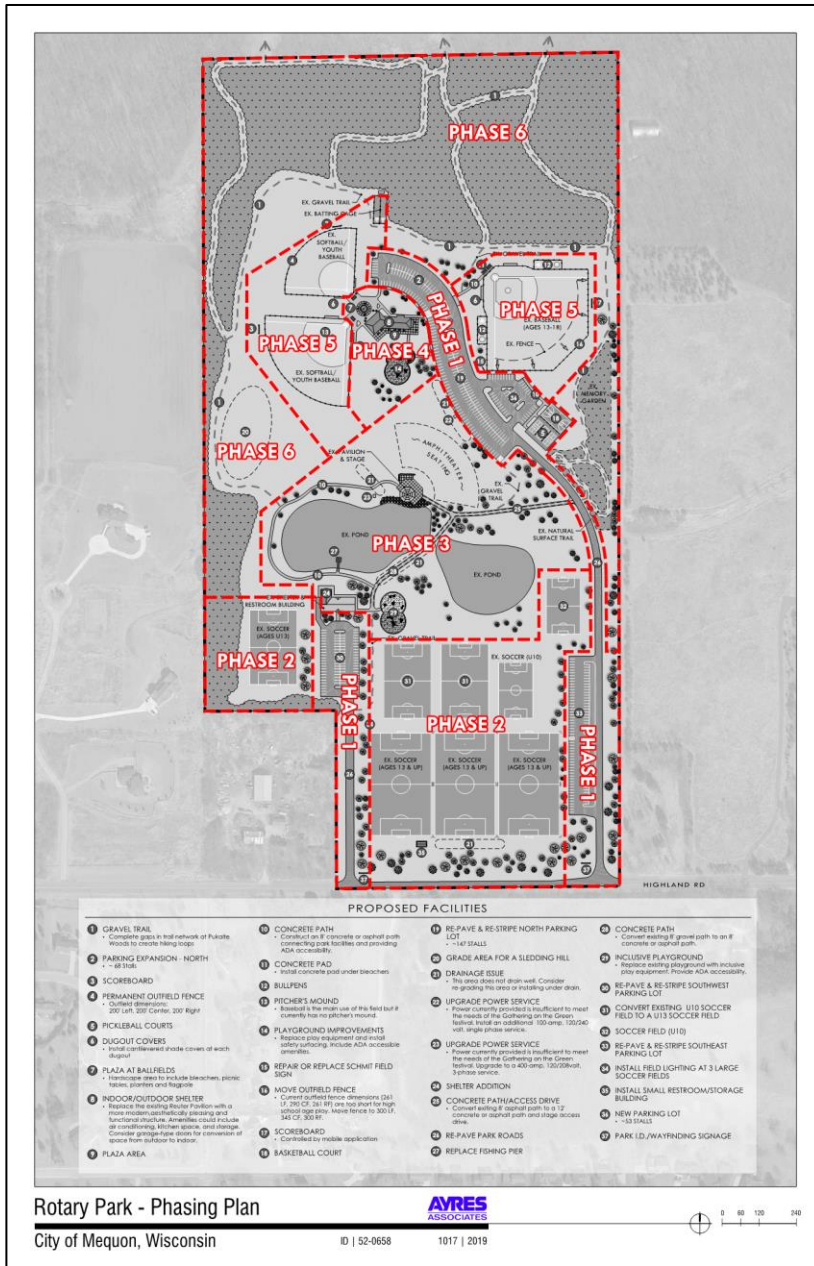


SEE APPENDIX F FOR FULL SIZE GRAPHIC

PROPOSED CONSTRUCTION PHASING – RIVER BARN PARK

Phase 1	Lacrosse improvements, park entry road, parking lots
Phase 2	Baseball improvements
Phase 3	Expanded playground, basketball/pickleball court, expanded parking lot, outdoor ice skating rink, concrete paths
Phase 4	Trails, canoe/kayak launches

PHASING – ROTARY PARK



PROPOSED CONSTRUCTION PHASING – ROTARY PARK

Phase 1	Reconfigure park roads and parking lots, basketball court, pickleball courts
Phase 2	Soccer improvements, restroom/storage building, drainage improvements
Phase 3	Pavilion addition, inclusive playground, concrete path network, utility upgrades, drainage improvements, fishing pier
Phase 4	Indoor/outdoor shelter, inclusive playground, plaza area
Phase 5	Baseball improvements
Phase 6	Trail network, sledding hill

SEE APPENDIX F FOR FULL SIZE GRAPHIC

IX. PRELIMINARY BUDGET

A preliminary budget was prepared for the Master Plan as part of this process. This budget reflects 2019 materials and labor estimates and should be verified based on detailed design and engineering when development occurs. Refer to **Appendix A** for the estimate of probable construction costs for each of the preferred concept plans.

Appendix A:

Construction Cost Estimates

COST ESTIMATE

Project: LEMKE PARK

Date: 10/18/2019

Project Number: 52-0658

Estimated by: JW, AO

Cost Estimate Status: PREFERRED CONCEPT

Approved by: BT



LEMKE PARK - PERFERRED CONCEPT

Item	Qty.	Unit	Unit cost	Item Total	Comments
MOBILIZATION	1	LS	\$100,000.00	\$100,000.00	
EROSION CONTROL	1	LS	\$10,000.00	\$10,000.00	
DEMOLITION	1	LS	\$30,000.00	\$30,000.00	
EARTHWORK	1	LS	\$60,000.00	\$60,000.00	
			SUBTOTAL	\$200,000.00	

PAVEMENT

BASE AGGREGATE DENSE, 1-1/4"	8,040	TN	\$20.00	\$160,800.00	
ENTRANCE DRIVE PARKING LOT	5,045	TN			8"
PATH SYSTEM	2,183	TN			8"
BASKETBALL COURT	261	TN			8"
CURB AND GUTTER	551	TN			6"
ASPHALT PAVEMENT	2,766	TN	\$100.00	\$276,600.00	
ENTRANCE DRIVE PARKING LOT	2,630	TN			4"
BASKETBALL COURT	136	TN			4"
PAVED PATH SYSTEM	44,202	SF	\$5.00	\$221,010.00	
TRAIL SYSTEM	57,864	SF	\$2.50	\$144,660.00	8' WIDE AGGREGATE TRAIL
CONCRETE CURB AND GUTTER, 18"	5,008	LF	\$30.00	\$150,240.00	ENTRANCE DRIVE PARKING LOT
PAVEMENT MARKING STRIPING, 4" WHITE	4,535	LF	\$4.00	\$18,140.00	
PAVEMENT MARKING ACCESSIBLE SYMBOLS	10	EA	\$500.00	\$5,000.00	
PAVEMENT MARKING CROSSWALK	1	EA	\$2,500.00	\$2,500.00	
			SUBTOTAL	\$978,950.00	

SITE AMMENTIES

PICNIC TABLES	20	EA	\$1,000.00	\$20,000.00	
BIKE RACK	4	EA	\$1,500.00	\$6,000.00	
BENCH	15	EA	\$1,000.00	\$15,000.00	
TRASH / RECYCLING RECEPTACLES	12	EA	\$500.00	\$6,000.00	
FLAG POLES	2	EA	\$5,000.00	\$10,000.00	
PLAYER BENCHES	10	EA	\$3,000.00	\$30,000.00	
BLEACHERS	7	EA	\$6,000.00	\$42,000.00	
GRAND STANDS	1	EA	\$12,000.00	\$12,000.00	RELOCATED FROM RIVER BARN PARK
DUMPSTER ENCLOSURE	1	EA	\$25,000.00	\$25,000.00	
SHETER	1	EA	\$50,000.00	\$50,000.00	
CONCESSION / RESTROOM BUILDING	1	EA	\$550,000.00	\$550,000.00	
STORAGE / RESTROOM BUILDING	1	EA	\$350,000.00	\$350,000.00	
FOOTBALL STORGE SHED	1	EA	\$10,000.00	\$10,000.00	
RELOCATED FOOTBALL SCOREBOARD	1	EA	\$7,500.00	\$7,500.00	RELOCATED FROM RIVER BARN PARK
RIVER RESTORATION AND STORMWATER MANAGEMENT	1	LS	\$200,000.00	\$200,000.00	
PARKING LOT LIGHTING	20	EA	\$5,000.00	\$100,000.00	
PEDESTRIAN LIGHTING	10	EA	\$3,000.00	\$30,000.00	
SPORTS FACILITY LIGHTING	10	EA	\$20,000.00	\$200,000.00	
			SUBTOTAL	\$1,663,500.00	

SIGNAGE

REGULATORY SIGNS	13	EA	\$300.00	\$3,900.00	
ADA SIGNAGE	10	EA			
CROSSWALK SIGNS	2	EA			
STOP SIGN	1	EA			
WAYFINDING SIGN	10	EA	\$400.00	\$4,000.00	DIRECTIONAL
RULE SIGNS	5	EA	\$500.00	\$2,500.00	
PARK SIGN	1	EA	\$12,000.00	\$12,000.00	ENTRANCE
			SUBTOTAL	\$22,400.00	

SPORT FACILITIES						
BASKETBALL COURT	1	EA	\$20,000.00	\$20,000.00	FURNISH / INSTALL	
12 AND UNDER BASEBALL FIELD	1	EA	\$85,000.00	\$85,000.00		
BASEBALL FIELD IMPROVEMENTS	1	LS	\$10,000.00	\$10,000.00	GRASS INFIELD AND RASIED PITCHERS MOUND	
BATTING CAGES	2	EA	\$15,000.00	\$30,000.00		
FOOTBALL FIELD	2	EA	\$30,000.00	\$60,000.00		
RELOCATED ARCHERY RANGE	1	LS	\$10,000.00	\$10,000.00		
RELOCATED HORSESHOE PIT	1	LS	\$5,000.00	\$5,000.00		
RELOCATED VOLLEYBALL COURT	1	LS	\$3,000.00	\$3,000.00	CONCEPT 4 ONLY	
			SUBTOTAL	\$223,000.00		
UTILITIES						
WATER CONNECTION	1	LS	\$50,000.00	\$50,000.00		
CONNECT TO EXISITNG	1	EA	\$2,000.00	\$2,000.00		
WATER SERVICE, 2"	1,200	LF	\$40.00	\$48,000.00		
SANITARY	1	LS	\$92,000.00	\$92,000.00		
CONNECT TO EXISITNG	1	EA	\$2,000.00	\$2,000.00		
SANITARY SERVICE, 6"	1,500	LF	\$50.00	\$75,000.00		
CLEANOUTS	15	EA	\$1,000.00	\$15,000.00		
SITE ELECTRICAL	1	LS	\$125,000.00	\$125,000.00		
STORM SEWER	1	LS	\$127,500.00	\$127,500.00		
STRUCTURES	10	EA	\$2,000.00	\$20,000.00	LARGE PARKING LOT	
PIPE	1,150	LF	\$50.00	\$57,500.00	LARGE PARKING LOT	
STORMWATER MANAGEMENT	1	LS	\$50,000.00	\$50,000.00		
			SUBTOTAL	\$394,500.00		
LANDSCAPING						
TREES	150	EA	\$500.00	\$75,000.00		
SHRUBS	40	EA	\$50.00	\$2,000.00		
LAWN RESTORATION	1	LS	\$40,000.00	\$40,000.00		
			SUBTOTAL	\$117,000.00		
			Total	\$3,599,350.00		
			7% Contingency	\$251,954.50		
				\$3,851,304.50		

COST ESTIMATE

Project: RIVER BARN PARK

Date: 10/18/2019

Project Number: 52-0658

Estimated by: JW, AO

Cost Estimate Status: PREFERRED CONCEPT

Approved by: BT



RIVER BARN PARK						
Item	Qty.	Unit	Unit cost	Item Total	Comments	
MOBILIZATION	1	LS	\$65,000.00	\$65,000.00		
EROSION CONTROL	1	LS	\$5,000.00	\$5,000.00		
DEMOLITION	1	LS	\$10,000.00	\$10,000.00		
EARTHWORK	1	LS	\$20,000.00	\$20,000.00		
			SUBTOTAL	\$100,000.00		
PAVEMENT						
BASE AGGREGATE DENSE, 1-1/4"	4,713	TN	\$20.00	\$94,260.00		
PARKING LOT	2,885	TN			8"	
PATH SYSTEM	1,262	TN			8"	
BASKETBALL COURT	261	TN			8"	
CURB AND GUTTER	305	TN			6"	
ASPHALT PAVEMENT	1,686	TN	\$100.00	\$168,600.00		
PARKING LOT	1,550	TN			4"	
BASKETBALL COURT	136	TN			4"	
PAVED PATH SYSTEM	25,815	SF	\$5.00	\$129,075.00		
TRAIL SYSTEM	46,848	SF	\$2.50	\$117,120.00	8' WIDE AGGREGATE TRAIL	
CONCRETE CURB AND GUTTER, 18"	2,722	LF	\$30.00	\$81,660.00	PARKING LOT	
PAVEMENT MARKING STRIPING, 4" WHITE	4,697	LF	\$4.00	\$18,788.00		
PAVEMENT MARKING SYMBOLS	27	EA	\$500.00	\$13,500.00		
ADA PARKING	14	EA				
DIRECTIONAL ARROW	13	EA				
PAVEMENT MARKING CROSSWALK	1	EA	\$2,500.00	\$2,500.00		
			SUBTOTAL	\$625,503.00		
SITE AMMENTIES						
PICNIC TABLES	4	EA	\$1,000.00	\$4,000.00		
BIKE RACK	4	EA	\$1,000.00	\$4,000.00		
BENCH	8	EA	\$1,000.00	\$8,000.00		
TRASH / RECYCLING RECEPTACLES	4	EA	\$500.00	\$2,000.00		
FLAG POLES	1	EA	\$5,000.00	\$5,000.00		
PLAYER BENCHES	12	EA	\$3,000.00	\$36,000.00		
BLEACHERS	7	EA	\$6,000.00	\$42,000.00		
BOYS LACROSSE EQUIPMENT SHED	1	EA	\$30,000.00	\$30,000.00		
RELOCATE GIRLS LACROSSE EQUIPMENT SHED	1	EA	\$10,000.00	\$10,000.00		
RIVER PORTAL	2	EA	\$15,000.00	\$30,000.00	CLEARING, SHORELINE, ETC.	
PARKING LOT LIGHTING	15	EA	\$5,000.00	\$75,000.00		
			SUBTOTAL	\$246,000.00		
SIGNAGE						
REGULATORY SIGNS	18	EA	\$300.00	\$5,400.00		
ADA SIGNAGE	14	EA				
CROSSWALK SIGNS	2	EA				
DO NOT ENTER	1	EA				
STOP SIGN	1	EA				
WAYFINDING SIGN	4	EA	\$400.00	\$1,600.00	DIRECTIONAL	
RULE SIGNS	4	EA	\$500.00	\$2,000.00		
PARK SIGN	1	EA	\$12,000.00	\$12,000.00	ENTRANCE	
			SUBTOTAL	\$21,000.00		
PLAYGROUND						
PLAYGROUND EQUIPMENT	1	LS	\$60,000.00	\$60,000.00		
ENGINEERED WOOD FIBER	460	SY	\$20.00	\$9,200.00		
			SUBTOTAL	\$69,200.00		

SPORT FACILITIES						
BASKETBALL COURT	1	EA	\$20,000.00	\$20,000.00	FURNISH / INSTALL	
DUGOUT COVERS	6	EA	\$15,000.00	\$90,000.00		
OUTFIELD FENCING	1,080	LF	\$30.00	\$32,400.00		
ICE RINK	1	LS	\$15,000.00	\$15,000.00	LINER, BOARDS, ETC.	
RETROFIT GIRLS LACROSSE FIELD	2	EA	\$5,000.00	\$10,000.00	NETS, GRADING, ETC.	
RETROFIT BOYS LACROSSE FIELD	3	EA	\$5,000.00	\$15,000.00	NETS, GRADING, ETC.	
			SUBTOTAL	\$182,400.00		
UTILITIES						
SITE ELECTRICAL	1	LS	\$20,000.00	\$20,000.00		
STORM SEWER	1	LS	\$86,000.00	\$86,000.00		
	STRUCTURES	8	EA	\$2,000.00	\$16,000.00	
	PIPE	800	LF	\$50.00	\$40,000.00	
	STORMWATER MANAGEMENT	1	LS	\$30,000.00	\$30,000.00	
			SUBTOTAL	\$106,000.00		
LANDSCAPING						
TREES	20	EA	\$500.00	\$10,000.00		
LAWN RESTORATION	1	LS	\$40,000.00	\$40,000.00		
			SUBTOTAL	\$50,000.00		
			Total	\$1,400,103.00		
			7% Contingency	\$98,007.21		
				\$1,498,110.21		

COST ESTIMATE

Project: ROTARY PARK
 Project Number: 52-0658
 Cost Estimate Status: PREFERRED CONCEPT

Date: 10/18/2019
 Estimated by: JW, AO
 Approved by: BT



ROTARY PARK - CONCEPT 3

Item	Qty.	Unit	Unit cost	Item Total	Comments
MOBILIZATION	1	LS	\$100,000.00	\$100,000.00	
EROSION CONTROL	1	LS	\$25,000.00	\$25,000.00	
DEMOLITION	1	LS	\$60,000.00	\$60,000.00	
EARTHWORK	1	LS	\$85,000.00	\$85,000.00	
SUBTOTAL				\$270,000.00	

PAVEMENT

BASE AGGREGATE DENSE, 1-1/4"	10,702	TN	\$20.00	\$214,040.00	
ENTRANCE DRIVE AND PARKING LOTS	8,171	TN			8"
PATH SYSTEM	1,956	TN			8"
BASKETBALL COURT	575	TN			8"
ASPHALT PAVEMENT	4,572	TN	\$100.00	\$457,200.00	REPAVE ALL EXISTING
ENTRANCE DRIVE AND PARKING LOTS	4,271	TN			4"
BASKETBALL COURT	301	TN			4"
PAVED PATH SYSTEM	40,006	SF	\$4.00	\$160,024.00	
TRAIL SYSTEM	68,216	SF	\$2.50	\$170,540.00	8' WIDE AGGREGATE TRAIL
PAVEMENT MARKING STRIPING, 4" WHITE	7,152	LF	\$4.00	\$28,608.00	
PAVEMENT MARKING ACCESSIBLE SYMBOLS	16	EA	\$500.00	\$8,000.00	
SUBTOTAL				\$1,038,412.00	

SITE AMMENTIES

PICNIC TABLES	10	EA	\$2,000.00	\$20,000.00	
BIKE RACK	4	EA	\$1,500.00	\$6,000.00	
BENCH	10	EA	\$1,000.00	\$10,000.00	
TRASH / RECYCLING RECEPTACLES	8	EA	\$500.00	\$4,000.00	
FLAG POLES	2	EA	\$5,000.00	\$10,000.00	
PLAYER BENCHES	22	EA	\$3,000.00	\$66,000.00	
BLEACHERS	4	EA	\$6,000.00	\$24,000.00	
DUMPSTER ENCLOSURE	2	EA	\$25,000.00	\$50,000.00	
FISHING PIER	1	EA	\$8,000.00	\$8,000.00	
BULLPENS		LS	\$10,000.00		
DUGOUT COVERS	6	EA	\$15,000.00	\$90,000.00	
SCOREBOARD	4	EA	\$5,000.00	\$20,000.00	
INDOOR / OUTDOOR SHELTER	1	EA	\$800,000.00	\$800,000.00	
PAVILION ADDITION / RESTROOM BUILDING	1	EA	\$200,000.00	\$200,000.00	
RESTROOM / STORAGE BUILDING		EA	\$100,000.00		
PARKING LOT LIGHTING	24	EA	\$5,000.00	\$120,000.00	
SPORTS FACILITY LIGHTING	12	EA	\$20,000.00	\$240,000.00	
SUBTOTAL				\$1,668,000.00	

SIGNAGE

REGULATORY SIGNS	18	EA	\$300.00	\$5,400.00	
ADA SIGNAGE	16	EA			
STOP SIGN	2	EA			
WAYFINDING SIGN	5	EA	\$400.00	\$2,000.00	DIRECTIONAL
RULE SIGNS	4	EA	\$500.00	\$2,000.00	
PARK ENTRY/ WAYFINDING SIGNS	2	EA	\$12,000.00	\$24,000.00	ENTRANCE
REPAIR AND RELOCATE SCHMIT FIELD SIGN	1	LS	\$8,000.00	\$8,000.00	
SUBTOTAL				\$41,400.00	

PLAYGROUND

INCLUSIVE PLAYGROUND	1	LS	\$102,280.00	\$102,280.00	NORTH END
PLAYGROUND EQUIPMENT IMPROVEMENTS	1	EA	\$85,000.00	\$85,000.00	
ENGINEERED WOOD FIBER	864	SY	\$20.00	\$17,280.00	12 INCHES
INCLUSIVE PLAYGROUND	1	LS	\$500,540.00	\$500,540.00	SOUTH END
PLAYGROUND CURB	380	LF	\$28.00	\$10,640.00	
PLAYGROUND EQUIPMENT	1	EA	\$300,000.00	\$300,000.00	
POURED IN PLACE SURFACING	9,495	SF	\$20.00	\$189,900.00	
SUBTOTAL				\$602,820.00	

SPORT FACILITIES						
	NEW BASKETBALL COURT	1	EA	\$20,000.00	\$20,000.00	
	PICKLEBALL COURTS	1	EA	\$20,000.00	\$20,000.00	
	13 AND OVER BASEBALL FIELD	1	EA	\$200,000.00	\$200,000.00	
	PERMANNENT OUTFIELD FENCING	360	LF	\$30.00	\$10,800.00	
	RELOCATE OUTFIERLD FENCE		LF	\$30.00		
	PITCHERS MOUND		LS	\$2,000.00		
	SOCCER FIELD (U10)	1	EA	\$5,000.00	\$5,000.00	
	CONVERT EXIST U10 SOCCER TO U13 SOCCER	2	EA	\$5,000.00	\$10,000.00	
				SUBTOTAL	\$265,800.00	
UTILITIES						
	WATER CONNECTION	1	LS	\$52,000.00	\$52,000.00	
	CONNECT TO EXISITNG	2	EA	\$2,000.00	\$4,000.00	
	WATER SERVICE, 2"	1,200	LF	\$40.00	\$48,000.00	
	SANITARY	1	LS	\$76,000.00	\$76,000.00	
	CONNECT TO EXISITNG	2	EA	\$2,000.00	\$4,000.00	
	SANITARY SERVICE, 6"	1,200	LF	\$50.00	\$60,000.00	
	CLEANOUTS	12	EA	\$1,000.00	\$12,000.00	
	SITE ELECTRICAL	1	LS	\$100,000.00	\$100,000.00	
	STORM SEWER	1	LS	\$180,000.00	\$180,000.00	
	STRUCTURES	15	EA	\$2,000.00	\$30,000.00	
	PIPE	2,000	LF	\$50.00	\$100,000.00	
	STORMWATER MANAGEMENT	1	LS	\$50,000.00	\$50,000.00	
				SUBTOTAL	\$408,000.00	
LANDSCAPING						
	TREES	150	EA	\$500.00	\$75,000.00	
	SHRUBS	75	EA	\$50.00	\$3,750.00	
	LAWN RESTORATION	1	LS	\$60,000.00	\$60,000.00	
				SUBTOTAL	\$138,750.00	
				Total	\$4,433,182.00	
				7% Contingency	\$310,322.74	
					\$4,743,504.74	

Appendix B:

Concept Plans – Lemke Park



PROPOSED FACILITIES

- 1** SOFTBALL/YOUTH BASEBALL FIELD
 - Outfield dimensions: 200' Left, 200' Center, 200' Right
- 2** ANGLED PARKING
 - 12 Stalls
- 3** BATTING CAGES
- 4** CONCRETE PATH
- 5** TRAILS
 - Trail material to be determined
- 6** PARKING LOT
 - 218 Stalls
- 7** RESTROOM BUILDING
- 8** BASKETBALL COURT
- 9** FOOTBALL FIELD #1
 - With large bleachers from River Barn Park and potentially field lighting
- 10** FOOTBALL FIELD #2
 - With small bleachers and potentially field lighting
- 11** BLEACHERS
 - From River Barn Park
- 12** STORAGE SHED
 - 10' x 20'
- 13** BLEACHERS
- 14** BERM AT ARCHERY RANGE

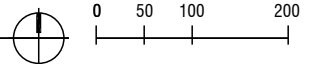
Lemke Park - Concept Plan #1

City of Mequon, Wisconsin



0723 | 2019

ID | 52-0658



PROPOSED FACILITIES

- 1** PARK ENTRANCE DRIVE
 - 24' wide, asphalt
- 2** CONCRETE PATH
 - Construct an 8' concrete or asphalt path connecting park facilities and providing ADA accessibility.
- 3** DROP-OFF CIRCLE
- 4** BASEBALL FIELD
 - 13-year olds and up
 - Outfield dimensions: 300' left field, 325' center field, 300' right field
 - With dugouts, bullpens and bleachers
- 5** BASEBALL FIELD
 - 12-year olds and under
 - Outfield dimensions: 200' left field, 200' center field, 200' right field
 - With dugouts and bleachers
- 6** BATTING CAGES
- 7** TRAILS
 - Trail material to be determined
- 8** BLEACHERS
 - Install bleachers on concrete pads
- 9** CONCESSION/RESTROOM BUILDING
- 10** PARKING LOT
 - 182 stalls
- 11** RELOCATE PLAYGROUND
- 12** BASKETBALL COURT
- 13** FOOTBALL FIELD #1
 - With large bleachers from River Barn Park and potentially with field lighting.
- 14** FOOTBALL FIELD #2
 - With small bleachers and potentially field lighting.
- 15** BLEACHERS
 - From River Barn Park
- 16** STORAGE/RESTROOM BUILDING
- 17** BLEACHERS
- 18** BERM AT ARCHERY RANGE



PROPOSED FACILITIES

- 1 TRAILS**
 - Trail material to be determined
- 2 CONCRETE SIDEWALK**
 - Install 5' concrete sidewalk connecting the existing path on W Donges Bay Rd to the proposed park path network.
- 3 NORTH PARKING LOT**
 - 126 stalls
- 4 CONCRETE PADS**
 - Install concrete pads under bleachers
- 5 CONCRETE PATH**
 - Construct an 8' concrete or asphalt path connecting park facilities and providing ADA accessibility.
- 6 YOUTH BASEBALL FIELD**
 - 12 year-olds and under
 - Field dimensions: 200' LF, 200' CF, 200' RF
- 7 BATTING CAGE**
- 8 SOUTH PARKING LOT**
 - 218 stalls
- 9 BASKETBALL COURT**
- 10 BERM AT ARCHERY RANGE**
- 11 RESTROOM BUILDING**
- 12 FORMALIZE AND SIGN EXISTING NATURAL SURFACE TRAILS**
 - Gravel trails and wayfinding/interpretive signage
- 13 FOOTBALL FIELD #1**
 - With large bleachers from River Barn Park and potentially field lighting
- 14 FOOTBALL FIELD #2**
 - With small bleachers and potentially field lighting
- 15 BLEACHERS**
 - Relocated from River Barn Park
- 16 STORAGE/RESTROOM BUILDING**
- 17 BLEACHERS**



PROPOSED FACILITIES

- 1** BASEBALL FIELD
 - Outfield dimensions: 300' Left, 325' Center, 300' Right
- 2** YOUTH BASEBALL FIELD
 - Outfield dimensions: 200' Left, 200' Center, 200' Right
- 3** BATTING CAGES
- 4** CONCRETE PATH
 - Construct an 8' concrete or asphalt path connecting park facilities and providing ADA accessibility.
- 5** CONCESSION/RESTROOM BUILDING
- 6** NORTH PARKING LOT
 - 191 stalls
- 7** BASKETBALL COURT
- 8** FOOTBALL FIELD #1
 - With small bleachers and potentially field lighting
- 9** FOOTBALL FIELD #2
 - With large bleachers from River Barn Park and potentially field lighting
- 10** SOUTH PARKING LOT
 - 83 stalls
- 11** TRAILS
 - Trail material to be determined
- 12** FORMALIZE AND SIGN EXISTING NATURAL SURFACE TRAILS
 - Convert to gravel trails and add wayfinding and/or interpretive signage
- 13** STORAGE/RESTROOM BUILDING
- 14** PARK ENTRANCE DRIVE
 - 24' wide, asphalt



Appendix C:

Concept Plans – River Barn Park



PROPOSED FACILITIES

- 1** LACROSSE FIELD #1
 - Striped for girls games and practices
- 2** LACROSSE FIELD #2
 - Striped for girls games and practices
- 3** NEW BLEACHERS AND PICNIC TABLES ON CONCRETE PAD
 - To replace Cardinal Football bleachers relocated to Lemke Park
- 4** RELOCATED GIRLS LACROSSE EQUIPMENT SHED
 - Relocated to position shown for parking lot expansion
- 5** PARKING LOT EXPANSION
 - Approximately 60 additional stalls shown in this area
- 6** PARKING LOT EXPANSION
 - Approximately 17 additional stalls shown in this area
- 7** ENTRANCE DRIVE MEDIAN PLANTINGS
- 8** PARKING LOT ALTERATION
 - Cut through existing median to improve traffic flow
- 9** CONCRETE PATH
 - Install concrete path to connect park facilities and provide ADA accessibility
- 10** SOFTBALL PLAZA AREA
 - Hardscape surface for bleachers
- 11** DUGOUT COVERS
 - Install cantilevered shade covers at each dugout
- 12** OUTFIELD FENCING
 - Install permanent fencing at all diamonds
- 13** BOYS LACROSSE EQUIPMENT SHED
 - Install shed to accommodate equipment for boys lacrosse games and practices on fields relocated from Lemke Park
- 14** LACROSSE FIELD #3
 - Striped for boys games and practices
- 15** LACROSSE FIELD #4
 - Striped for boys games and practices
- 16** LACROSSE FIELD #5
 - Striped for boys games and practices



PROPOSED FACILITIES

- 1** LACROSSE FIELD #1
• Striped for girls games and practices
- 2** LACROSSE FIELD #2
• Striped for girls games and practices
- 3** BLEACHERS
• On concrete pad
- 4** RELOCATED GIRLS LACROSSE EQUIPMENT SHED
• Relocated to position shown for parking lot expansion
- 5** PARKING LOT EXPANSION
• Approximately 60 additional stalls shown in this area
- 6** PARKING LOT EXPANSION
• Approximately 15 additional stalls shown in this area
- 7** ENTRANCE DRIVE MEDIAN PLANTINGS
- 8** PARKING LOT ALTERATION
• Cut through existing median to improve traffic flow
- 9** CONCRETE PATH
• Install concrete path to connect park facilities and provide ADA accessibility
- 10** SOFTBALL PLAZA AREA
Hardscape surface for bleachers
- 11** DUGOUT COVERS
• Install cantilevered shade covers at each dugout
- 12** OUTFIELD FENCING
• Install permanent fencing at Field #3 and potentially all diamonds depending on floodplain restrictions
- 13** BOYS LACROSSE EQUIPMENT SHED
• Install shed to accommodate equipment for boys lacrosse games and practices on fields relocated from Lemke Park
- 14** LACROSSE FIELD #3
• Striped for boys games and practices
- 15** LACROSSE FIELD #4
• Striped for boys games and practices
- 16** LACROSSE FIELD #5
• Striped for boys games and practices
- 17** TRAILS
• Trail material to be determined
- 18** RIVER PORTAL
• Canoe/kayak launch with small pier
- 19** DROP-OFF AREA
- 20** EXPANDED PLAYGROUND
- 21** ICE SKATING RINK

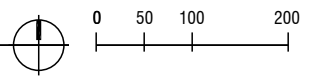
River Barn Park - Concept Plan

City of Mequon, Wisconsin

ID | 52-0658



0725 | 2019

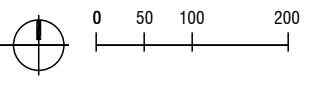




PROPOSED FACILITIES

- 1** LACROSSE FIELD #1
 - Striped for girls games and practices
- 2** LACROSSE FIELD #2
 - Striped for girls games and practices
- 3** BLEACHERS
 - On concrete pad
- 4** RELOCATED GIRLS LACROSSE EQUIPMENT SHED
 - Relocated to position shown for parking lot expansion
- 5** PARKING LOT EXPANSION
 - Approximately 60 additional stalls shown in this area
- 6** PARKING LOT EXPANSION
 - Approximately 15 additional stalls shown in this area
- 7** ENTRANCE DRIVE MEDIAN PLANTINGS
- 8** PARKING LOT ALTERATION
 - Cut through existing median to improve traffic flow
- 9** CONCRETE PATH
 - Install concrete path to connect park facilities and provide ADA accessibility
- 10** SOFTBALL PLAZA AREA
 - Hardscape surface for bleachers
- 11** DUGOUT COVERS
 - Install cantilevered shade covers at each dugout
- 12** OUTFIELD FENCING
 - Install permanent fencing at Field #3 and potentially all diamonds depending on floodplain restrictions
- 13** BOYS LACROSSE EQUIPMENT SHED
 - Install shed to accommodate equipment for boys lacrosse games and practices on fields relocated from Lemke Park
- 14** LACROSSE FIELD #3
 - Striped for boys games and practices
- 15** LACROSSE FIELD #4
 - Striped for boys games and practices
- 16** LACROSSE FIELD #5
 - Striped for boys games and practices
- 17** TRAILS
 - Trail material to be determined
- 18** RIVER PORTAL
 - Canoe/kayak launch with small pier
- 19** DROP-OFF AREA
- 20** EXPANDED PLAYGROUND
- 21** ICE SKATING RINK
- 22** BASKETBALL COURT

River Barn Park - Concept Plan



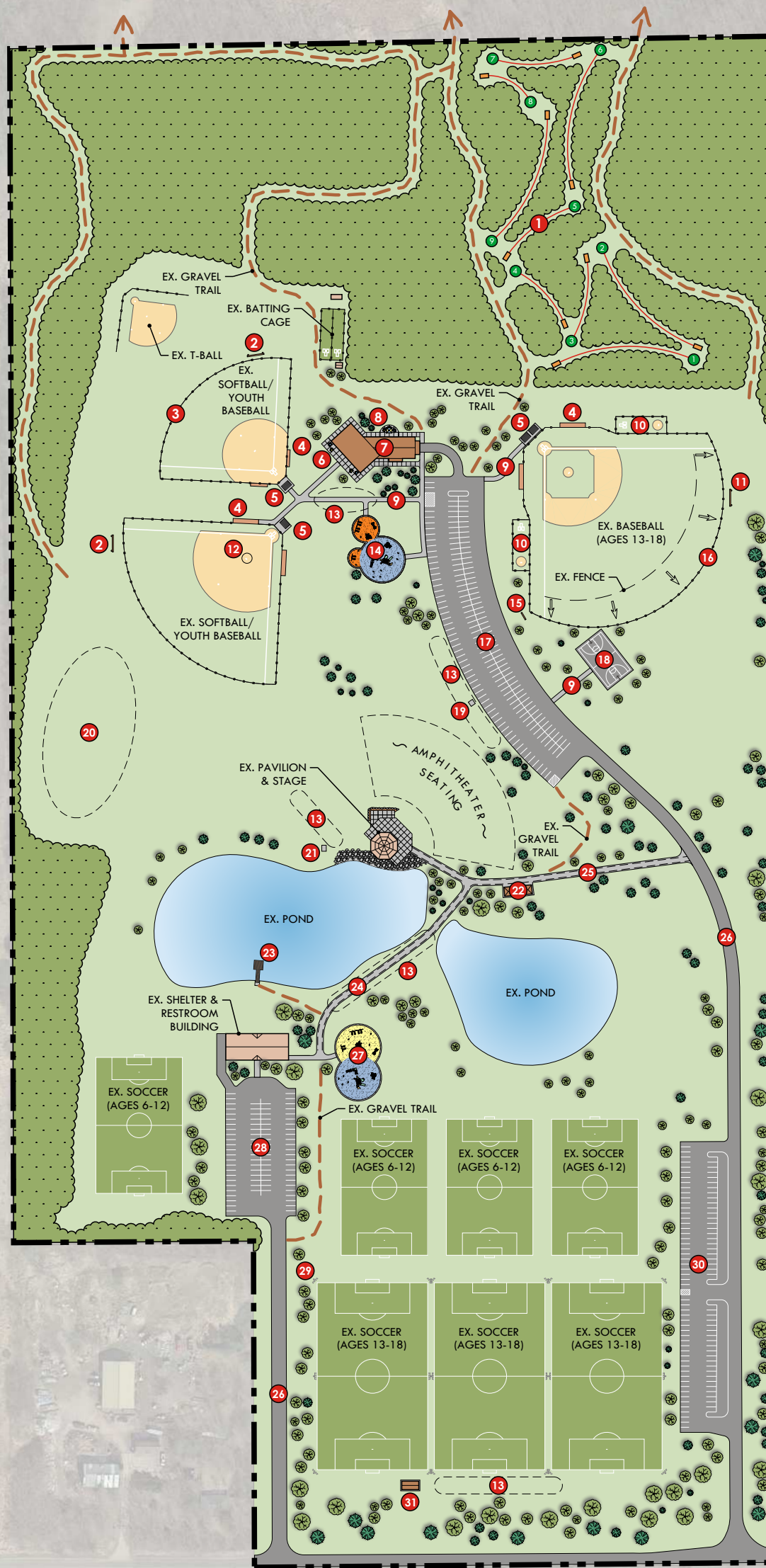


PROPOSED FACILITIES

- 1** LACROSSE FIELD #1
 - Striped for girls games and practices
- 2** LACROSSE FIELD #2
 - Striped for girls games and practices
- 3** BLEACHERS
 - On concrete pad
- 4** RELOCATED GIRLS LACROSSE EQUIPMENT SHED
 - Relocated to position shown for parking lot expansion
- 5** PARKING LOT EXPANSION
 - Approximately 60 additional stalls shown in this area
- 6** PARKING LOT EXPANSION
 - Approximately 15 additional stalls shown in this area
- 7** ENTRANCE DRIVE MEDIAN PLANTINGS
- 8** PARKING LOT ALTERATION
 - Cut through existing median to improve traffic flow
- 9** CONCRETE PATH
 - Install concrete path to connect park facilities and provide ADA accessibility
- 10** SOFTBALL PLAZA AREA
 - Hardscape surface for bleachers
- 11** DUGOUT COVERS
 - Install cantilevered shade covers at each dugout
- 12** OUTFIELD FENCING
 - Install permanent fencing at Field #3 and potentially all diamonds depending on floodplain restrictions
- 13** BOYS LACROSSE EQUIPMENT SHED
 - Install shed to accommodate equipment for boys lacrosse games and practices on fields relocated from Lemke Park
- 14** LACROSSE FIELD #3
 - Striped for boys games and practices
- 15** LACROSSE FIELD #4
 - Striped for boys games and practices
- 16** LACROSSE FIELD #5
 - Striped for boys games and practices
- 17** TRAILS
 - Trail material to be determined
- 18** RIVER PORTAL
 - Canoe/kayak launch with small pier
- 19** DROP-OFF AREA
- 20** EXPANDED PLAYGROUND
- 21** PARKING LOT/ICE SKATING RINK
 - 66 stalls. Convert parking to skating rink in the winter.
- 22** BASKETBALL COURT

Appendix D:

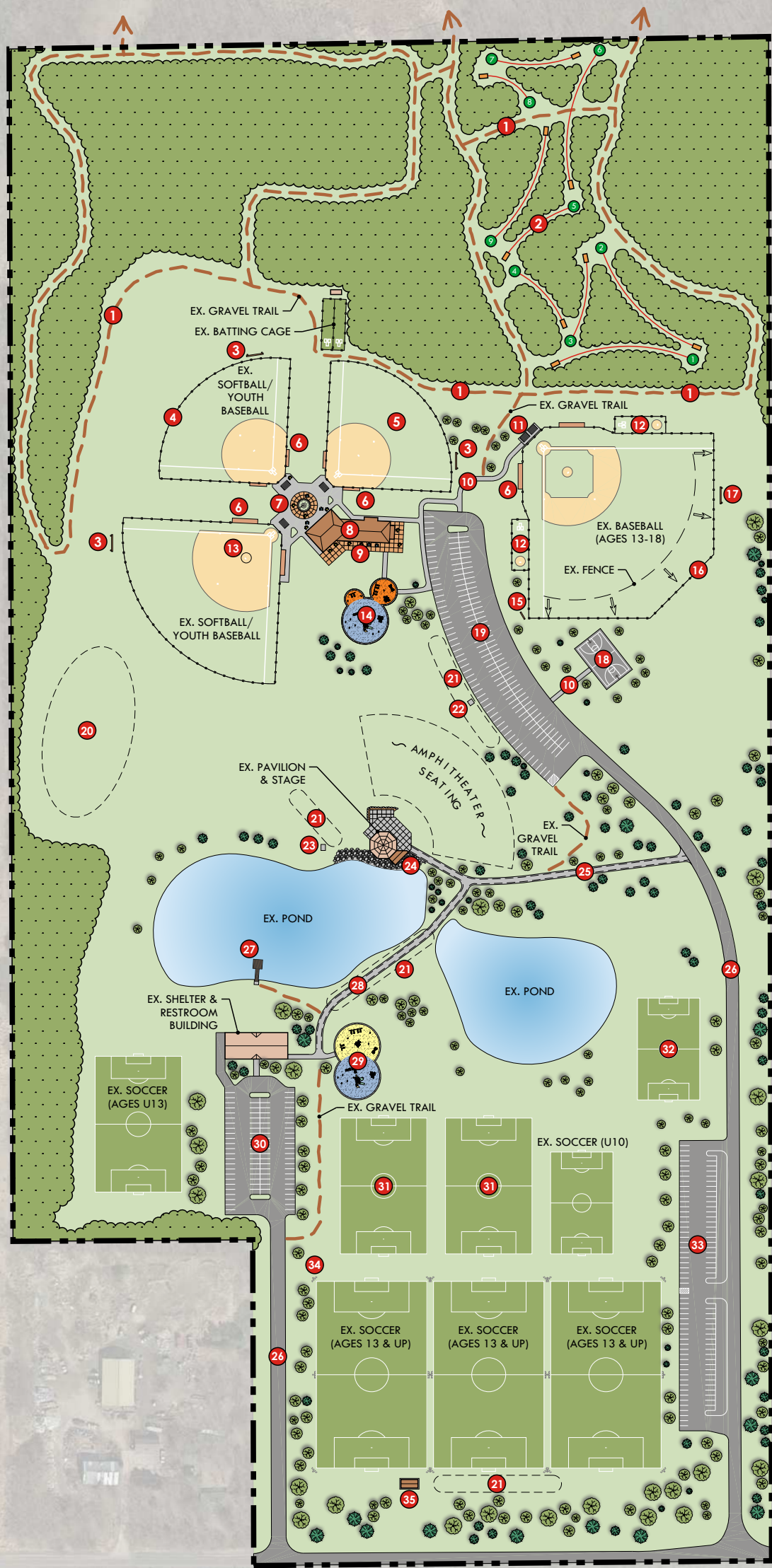
Concept Plans – Rotary Park



HIGHLAND RD

PROPOSED FACILITIES

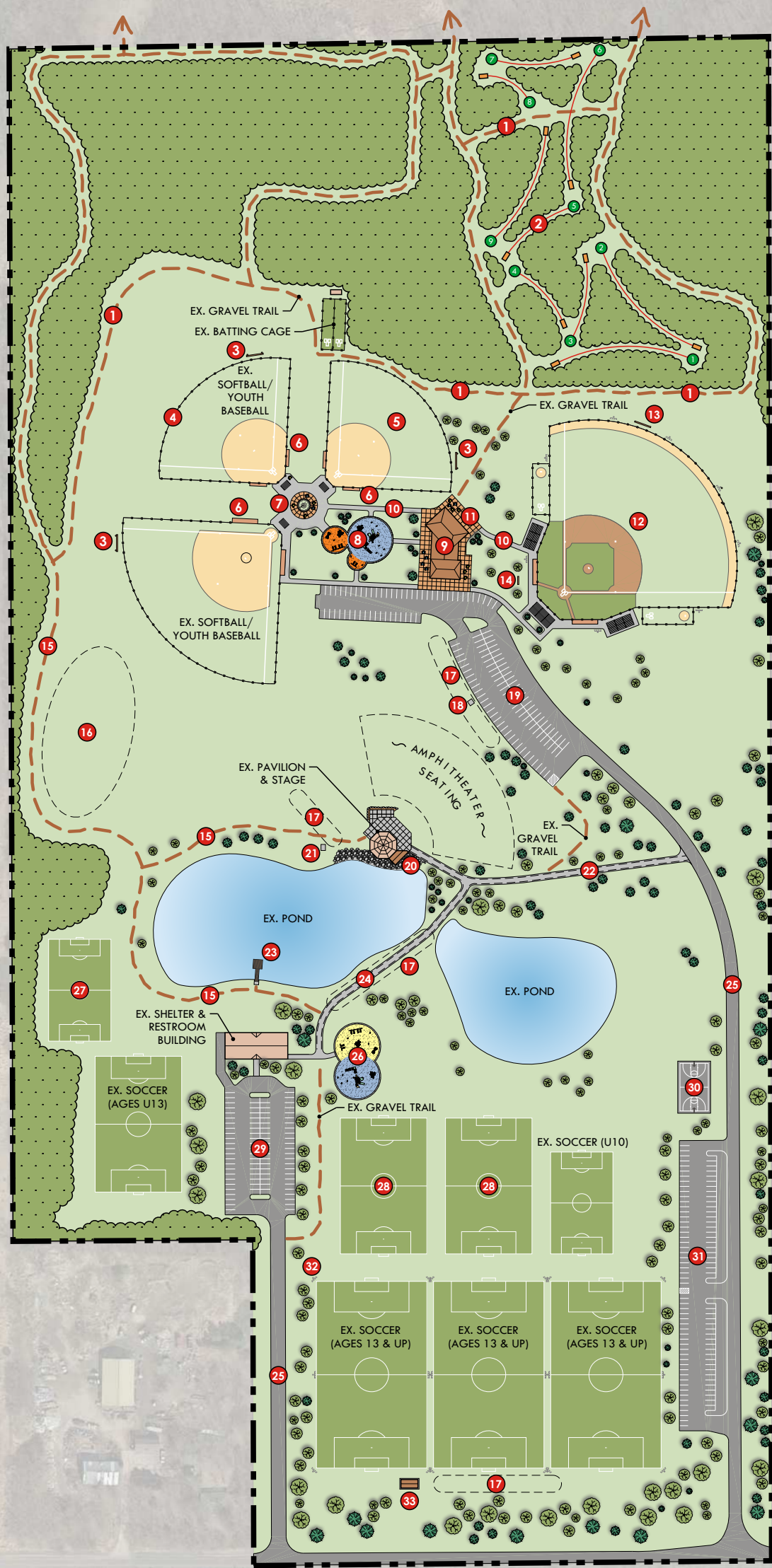
- | | | | |
|--|--|---|--|
| <p>1 DISC GOLF
• Nine-hole course</p> <p>2 SCOREBOARD</p> <p>3 PERMANENT OUTFIELD FENCE
• Outfield dimensions: 200' Left, 200' Center, 200' Right</p> <p>4 DUGOUT COVERS
• Install cantilevered shade covers at each dugout</p> <p>5 CONCRETE PAD
• Install concrete pad under bleachers</p> <p>6 CONCESSION STAND
• Construct a concession stand with plaza area and restrooms as a part of the new indoor/outdoor shelter building</p> <p>7 INDOOR/OUTDOOR SHELTER
• Replace the existing Reuter Pavilion with a more modern, aesthetically pleasing and functional structure. Amenities could include air conditioning, kitchen space, and storage. Consider garage-type doors for conversion of space from outdoor to indoor.</p> | <p>8 PLAZA AREA
• Picnic tables and shade structure</p> <p>9 CONCRETE PATH
• Construct an 8' concrete or asphalt path connecting park facilities and providing ADA accessibility.</p> <p>10 BULLPENS</p> <p>11 SCOREBOARD
• Controlled by mobile application</p> <p>12 PITCHER'S MOUND
• Baseball is the main use of this field but it currently has no pitcher's mound.</p> <p>13 DRAINAGE ISSUE
• This area does not drain well. Consider re-grading this area or installing under drain.</p> <p>14 PLAYGROUND IMPROVEMENTS
• Replace play equipment and install safety surfacing. Include ADA accessible amenities.</p> <p>15 REPAIR OR REPLACE SCHMIT FIELD SIGN</p> | <p>16 MOVE OUTFIELD FENCE
• Current outfield fence dimensions (261 LF, 290 CF, 261 RF) are too short for high school age play. Move fence to 300 LF, 350 CF, 300 RF.</p> <p>17 RE-PAVE & RE-STRIPE NORTH PARKING LOT</p> <p>18 SEAL CRACKS IN BASKETBALL SURFACE, RESURFACE AND RE-STRIPE.</p> <p>19 UPGRADE POWER SERVICE
• Power currently provided is insufficient to meet the needs of the Gathering on the Green festival. Install an additional 100-amp, 120/240 volt, single phase service.</p> <p>20 GRADE AREA FOR A SLEDDING HILL</p> <p>21 UPGRADE POWER SERVICE
• Power currently provided is insufficient to meet the needs of the Gathering on the Green festival. Upgrade to a 400-amp, 120/208volt, 3-phase service.</p> <p>22 RESTROOM/SPECIAL EVENT BUILDING</p> <p>23 REPLACE FISHING PIER</p> | <p>24 CONCRETE PATH
• Convert existing 8' gravel path to an 8' concrete or asphalt path.</p> <p>25 CONCRETE PATH/ACCESS DRIVE
• Convert existing 8' asphalt path to a 12' concrete or asphalt path and stage access drive.</p> <p>26 RE-PAVE PARK ROADS</p> <p>27 INCLUSIVE PLAYGROUND
• Replace existing playground with inclusive play equipment. Provide ADA accessibility.</p> <p>28 RE-PAVE & RE-STRIPE SOUTHWEST PARKING LOT</p> <p>29 INSTALL FIELD LIGHTING AT 3 LARGE SOCCER FIELDS</p> <p>30 RE-PAVE & RE-STRIPE SOUTHWEST PARKING LOT</p> <p>31 INSTALL SMALL RESTROOM/STORAGE BUILDING</p> |
|--|--|---|--|



HIGHLAND RD

PROPOSED FACILITIES

- | | | | |
|---|--|--|--|
| <p>1 GRAVEL TRAIL</p> <ul style="list-style-type: none"> Complete gaps in trail network at Pukaite Woods to create hiking loops <p>2 DISC GOLF</p> <ul style="list-style-type: none"> Nine-hole course <p>3 SCOREBOARD</p> <p>4 PERMANENT OUTFIELD FENCE</p> <ul style="list-style-type: none"> Outfield dimensions: 200' Left, 200' Center, 200' Right <p>5 SOFTBALL/YOUTH BASEBALL FIELD</p> <ul style="list-style-type: none"> Outfield dimensions: 200' Left, 200' Center, 200' Right <p>6 DUGOUT COVERS</p> <ul style="list-style-type: none"> Install cantilevered shade covers at each dugout <p>7 PLAZA AT BALLFIELDS</p> <ul style="list-style-type: none"> Hardscape area to include bleachers, picnic tables, planters and flagpole <p>8 INDOOR/OUTDOOR SHELTER</p> <ul style="list-style-type: none"> Replace the existing Reuter Pavilion with a more modern, aesthetically pleasing and functional structure. Amenities could include air conditioning, kitchen space, and storage. Consider garage-type doors for conversion of space from outdoor to indoor. | <p>9 PLAZA AREA</p> <p>10 CONCRETE PATH</p> <ul style="list-style-type: none"> Construct an 8' concrete or asphalt path connecting park facilities and providing ADA accessibility. <p>11 CONCRETE PAD</p> <ul style="list-style-type: none"> Install concrete pad under bleachers <p>12 BULLPENS</p> <p>13 PITCHER'S MOUND</p> <ul style="list-style-type: none"> Baseball is the main use of this field but it currently has no pitcher's mound. <p>14 PLAYGROUND IMPROVEMENTS</p> <ul style="list-style-type: none"> Replace play equipment and install safety surfacing. Include ADA accessible amenities. <p>15 REPAIR OR REPLACE SCHMIT FIELD SIGN</p> <p>16 MOVE OUTFIELD FENCE</p> <ul style="list-style-type: none"> Current outfield fence dimensions (261 LF, 290 CF, 261 RF) are too short for high school age play. Move fence to 300 LF, 345 CF, 300 RF. <p>17 SCOREBOARD</p> <ul style="list-style-type: none"> Controlled by mobile application | <p>18 SEAL CRACKS IN BASKETBALL SURFACE, RESURFACE AND RE-STRIP.</p> <p>19 RE-PAVE & RE-STRIP NORTH PARKING LOT</p> <p>20 GRADE AREA FOR A SLEDDING HILL</p> <p>21 DRAINAGE ISSUE</p> <ul style="list-style-type: none"> This area does not drain well. Consider re-grading this area or installing under drain. <p>22 UPGRADE POWER SERVICE</p> <ul style="list-style-type: none"> Power currently provided is insufficient to meet the needs of the Gathering on the Green festival. Install an additional 100-amp, 120/240 volt, single phase service. <p>23 UPGRADE POWER SERVICE</p> <ul style="list-style-type: none"> Power currently provided is insufficient to meet the needs of the Gathering on the Green festival. Upgrade to a 400-amp, 120/208volt, 3-phase service. <p>24 RESTROOM BUILDING</p> <ul style="list-style-type: none"> Install small restroom building adjacent to existing pavilion and stage. <p>25 CONCRETE PATH/ACCESS DRIVE</p> <ul style="list-style-type: none"> Convert exiting 8' asphalt path to a 12' concrete or asphalt path and stage access drive. | <p>26 RE-PAVE PARK ROADS</p> <p>27 REPLACE FISHING PIER</p> <p>28 CONCRETE PATH</p> <ul style="list-style-type: none"> Convert existing 8' gravel path to an 8' concrete or asphalt path. <p>29 INCLUSIVE PLAYGROUND</p> <ul style="list-style-type: none"> Replace existing playground with inclusive play equipment. Provide ADA accessibility. <p>30 RE-PAVE & RE-STRIP SOUTHWEST PARKING LOT</p> <p>31 CONVERT EXISTING U10 SOCCER FIELD TO A U13 SOCCER FIELD</p> <p>32 SOCCER FIELD (U10)</p> <p>33 RE-PAVE & RE-STRIP SOUTHEAST PARKING LOT</p> <p>34 INSTALL FIELD LIGHTING AT 3 LARGE SOCCER FIELDS</p> <p>35 INSTALL SMALL RESTROOM/STORAGE BUILDING</p> |
|---|--|--|--|



PROPOSED FACILITIES

- | | | | |
|--|---|---|--|
| <p>1 GRAVEL TRAIL</p> <ul style="list-style-type: none"> Complete gaps in trail network at Pukaite Woods to create hiking loops <p>2 DISC GOLF</p> <ul style="list-style-type: none"> Nine-hole course <p>3 SCOREBOARD</p> <p>4 PERMANENT OUTFIELD FENCE</p> <ul style="list-style-type: none"> Outfield dimensions: 200' Left, 200' Center, 200' Right <p>5 SOFTBALL/YOUTH BASEBALL FIELD</p> <ul style="list-style-type: none"> Outfield dimensions: 200' Left, 200' Center, 200' Right <p>6 DUGOUT COVERS</p> <ul style="list-style-type: none"> Install cantilevered shade covers at each dugout <p>7 PLAZA AT BALLFIELDS</p> <ul style="list-style-type: none"> Hardscape area to include bleachers, picnic tables, planters and flagpole <p>8 PLAYGROUND IMPROVEMENTS</p> <ul style="list-style-type: none"> Replace play equipment and install safety surfacing. Include ADA accessible amenities. | <p>9 INDOOR/OUTDOOR SHELTER</p> <ul style="list-style-type: none"> Replace the existing Reuter Pavilion with a more modern, aesthetically pleasing and functional structure. Amenities could include air conditioning, kitchen space, and storage. Consider garage-type doors for conversion of space from outdoor to indoor. <p>10 CONCRETE PATH</p> <ul style="list-style-type: none"> Construct an 8' concrete or asphalt path connecting park facilities and providing ADA accessibility. <p>11 PLAZA AREA</p> <p>12 BASEBALL FIELD</p> <ul style="list-style-type: none"> Full size baseball field with artificial turf infield. Include dugouts, bullpens, bleachers and lights. <p>13 SCOREBOARD</p> <ul style="list-style-type: none"> Controlled by mobile application <p>14 REPAIR AND RELOCATE SCHMIT FIELD SIGN</p> <p>15 GRAVEL TRAIL</p> <p>16 GRADE AREA FOR A SLEDDING HILL</p> | <p>17 DRAINAGE ISSUE</p> <ul style="list-style-type: none"> This area does not drain well. Consider re-grading this area or installing under drain. <p>18 UPGRADE POWER SERVICE</p> <ul style="list-style-type: none"> Power currently provided is insufficient to meet the needs of the Gathering on the Green festival. Install an additional 100-amp, 120/240 volt, single phase service. <p>19 RE-PAVE & RE-STRIPE NORTH PARKING LOT</p> <p>20 RESTROOM BUILDING</p> <ul style="list-style-type: none"> Install small restroom building adjacent to existing pavilion and stage. <p>21 UPGRADE POWER SERVICE</p> <ul style="list-style-type: none"> Power currently provided is insufficient to meet the needs of the Gathering on the Green festival. Upgrade to a 400-amp, 120/208volt, 3-phase service. <p>22 CONCRETE PATH/ACCESS DRIVE</p> <ul style="list-style-type: none"> Convert exiting 8' asphalt path to a 12' concrete or asphalt path and stage access drive. <p>23 REPLACE FISHING PIER</p> | <p>24 CONCRETE PATH</p> <ul style="list-style-type: none"> Convert existing 8' gravel path to an 8' concrete or asphalt path. <p>25 RE-PAVE PARK ROADS</p> <p>26 INCLUSIVE PLAYGROUND</p> <ul style="list-style-type: none"> Replace existing playground with inclusive play equipment. Provide ADA accessibility. <p>27 SOCCER FIELD (U10)</p> <p>28 CONVERT EXISTING U10 SOCCER FIELD TO A U13 SOCCER FIELD</p> <p>29 RE-PAVE & RE-STRIPE SOUTHWEST PARKING LOT</p> <p>30 BASKETBALL COURT</p> <p>31 RE-PAVE & RE-STRIPE SOUTHEAST PARKING LOT</p> <p>32 INSTALL FIELD LIGHTING AT 3 LARGE SOCCER FIELDS</p> <p>33 INSTALL SMALL RESTROOM/STORAGE BUILDING</p> |
|--|---|---|--|

Appendix E:

Preferred Concept Plans – Lemke Park, River Barn Park
& Rotary Park

PROPOSED FACILITIES

- 1** NORTH PARKING LOT
 - 125 stalls
- 2** CENTRAL PARKING LOT
 - 25 stalls
- 3** SOUTH PARKING LOT
 - 52 stalls
- 4** YOUTH BASEBALL FIELD
 - 12 year-olds and under
 - Field dimensions: 200' LF, 200' CF, 200' RF
- 5** BASKETBALL COURT
- 6** STORAGE/RESTROOM BUILDING
- 7** CONCRETE PATH
 - Construct an 8' concrete or asphalt path connecting park facilities and providing ADA accessibility.
- 8** CONCRETE PADS
 - Install concrete pads under bleachers
- 9** TRAILS
 - Trail material to be determined
- 10** PARK ENTRANCE DRIVE
 - 24' wide, asphalt
- 11** FOOTBALL FIELD #1
 - With large bleachers from River Barn Park and potentially field lighting
- 12** FOOTBALL FIELD #2
 - With small bleachers and potentially field lighting
- 13** POTENTIAL RELOCATED ARCHERY
 - Consider relocation to another park
- 14** SHELTER
- 15** BASEBALL FIELD IMPROVEMENTS
 - Grass infield and raise pitcher's mound
- 16** BASEBALL PLAZA
 - Hardscape area with concession/restroom building
- 17** BATTING CAGES
- 18** DROP-OFF CIRCLE
- 19** STORAGE SHED
 - 10' x 20'
- 20** SCOREBOARD
 - Relocated from River Barn Park
- 21** WATER TROUGHS
 - Moveable drinking water units
- 22** RIVER RESTORATION & STORMWATER MANAGEMENT



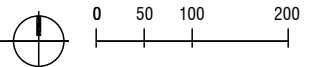
Lemke Park - Preferred Concept Plan

City of Mequon, Wisconsin



1014 | 2019

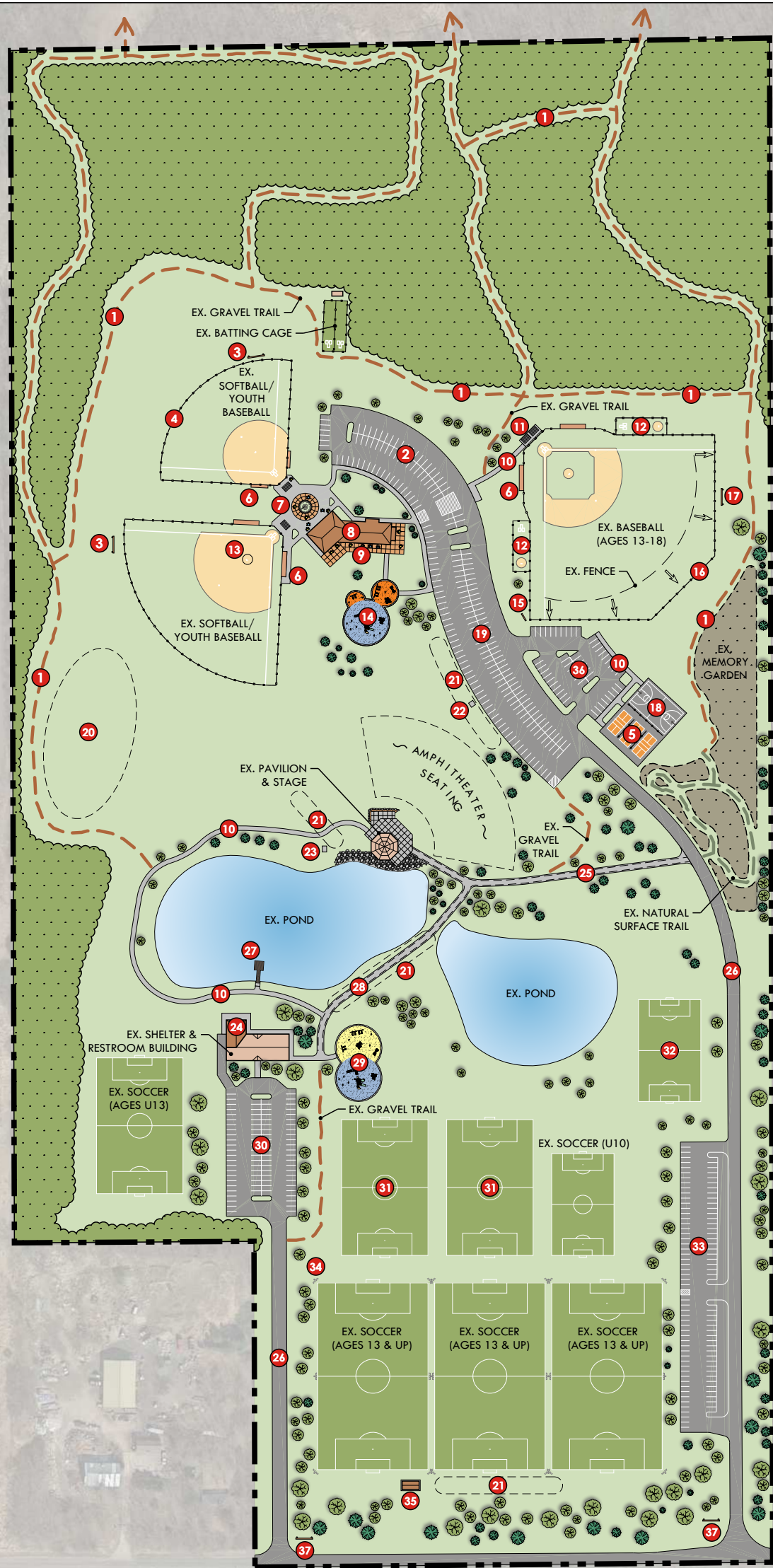
ID | 52-0658





PROPOSED FACILITIES

- 1** LACROSSE FIELD #1
 - Striped for girls games and practices
- 2** LACROSSE FIELD #2
 - Striped for girls games and practices
- 3** BLEACHERS
 - On concrete pad
- 4** RELOCATED GIRLS LACROSSE EQUIPMENT SHED
 - Relocated to position shown for parking lot expansion
- 5** PARKING LOT EXPANSION
 - Approximately 60 additional stalls shown in this area
- 6** PARKING LOT EXPANSION
 - Approximately 15 additional stalls shown in this area
- 7** ENTRANCE DRIVE MEDIAN PLANTINGS
- 8** PARKING LOT ALTERATION
 - Cut through existing median to improve traffic flow
- 9** CONCRETE PATH
 - Install concrete path to connect park facilities and provide ADA accessibility
- 10** SOFTBALL PLAZA AREA
 - Hardscape surface for bleachers
- 11** DUGOUT COVERS
 - Install cantilevered shade covers at each dugout
- 12** OUTFIELD FENCING
 - Install permanent fencing at Field #3 and potentially all diamonds depending on floodplain restrictions
- 13** BOYS LACROSSE EQUIPMENT SHED
 - Install shed to accommodate equipment for boys lacrosse games and practices on fields relocated from Lemke Park
- 14** LACROSSE FIELD #3
 - Striped for boys games and practices
- 15** LACROSSE FIELD #4
 - Striped for boys games and practices
- 16** LACROSSE FIELD #5
 - Striped for boys games and practices
- 17** TRAILS
 - Trail material to be determined
- 18** RIVER PORTAL
 - Canoe/kayak launch with small pier
- 19** DROP-OFF AREA
- 20** EXPANDED PLAYGROUND
- 21** PARKING LOT/ICE SKATING RINK
 - 30 stalls. Convert parking to skating rink in the winter.
- 22** PARKING LOT
 - 63 stalls
- 23** BASKETBALL COURT WITH PICKLEBALL STRIPING
- 24** PARKING LIGHTING



PROPOSED FACILITIES

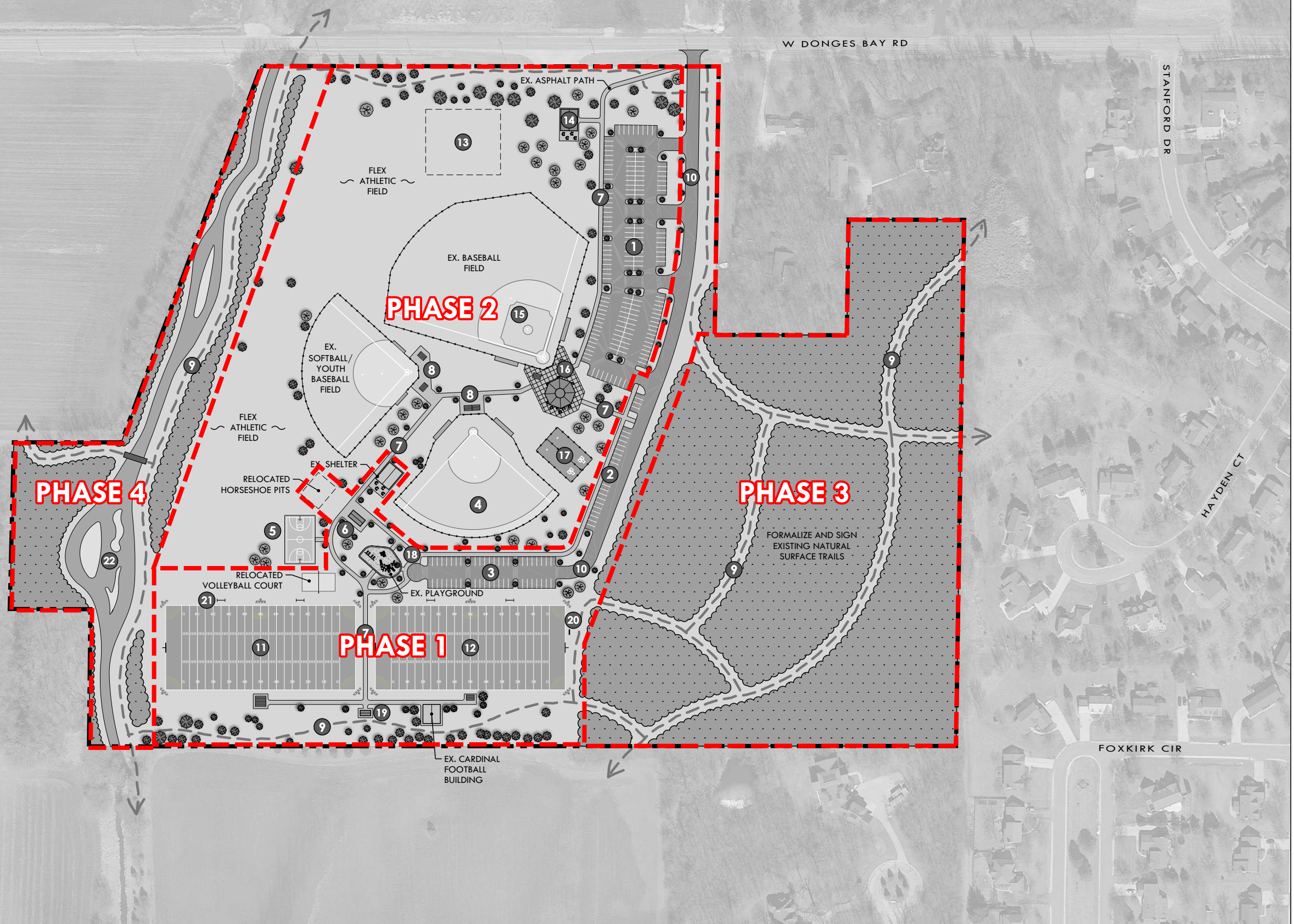
- | | | | |
|---|---|--|--|
| <p>1 GRAVEL TRAIL</p> <ul style="list-style-type: none"> Complete gaps in trail network at Pukaite Woods to create hiking loops <p>2 PARKING EXPANSION - NORTH</p> <ul style="list-style-type: none"> ~ 68 Stalls <p>3 SCOREBOARD</p> <p>4 PERMANENT OUTFIELD FENCE</p> <ul style="list-style-type: none"> Outfield dimensions: 200' Left, 200' Center, 200' Right <p>5 PICKLEBALL COURTS</p> <p>6 DUGOUT COVERS</p> <ul style="list-style-type: none"> Install cantilevered shade covers at each dugout <p>7 PLAZA AT BALLFIELDS</p> <ul style="list-style-type: none"> Hardscape area to include bleachers, picnic tables, planters and flagpole <p>8 INDOOR/OUTDOOR SHELTER</p> <ul style="list-style-type: none"> Replace the existing Reuter Pavilion with a more modern, aesthetically pleasing and functional structure. Amenities could include air conditioning, kitchen space, and storage. Consider garage-type doors for conversion of space from outdoor to indoor. <p>9 PLAZA AREA</p> | <p>10 CONCRETE PATH</p> <ul style="list-style-type: none"> Construct an 8' concrete or asphalt path connecting park facilities and providing ADA accessibility. <p>11 CONCRETE PAD</p> <ul style="list-style-type: none"> Install concrete pad under bleachers <p>12 BULLPENS</p> <p>13 PITCHER'S MOUND</p> <ul style="list-style-type: none"> Baseball is the main use of this field but it currently has no pitcher's mound. <p>14 PLAYGROUND IMPROVEMENTS</p> <ul style="list-style-type: none"> Replace play equipment and install safety surfacing. Include ADA accessible amenities. <p>15 REPAIR OR REPLACE SCHMIT FIELD SIGN</p> <p>16 MOVE OUTFIELD FENCE</p> <ul style="list-style-type: none"> Current outfield fence dimensions (261 LF, 290 CF, 261 RF) are too short for high school age play. Move fence to 300 LF, 345 CF, 300 RF. <p>17 SCOREBOARD</p> <ul style="list-style-type: none"> Controlled by mobile application <p>18 BASKETBALL COURT</p> | <p>19 RE-PAVE & RE-STRIPE NORTH PARKING LOT</p> <ul style="list-style-type: none"> ~147 STALLS <p>20 GRADE AREA FOR A SLEDDING HILL</p> <p>21 DRAINAGE ISSUE</p> <ul style="list-style-type: none"> This area does not drain well. Consider re-grading this area or installing under drain. <p>22 UPGRADE POWER SERVICE</p> <ul style="list-style-type: none"> Power currently provided is insufficient to meet the needs of the Gathering on the Green festival. Install an additional 100-amp, 120/240 volt, single phase service. <p>23 UPGRADE POWER SERVICE</p> <ul style="list-style-type: none"> Power currently provided is insufficient to meet the needs of the Gathering on the Green festival. Upgrade to a 400-amp, 120/208volt, 3-phase service. <p>24 SHELTER ADDITION</p> <p>25 CONCRETE PATH/ACCESS DRIVE</p> <ul style="list-style-type: none"> Convert existing 8' asphalt path to a 12' concrete or asphalt path and stage access drive. <p>26 RE-PAVE PARK ROADS</p> <p>27 REPLACE FISHING PIER</p> | <p>28 CONCRETE PATH</p> <ul style="list-style-type: none"> Convert existing 8' gravel path to an 8' concrete or asphalt path. <p>29 INCLUSIVE PLAYGROUND</p> <ul style="list-style-type: none"> Replace existing playground with inclusive play equipment. Provide ADA accessibility. <p>30 RE-PAVE & RE-STRIPE SOUTHWEST PARKING LOT</p> <p>31 CONVERT EXISTING U10 SOCCER FIELD TO A U13 SOCCER FIELD</p> <p>32 SOCCER FIELD (U10)</p> <p>33 RE-PAVE & RE-STRIPE SOUTHEAST PARKING LOT</p> <p>34 INSTALL FIELD LIGHTING AT 3 LARGE SOCCER FIELDS</p> <p>35 INSTALL SMALL RESTROOM/STORAGE BUILDING</p> <p>36 NEW PARKING LOT</p> <ul style="list-style-type: none"> ~53 STALLS <p>37 PARK I.D./WAYFINDING SIGNAGE</p> |
|---|---|--|--|

Appendix F:

Phasing Plans

PROPOSED FACILITIES

- 1 NORTH PARKING LOT
• 125 stalls
- 2 CENTRAL PARKING LOT
• 25 stalls
- 3 SOUTH PARKING LOT
• 52 stalls
- 4 YOUTH BASEBALL FIELD
• 12 year-olds and under
• Field dimensions: 200' LF, 200' CF, 200' RF
- 5 BASKETBALL COURT
- 6 STORAGE/RESTROOM BUILDING
- 7 CONCRETE PATH
• Construct an 8' concrete or asphalt path connecting park facilities and providing ADA accessibility.
- 8 CONCRETE PADS
• Install concrete pads under bleachers
- 9 TRAILS
• Trail material to be determined
- 10 PARK ENTRANCE DRIVE
• 24' wide, asphalt
- 11 FOOTBALL FIELD #1
• With large bleachers from River Barn Park and potentially field lighting
- 12 FOOTBALL FIELD #2
• With small bleachers and potentially field lighting
- 13 POTENTIAL RELOCATED ARCHERY
• Consider relocation to another park
- 14 SHELTER
- 15 BASEBALL FIELD IMPROVEMENTS
• Grass infield and raise pitcher's mound
- 16 BASEBALL PLAZA
• Hardscape area with concession/restroom building
- 17 BATTING CAGES
- 18 DROP-OFF CIRCLE
- 19 STORAGE SHED
• 10' x 20'
- 20 SCOREBOARD
• Relocated from River Barn Park
- 21 WATER TROUGHS
• Moveable drinking water units
- 22 RIVER RESTORATION & STORMWATER MANAGEMENT



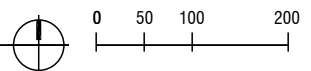
Lemke Park - Phasing Plan

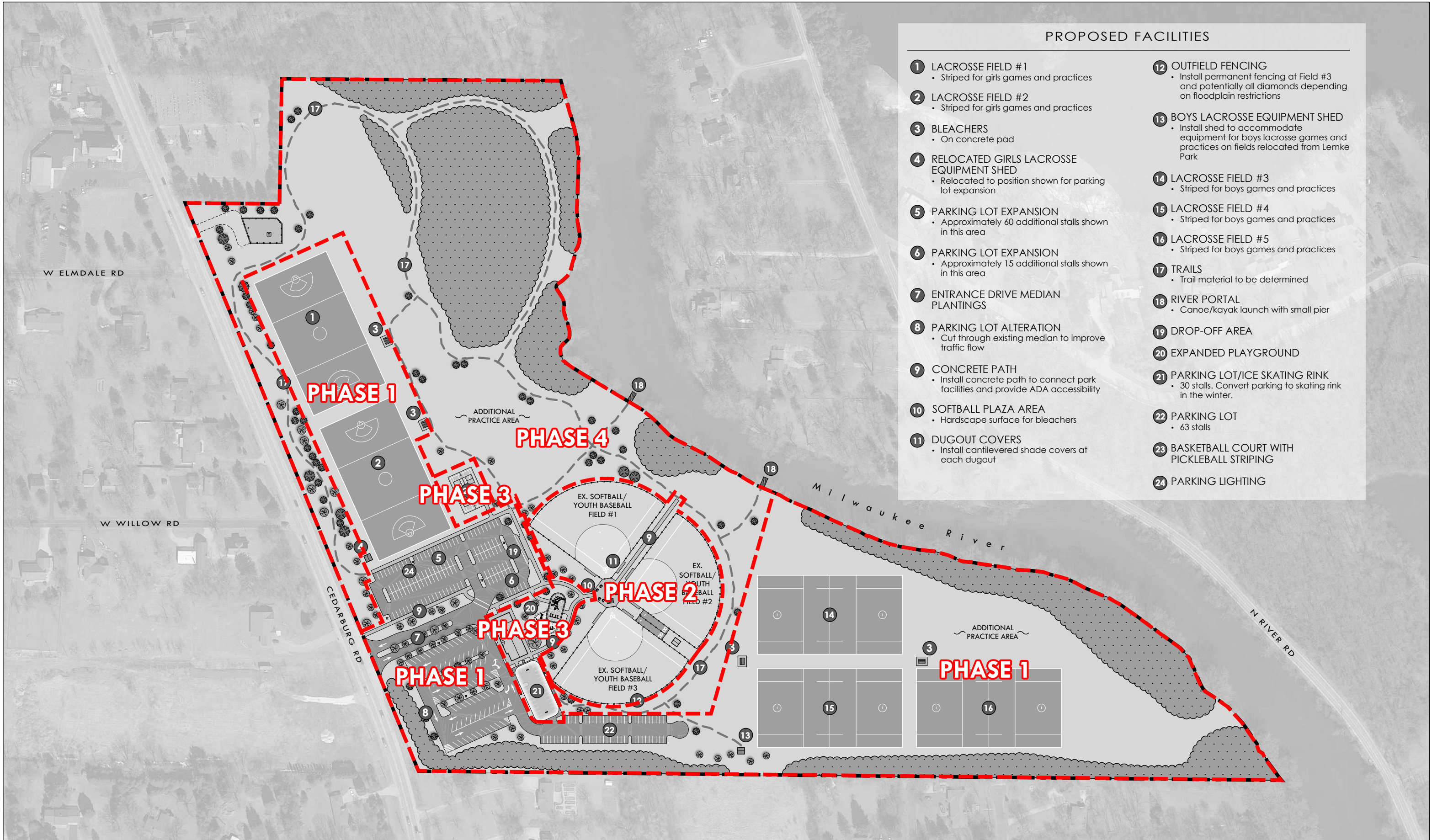
City of Mequon, Wisconsin



ID | 52-0658

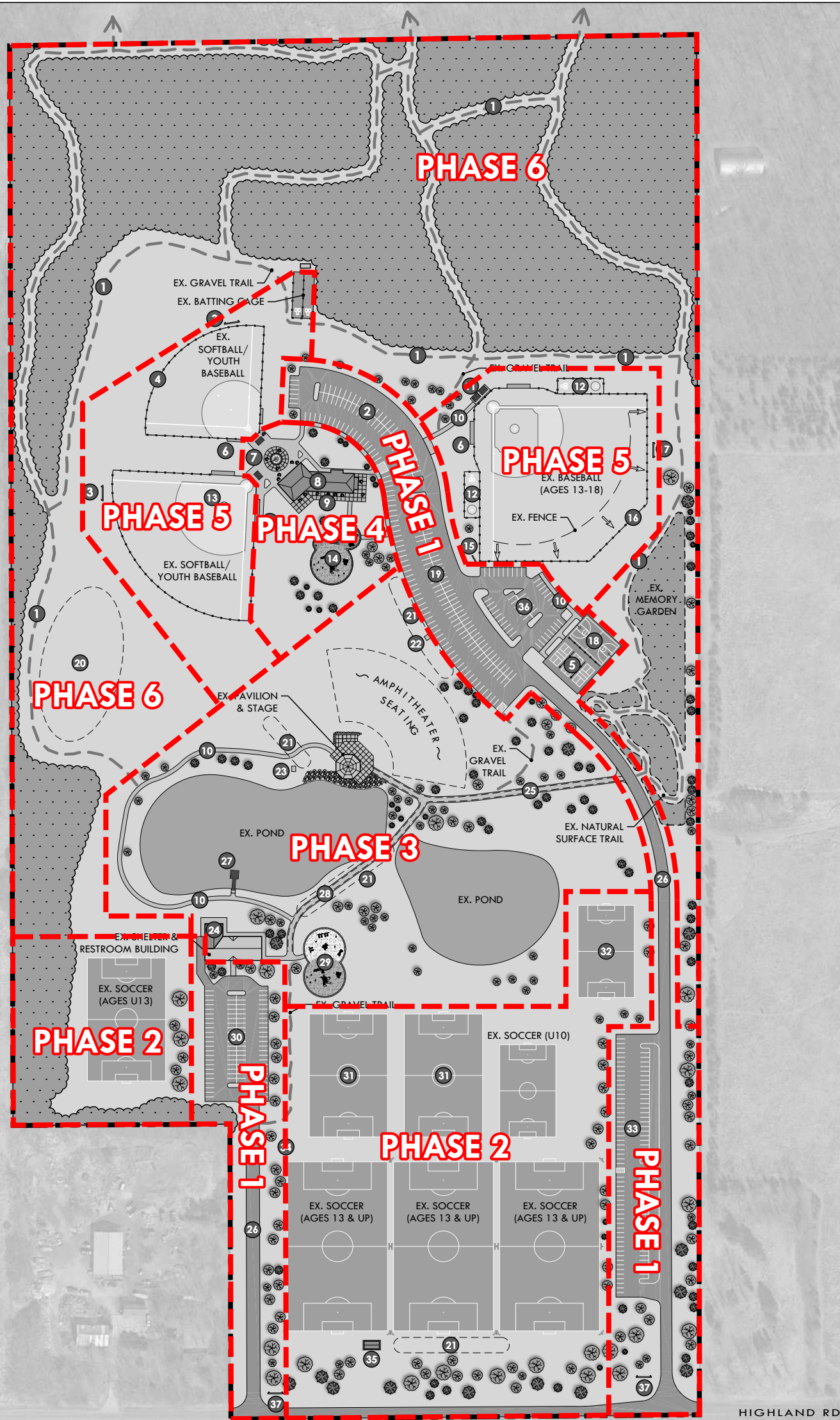
1017 | 2019





PROPOSED FACILITIES

- 1** LACROSSE FIELD #1
• Striped for girls games and practices
- 2** LACROSSE FIELD #2
• Striped for girls games and practices
- 3** BLEACHERS
• On concrete pad
- 4** RELOCATED GIRLS LACROSSE EQUIPMENT SHED
• Relocated to position shown for parking lot expansion
- 5** PARKING LOT EXPANSION
• Approximately 60 additional stalls shown in this area
- 6** PARKING LOT EXPANSION
• Approximately 15 additional stalls shown in this area
- 7** ENTRANCE DRIVE MEDIAN PLANTINGS
- 8** PARKING LOT ALTERATION
• Cut through existing median to improve traffic flow
- 9** CONCRETE PATH
• Install concrete path to connect park facilities and provide ADA accessibility
- 10** SOFTBALL PLAZA AREA
• Hardscape surface for bleachers
- 11** DUGOUT COVERS
• Install cantilevered shade covers at each dugout
- 12** OUTFIELD FENCING
• Install permanent fencing at Field #3 and potentially all diamonds depending on floodplain restrictions
- 13** BOYS LACROSSE EQUIPMENT SHED
• Install shed to accommodate equipment for boys lacrosse games and practices on fields relocated from Lemke Park
- 14** LACROSSE FIELD #3
• Striped for boys games and practices
- 15** LACROSSE FIELD #4
• Striped for boys games and practices
- 16** LACROSSE FIELD #5
• Striped for boys games and practices
- 17** TRAILS
• Trail material to be determined
- 18** RIVER PORTAL
• Canoe/kayak launch with small pier
- 19** DROP-OFF AREA
- 20** EXPANDED PLAYGROUND
- 21** PARKING LOT/ICE SKATING RINK
• 30 stalls. Convert parking to skating rink in the winter.
- 22** PARKING LOT
• 63 stalls
- 23** BASKETBALL COURT WITH PICKLEBALL STRIPING
- 24** PARKING LIGHTING



PROPOSED FACILITIES

- | | | | |
|---|---|--|--|
| <p>1 GRAVEL TRAIL
• Complete gaps in trail network at Pukaite Woods to create hiking loops</p> <p>2 PARKING EXPANSION - NORTH
• ~ 68 Stalls</p> <p>3 SCOREBOARD</p> <p>4 PERMANENT OUTFIELD FENCE
• Outfield dimensions:
200' Left, 200' Center, 200' Right</p> <p>5 PICKLEBALL COURTS</p> <p>6 DUGOUT COVERS
• Install cantilevered shade covers at each dugout</p> <p>7 PLAZA AT BALLFIELDS
• Hardscape area to include bleachers, picnic tables, planters and flagpole</p> <p>8 INDOOR/OUTDOOR SHELTER
• Replace the existing Reuter Pavilion with a more modern, aesthetically pleasing and functional structure. Amenities could include air conditioning, kitchen space, and storage. Consider garage-type doors for conversion of space from outdoor to indoor.</p> <p>9 PLAZA AREA</p> | <p>10 CONCRETE PATH
• Construct an 8' concrete or asphalt path connecting park facilities and providing ADA accessibility.</p> <p>11 CONCRETE PAD
• Install concrete pad under bleachers</p> <p>12 BULLPENS</p> <p>13 PITCHER'S MOUND
• Baseball is the main use of this field but it currently has no pitcher's mound.</p> <p>14 PLAYGROUND IMPROVEMENTS
• Replace play equipment and install safety surfacing. Include ADA accessible amenities.</p> <p>15 REPAIR OR REPLACE SCHMIT FIELD SIGN</p> <p>16 MOVE OUTFIELD FENCE
• Current outfield fence dimensions (261 LF, 290 CF, 261 RF) are too short for high school age play. Move fence to 300 LF, 345 CF, 300 RF.</p> <p>17 SCOREBOARD
• Controlled by mobile application</p> <p>18 BASKETBALL COURT</p> | <p>19 RE-PAVE & RE-STRIPE NORTH PARKING LOT
• ~147 STALLS</p> <p>20 GRADE AREA FOR A SLEDDING HILL</p> <p>21 DRAINAGE ISSUE
• This area does not drain well. Consider re-grading this area or installing under drain.</p> <p>22 UPGRADE POWER SERVICE
• Power currently provided is insufficient to meet the needs of the Gathering on the Green festival. Install an additional 100-amp, 120/240 volt, single phase service.</p> <p>23 UPGRADE POWER SERVICE
• Power currently provided is insufficient to meet the needs of the Gathering on the Green festival. Upgrade to a 400-amp, 120/208volt, 3-phase service.</p> <p>24 SHELTER ADDITION</p> <p>25 CONCRETE PATH/ACCESS DRIVE
• Convert existing 8' asphalt path to a 12' concrete or asphalt path and stage access drive.</p> <p>26 RE-PAVE PARK ROADS</p> <p>27 REPLACE FISHING PIER</p> | <p>28 CONCRETE PATH
• Convert existing 8' gravel path to an 8' concrete or asphalt path.</p> <p>29 INCLUSIVE PLAYGROUND
• Replace existing playground with inclusive play equipment. Provide ADA accessibility.</p> <p>30 RE-PAVE & RE-STRIPE SOUTHWEST PARKING LOT</p> <p>31 CONVERT EXISTING U10 SOCCER FIELD TO A U13 SOCCER FIELD</p> <p>32 SOCCER FIELD (U10)</p> <p>33 RE-PAVE & RE-STRIPE SOUTHEAST PARKING LOT</p> <p>34 INSTALL FIELD LIGHTING AT 3 LARGE SOCCER FIELDS</p> <p>35 INSTALL SMALL RESTROOM/STORAGE BUILDING</p> <p>36 NEW PARKING LOT
• ~53 STALLS</p> <p>37 PARK I.D./WAYFINDING SIGNAGE</p> |
|---|---|--|--|