

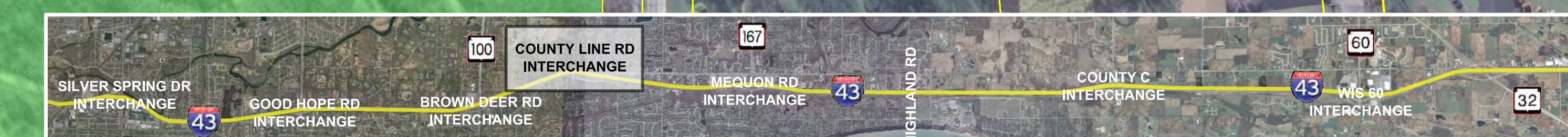
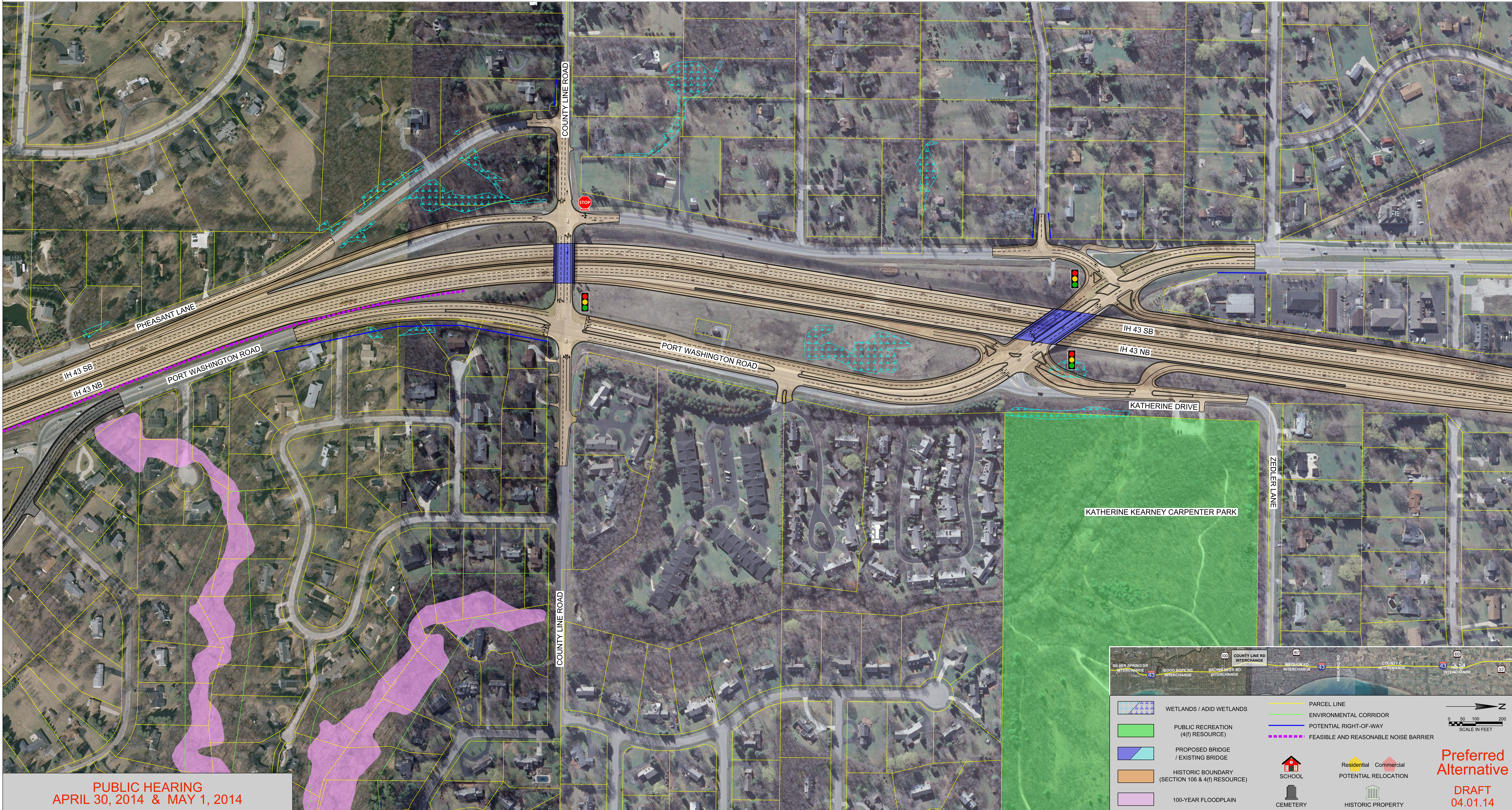


I-43 North-South Freeway Corridor Study

Project ID: 1229-04-01 | Silver Spring Dr to WIS 60 | Milwaukee and Ozaukee Counties

County Line Road Interchange

Split Diamond Hybrid (Option 1 - Without Grade Separation)



WETLANDS / ADIT WETLANDS	PARCEL LINE
PUBLIC RECREATION (4(f) RESOURCE)	ENVIRONMENTAL CORRIDOR
PROPOSED BRIDGE / EXISTING BRIDGE	POTENTIAL RIGHT-OF-WAY
HISTORIC BOUNDARY (SECTION 106 & 4(f) RESOURCE)	FEASIBLE AND REASONABLE NOISE BARRIER
100-YEAR FLOODPLAIN	SCHOOL
	POTENTIAL RELOCATION
	CEMETERY
	HISTORIC PROPERTY

SCALE IN FEET
 0 50 100 200

Preferred Alternative
DRAFT
04.01.14

PUBLIC HEARING
APRIL 30, 2014 & MAY 1, 2014