

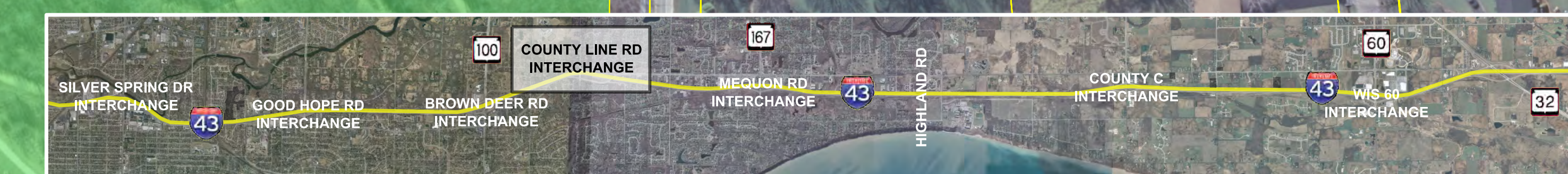
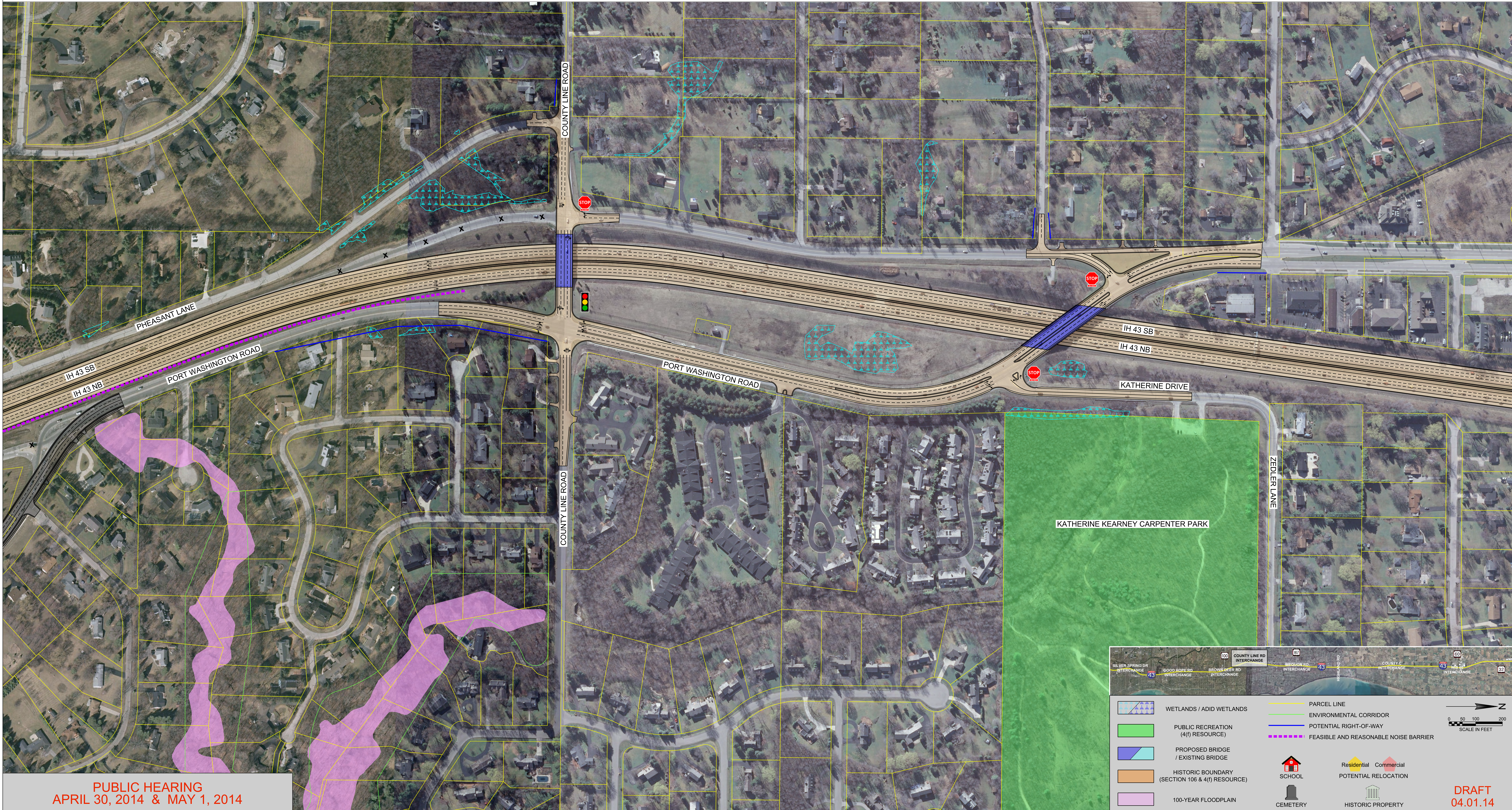


I-43 North-South Freeway Corridor Study

Project ID: 1229-04-01 | Silver Spring Dr to WIS 60 | Milwaukee and Ozaukee Counties

County Line Road Interchange

No Access



	WETLANDS / ADID WETLANDS		PARCEL LINE
	PUBLIC RECREATION (4(f) RESOURCE)		ENVIRONMENTAL CORRIDOR
	PROPOSED BRIDGE / EXISTING BRIDGE		POTENTIAL RIGHT-OF-WAY
	HISTORIC BOUNDARY (SECTION 106 & 4(f) RESOURCE)		FEASIBLE AND REASONABLE NOISE BARRIER
	100-YEAR FLOODPLAIN		SCHOOL
			CEMETERY
			Residential POTENTIAL RELOCATION
			Commercial POTENTIAL RELOCATION
			HISTORIC PROPERTY

0 50 100 200
SCALE IN FEET

DRAFT
04.01.14

PUBLIC HEARING
APRIL 30, 2014 & MAY 1, 2014