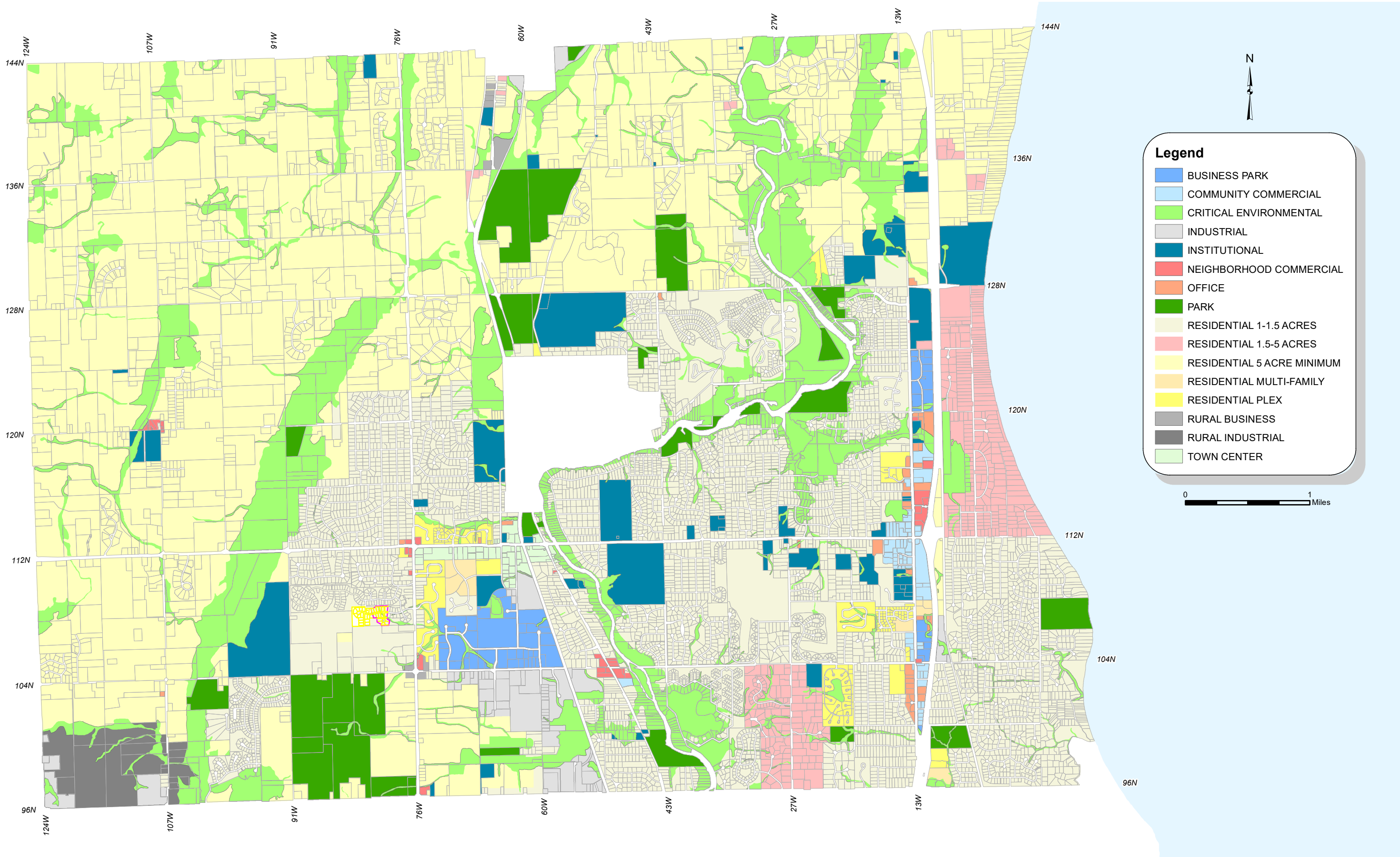


CITY OF MEQUON - LAND USE PLAN - 2035



1. PROPERTY SHALL NOT BE CLASSIFIED AS NON-CONFORMING IF ITS ZONING DESIGNATION IS DIFFERENT THAN ITS LAND USE PLAN DESIGNATION

2. THE LAND USE PLAN MAP IS A GENERAL ILLUSTRATION OF FUTURE LAND USE AND IS NOT INTENDED TO REFLECT THE DETAILS OF EXISTING DEVELOPMENT LAND USES